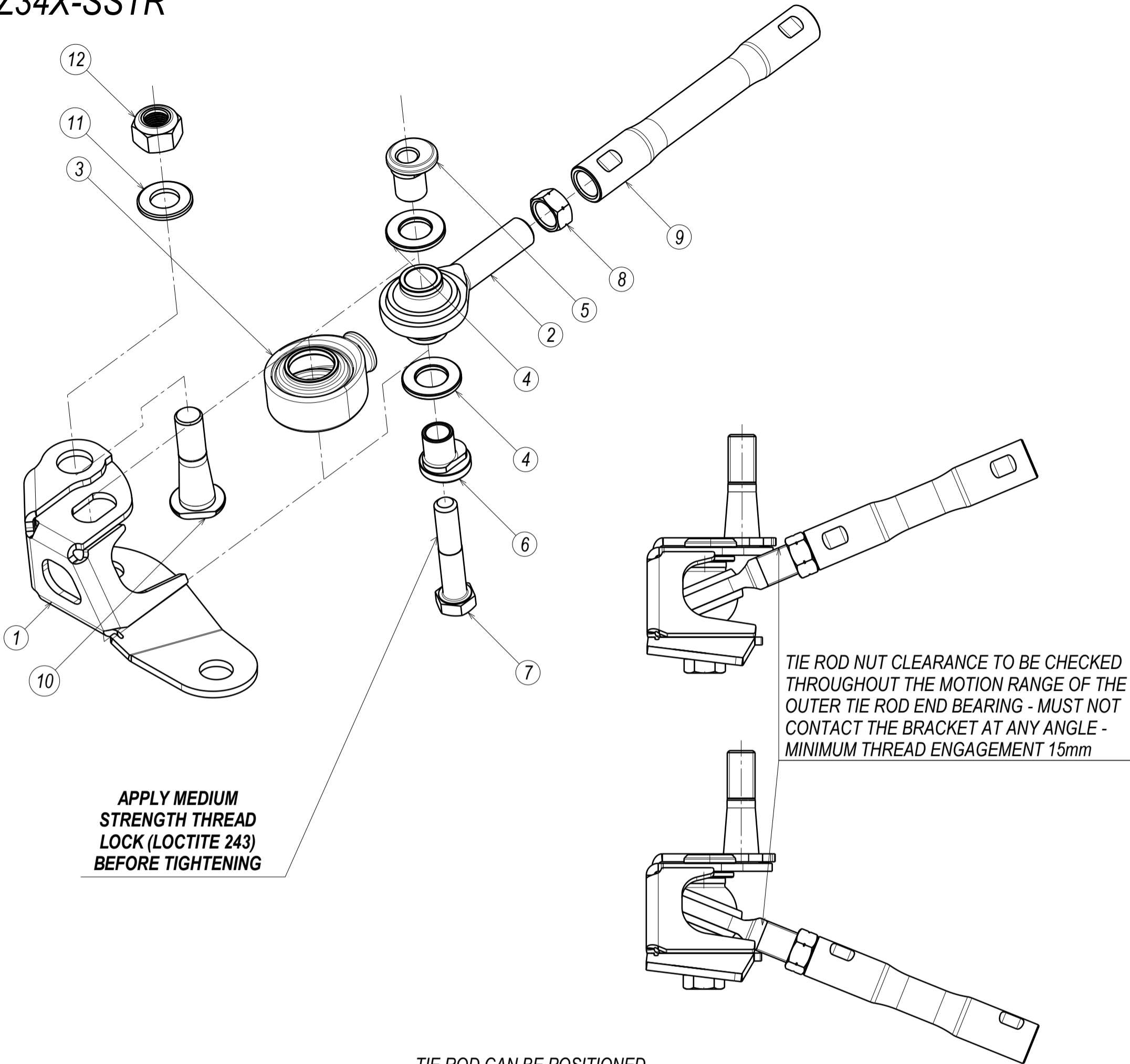


# Z34X-SSTR



**APPLY MEDIUM STRENGTH THREAD LOCK (LOCTITE 243) BEFORE TIGHTENING**

**TIE ROD NUT CLEARANCE TO BE CHECKED THROUGHOUT THE MOTION RANGE OF THE OUTER TIE ROD END BEARING - MUST NOT CONTACT THE BRACKET AT ANY ANGLE - MINIMUM THREAD ENGAGEMENT 15mm**

TIE ROD CAN BE POSITIONED MORE INSIDE OR OUTSIDE

INNER TIE ROD ADJUSTMENT IS 4 FULL TURNS TO COMPENSATE

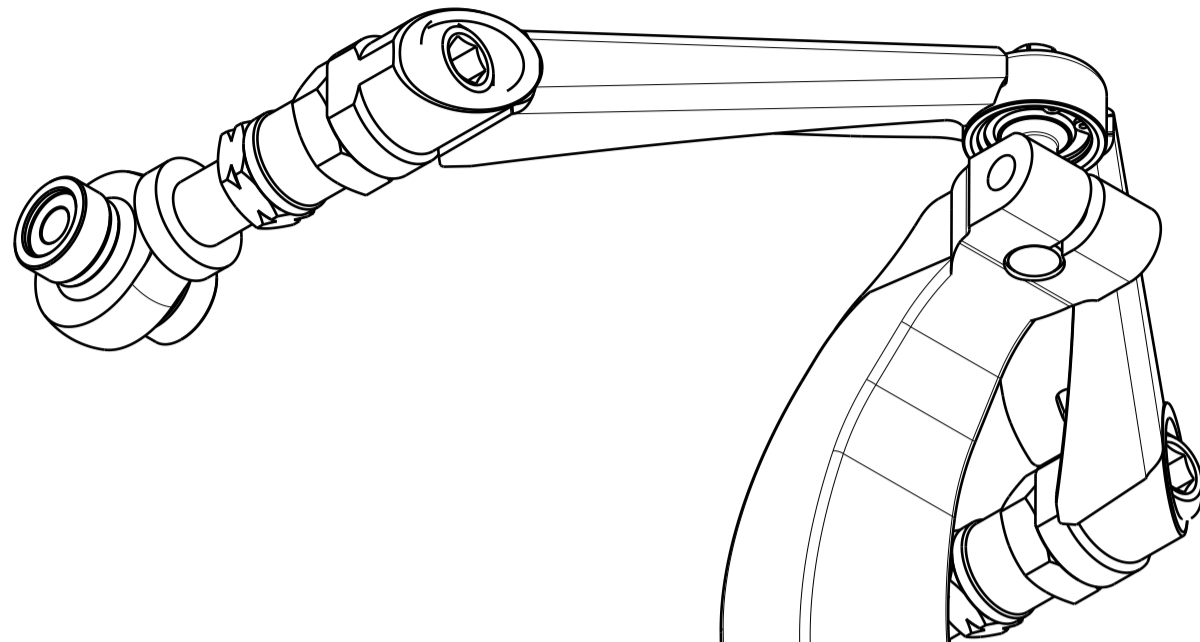
NB! TWO THREAD ADAPTERS ARE INCLUDED FOR DIFFERENT LENGTH TIE RODS. SHORTER IS USED IN CONJUNCTION WITH RACK SPACER

12	NYLON LOCKING NUT DIN 985-8 M14x1.5	1
11	ISO 7089 WASHER 14x28 STEEL GRADE A ZN	1
10	370Z STEERING BRACKET TIE ROD STUD	1
9	TIE ROD ADAPTER M14>5/8 UNF - 160mm	2
8	NUT 5/8 UNF SMALL	1
7	ISO 4014 BOLT M12x60 HEXAGON HEAD	1
6	370Z STEERING BRACKET BOTTOM SPACER	1
5	370Z STEERING BRACKET TOP SPACER	1
4	WASHER 16x30x3	2
3	PCML10T BOOT	1
2	ROD END BEARING PCYML10T L/H THREAD	1
1	370Z STEERING BRACKET-WELD ASM R/H	1
PC NO	COMPONENT NAME	QTY

OUTSIDE POSITION - LESS ACKERMANN STEERING ANGLE

INSIDE POSITION - MORE ACKERMANN STEERING ANGLE

# Z34X-SSTR



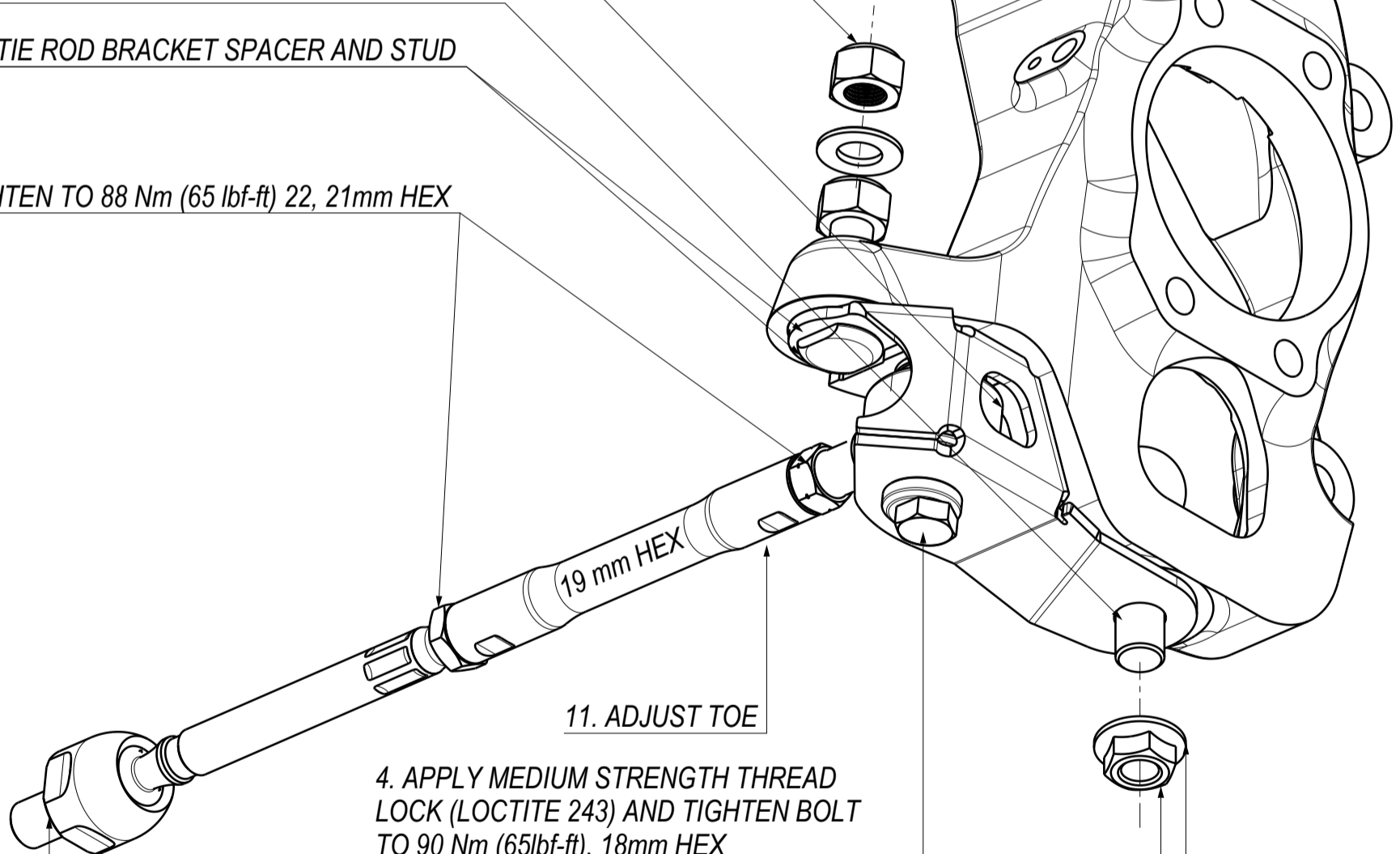
7. ADD WASHER AND TIGHTEN NUT TO 50 Nm (35 lbf-ft) 22mm HEX

3. INSTALL DUST BOOT OVER ROD END

4. INSTALL TIE ROD BRACKET TO BOTTOM A-ARM BALL JOINT, APPLY MEDIUM STRENGTH THREAD LOCK AND FINGER TIGHTEN THE NUT

5. INSTALL TIE ROD BRACKET SPACER AND STUD

12. TIGHTEN TO 88 Nm (65 lbf-ft) 22, 21mm HEX



11. ADJUST TOE

4. APPLY MEDIUM STRENGTH THREAD LOCK (LOCTITE 243) AND TIGHTEN BOLT TO 90 Nm (65lbf-ft). 18mm HEX

10. TIGHTEN TO 88 Nm (65 lbf-ft) 34mm HEX

1. REMOVE OUTER TIE ROD

2. REMOVE BOTTOM A-ARM BALL JOINT NUT (21 mm HEX)

6. TIGHTEN THE NUT TO 136Nm (100lbf-ft)