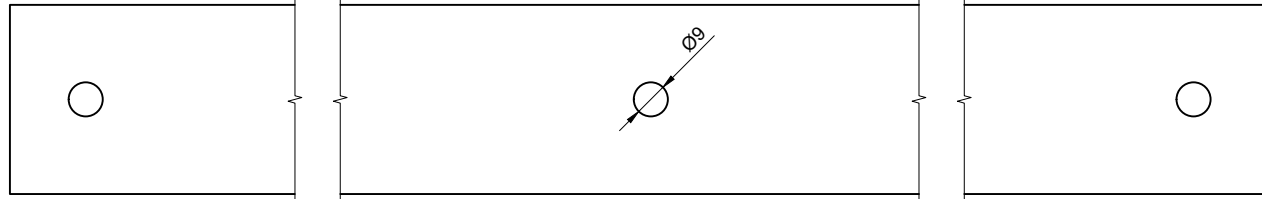


Z34X-BASH

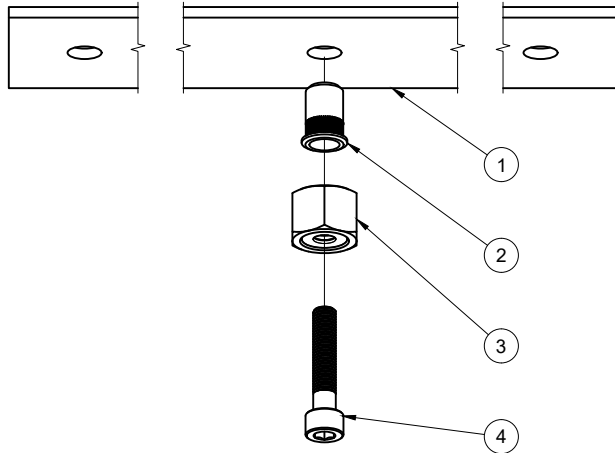
Step 1.

- Drill the 3 pre-existing OEM bash plate holes in lower rad support out to 9mm Ø



Step 2.

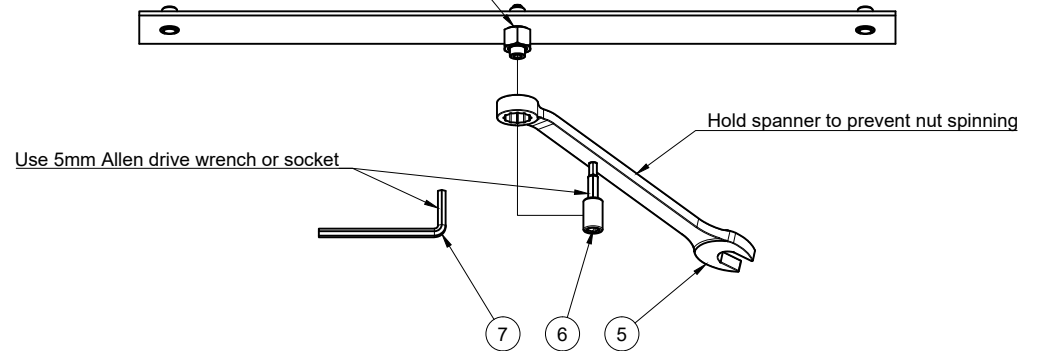
- Install components in the order shown below:



Step 3.

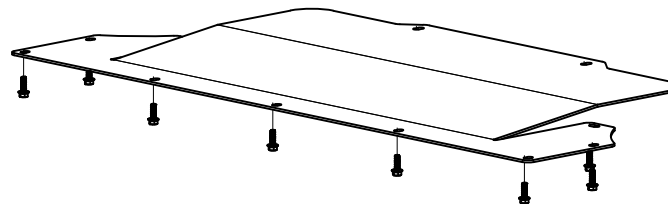
- Hold the nut using a 17mm spanner.
- Hold downward pressure to on the 5mm allen wrench/socket to prevent the rivnut from spinning.
- Begin to tighten the 5mm allen wrench/socket.
- The difficulty to tighten will remain almost constant until the rivnut is fully crimped at which point the difficulty will increase rapidly.
- Repeat for the 2 remaining holes.

Ensure that the rivnut is NOT spinning while tightening
Apply downward pressure to Allen drive prevent spinning



Step 4.

- Install bash plate using supplied 11 x M6 bolts



8	1	Component15
7	1	5mm Allen Key
6	1	5mm Allen Socket
5	1	17mm Wrench
4	1	M6 x 35
3	1	Rivnut Tool
2	3	M6 x 1.0 RIVNUT
1	1	370Z Lower Rad Support
Item	Qty	Part Name
Parts List		