



GKTech.com.au is the manufacturer of all parts sold under GKTech brand. All parts are produced overseas by standards and requirements set by GKTech engineer.

- 1) Thread adapter is Aluminium 6061-T6
- 2) Rod end used has Steel 52100 inner ball and 25CrMo4 heat treated race with PTFE lining for lubrication. Ultimate radial static load: 129Kn
- 3) The bracket is 3mm steel Q420D and calculated stress in material does not exceed 100MPa. The shape is laser cut and CNC cold formed
- 4) The bracket is welded together in a jig using GTAW welding method and meet EN ISO 13920-B for tolerances and EN ISO 5817-C for quality
- 5) All hardware is zinc coated for corrosion prevention and of 10.9 grade
- 6) Jam nut and thread/Ackermann spacers for bracket are CNC turned steel AISI 4130, the bump steer adjustment washers are steel C30

Design process involves calculating loads at different suspension mounting points during cornering and braking scenarios and applying them to design models using Finite Element Analyses and the topology is optimised to meet minimum 4x safety margin for material stress.

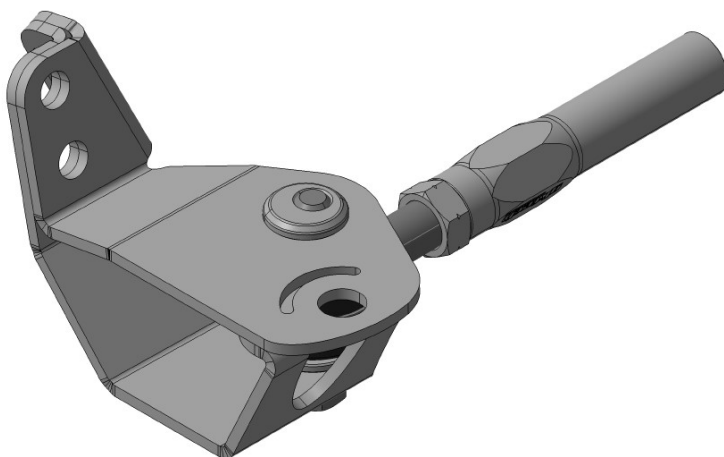


Figure 1. GKtech 350Z steering bracket