

Z33X-PUMT

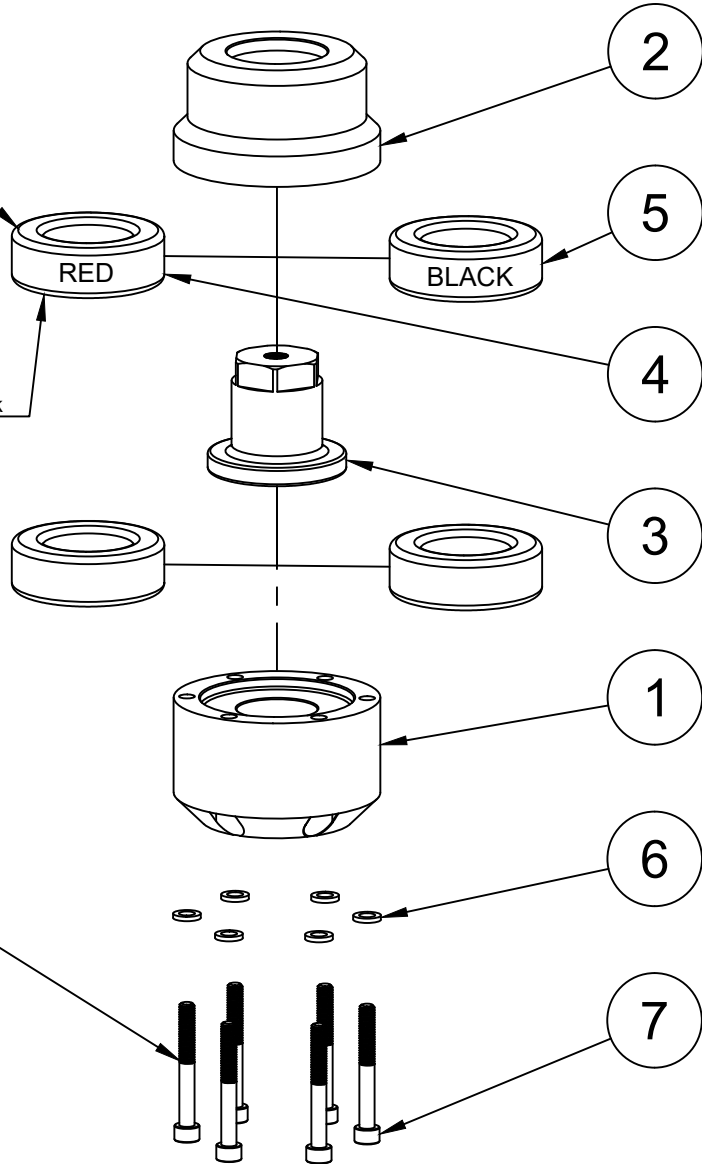
1/2

Step 1. Grease bushings prior to installation

Step 2. Install desired bushing
 Red = Soft = 70ShA
 Black = Hard = 80ShA
 Mount comes pre-installed with Black

Step 3. Install all components in order shown and finger tighten bolts
Ensure bushings are correctly seated within the two halves

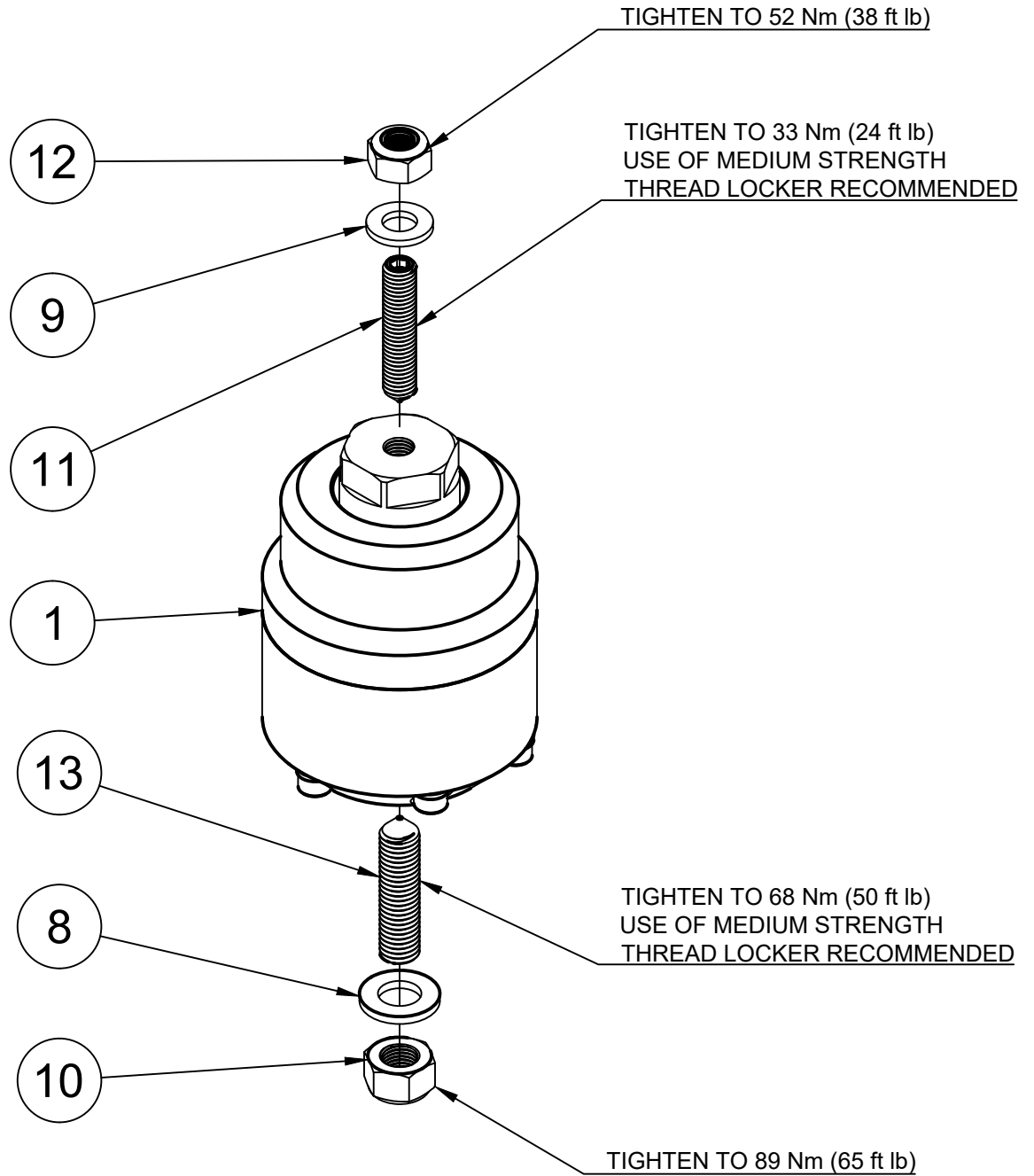
Step 4. Torque bolts to 11 Nm (8 ft lb)
**USE MEDIUM STRENGTH
 THREAD LOCKER (LOCTITE 243)**



7	6	M6 x 1.0 x 50 Bolt	Steel
6	6	M6 Washer	Steel
5	2	RED Bushing Soft	Polyurethane ShA70
4	2	BLACK Bushing Hard	Polyurethane ShA80
3	1	350 Upper Body	Aluminium 6061-T6
2	1	350 Top Cap	Aluminium 6061-T6
1	1	350 Lower Body	Aluminium 6061-T6
Item	Qty	Description	Material
Parts List			

Z33X-PUMT

2/2



7	1	M12 x 1.75 NYLOCK NUT
6	1	M12 WASHER
5	1	M12 x 1.75 x 50 STUD
4	1	M10 x 1.5 NYLOCK NUT
3	1	M10 WASHER
2	1	M10 x 1.5 x 50 STUD
1	1	350Z PU ENGINE MOUNT
Item	Qty	Part Name
Part List		

gktech
.com