

Z33X-2BLB

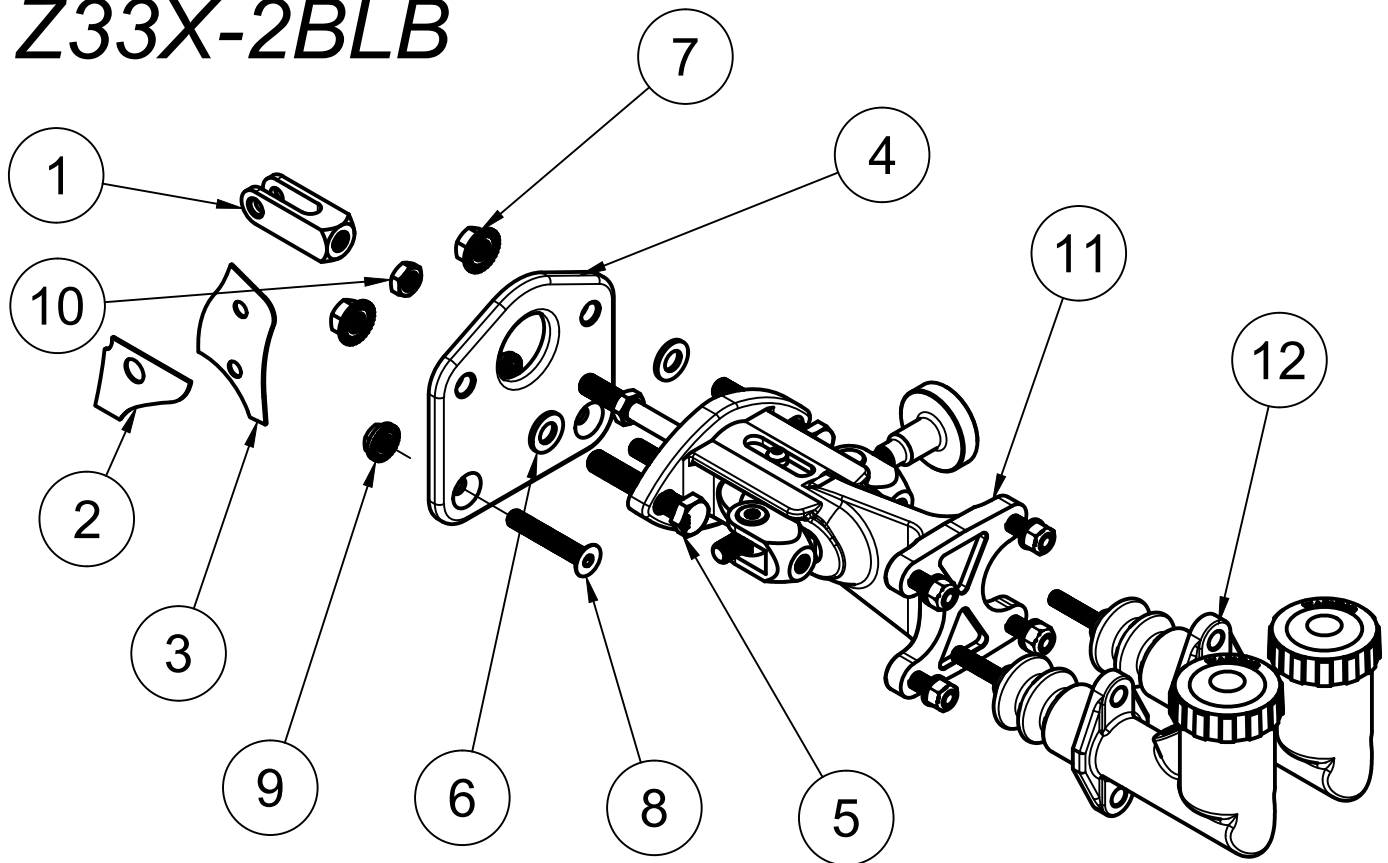


DIAGRAM A

1. REMOVE THE BRAKE PEDAL ASSEMBLY (4 NUTS AND 1 BOLT) AND BRAKE BOOSTER ASSEMBLY (2 BRAKE LINES, 1 VACUUM LINE) FROM THE VEHICLE.
2. IN THE ENGINE BAY, TEST FIT THE ADAPTER PLATE TO THE FIREWALL.

MARK AND TRIM THE FIREWALL, AND ALSO DRILL THE UPPER 2 HOLES AS SHOWN IN DIAGRAM B.

TRIM THIS SECTION OF FIREWALL TO MATCH ADAPTER PLATE HOLE.

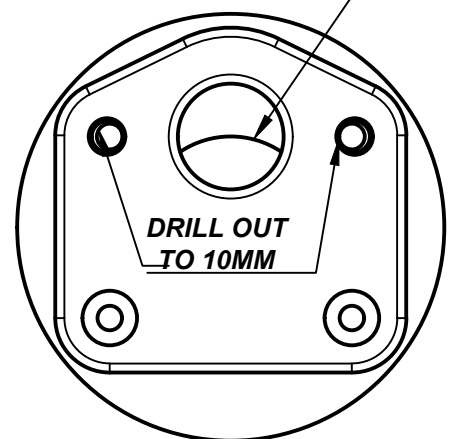


DIAGRAM B

12	FLUX RESERVOIR MASTER CYLINDERS	2
11	WILWOOD TANDEM MOUNT BALANCE BAR	1
10	3/8 THIN NUT	1
9	M8 FLANGE LOCK NUT	2
8	M8 x 50 COUNTERSUNK BOLT	2
7	M10 FLANGE LOCK NUT	2
6	M10 WASHER	2
5	M10 x 60 BOLT	2
4	HORIZONTAL ADAPTER PLATE	1
3	PEDAL RATIO HOLE TEMPLATE	1
2	CLEARANCE HOLE TEMPLATE	1
1	ADJUSTED PEDAL RATIO CLEVIS	1
ITEM:	DESCRIPTION:	QTY:
PARTS LIST:		

Z33X-2BLB

ADJUSTED PEDAL
RATIO HOLE



DIAGRAM C



DIAGRAM D

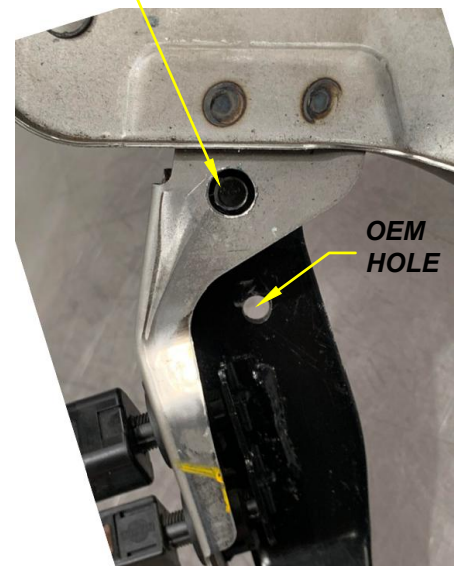


DIAGRAM E

3. ALIGN THE CLEARANCE HOLE TEMPLATE ON TO THE FLAT SECTION OF THE BRAKE PEDAL WHICH THE BRAKE SENSORS MOUNT TO (DIAGRAM C). MARK, PUNCH AND DRILL A 12MM CLEARANCE HOLE.

CRITICAL!! DIAGRAMS AND TEMPLATES WILL BE FLIPPED FOR LHD. ENSURE YOU ARE USING THE CORRECT TEMPLATE.

4. NEXT, USE THE PEDAL RATIO ADJUSTMENT TEMPLATE TO MARK THE NEW HOLE IN THE BRAKE PEDAL (DIAGRAM D). WORKING THROUGH THE CLEARANCE HOLE, MARK, PUNCH AND DRILL A NEW 8MM HOLE.

CRITICAL!! DO NOT LET THE HOLE DIAMETER EXCEED 8MM. THIS WILL CAUSE SLOP IN THE BRAKE PEDAL.

5. TEST THE ASSEMBLY ON THE BENCH. INSERT THE M10 BOLT AND WASHER THROUGH THE WILWOOD ASSEMBLY, UPPER HOLES OF ADAPTER PLATE AND PEDAL. THREAD THE MASTER CYLINDERS ON TO THE BALANCE BAR CLEVISES AND USE NYLOCS TO LOCK MASTER CYLINDERS IN PLACE. THREAD ON FLANGE NUTS TO BOLT ASSEMBLY TO THE PEDAL. INSTALL PEDAL CLEVIS TO NEW HOLE, ADJUST TO SUIT, THEN LOCK JAM NUT.

CRITICAL!! CONFIRM PEDAL IS FULLY RETURNING AND MAKE ANY ADJUSTMENTS BEFORE PROCEEDING.

6. WHILE ASSEMBLED ON THE BENCH, BLEED BOTH MASTER CYLINDERS, THEN REMOVE BRAKE PEDAL FOR VEHICLE INSTALLATION.
7. WHILE HOLDING THE BRAKE PEDAL IN POSITION IN THE FOOTWELL, GET SOMEONE TO INSERT THE BALANCE BAR ASSEMBLY FROM THE ENGINE BAY.

INSERT THE OEM CLEVIS PIN THROUGH THE CLEARANCE HOLE AND INSTALL CLIP. THEN TIGHTEN BRAKE PEDAL NUTS AND BOLT.

8. ATTACH BRAKE LINES AND BLEED THE BRAKES. MAKE ANY FINE ADJUSTMENTS USING THE MASTER CYLINDER SHAFTS TO TAKE UP ANY SLACK.