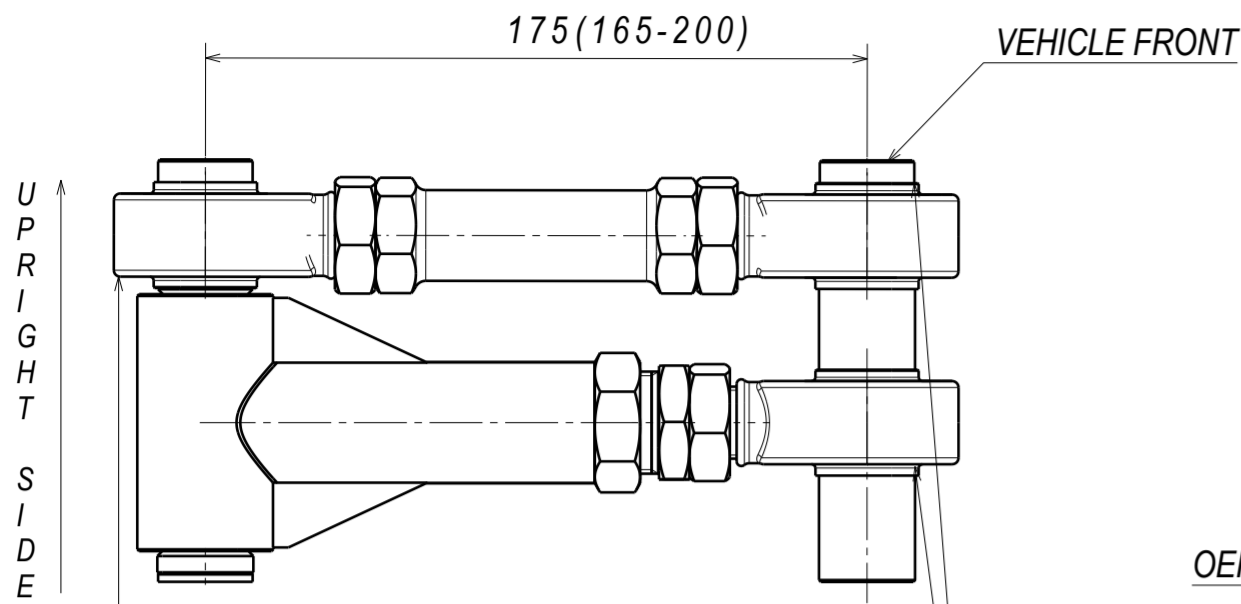
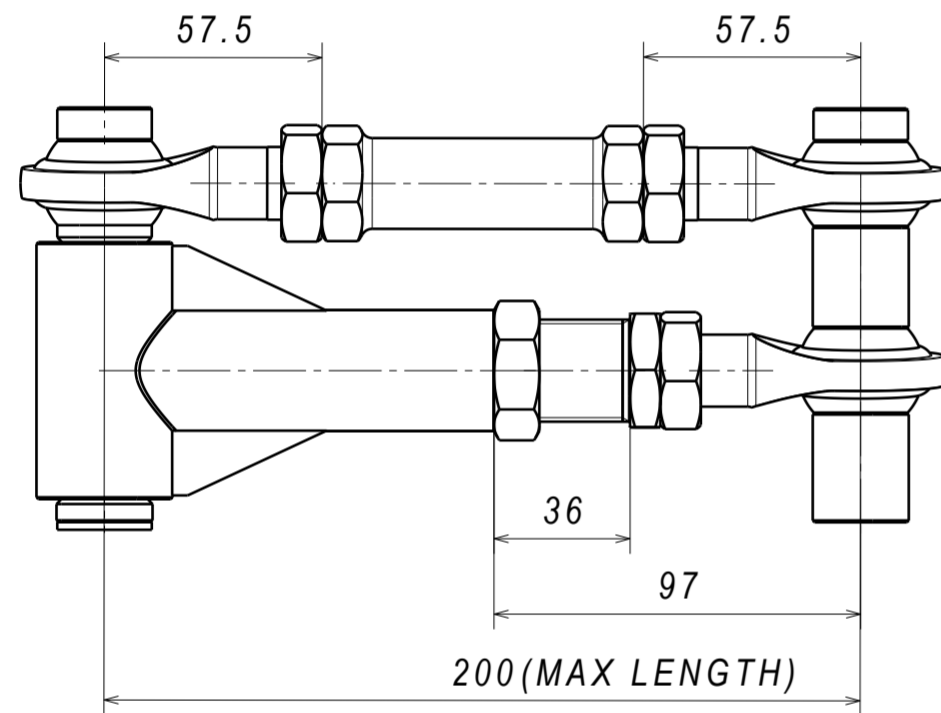


Z32X-FUCA

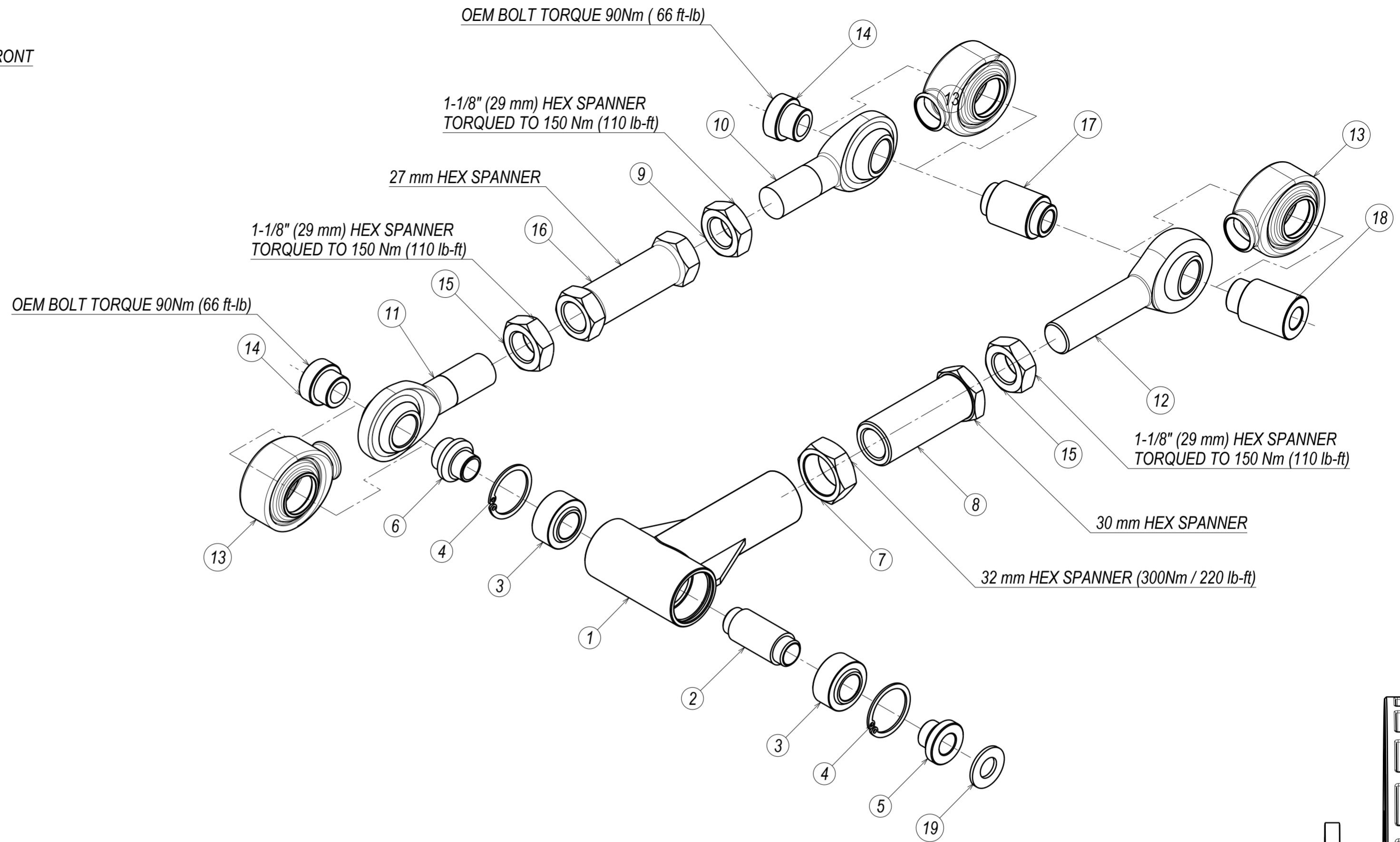


CRITICAL!

CHECK FOR ROD END BEARING ALIGNMENT
AFTER TIGHTENING THE ADJUSTING MECHANISM
ROD END TO BE PERPENDICULAR TO THE SPACERS



ROD ENDS TO HAVE MINIMUM OF 15mm THREAD ENGAGEMENT,
27mm FOR ADJUSTER (NOT INCLUDING JAM NUTS)



19	Z32 FRONT UPPER ARM WASHER	1
18	Z32 FUCA PCML12T ROD END SPACER	1
17	Z32 FRONT UPPER ARM LONG SPACER	1
16	Z32 FRONT UPPER ARM TURNBUCKLE	1
15	3/4-16 ASTM A563 GRADE A JAM NUT, LH THREAD	2
14	ZR32 FUCA PCML12T ROD END SPACER	2
13	QA1 PCML12T BOOT REV2	3
12	ROD END PCML12TE	1
11	ROD END PCMR12T	1
10	ROD END PCML12T	1
9	3/4-16 ASTM A563 GRADE A JAM NUT, RH THREAD	1
8	R32 FUCA VERNIER SLEEVE	1
7	FLCA M27 JAM NUT	1
6	PCML12T-COM10T OFFSET SPACER	1
5	OFFSET SPACER FOR COM10T	1
4	CIRCLIP DIN 472 BORE 32mm	2
3	SPHERICAL BEARING ASM - QA1 COM10T	2
2	Z32 FRONT UPPER ARM COM10T OFFSET SPCR	1
1	Z32 FRONT UPPER ARM WELDING ASSEMBLY	1
PC NO	COMPONENT NAME	QTY

