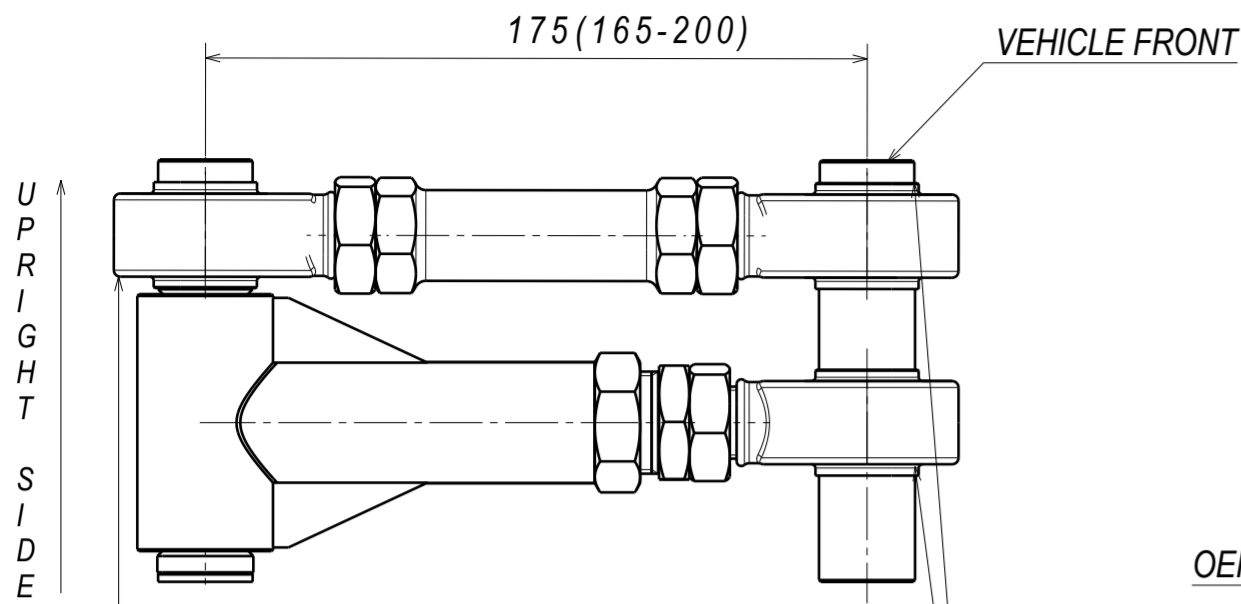
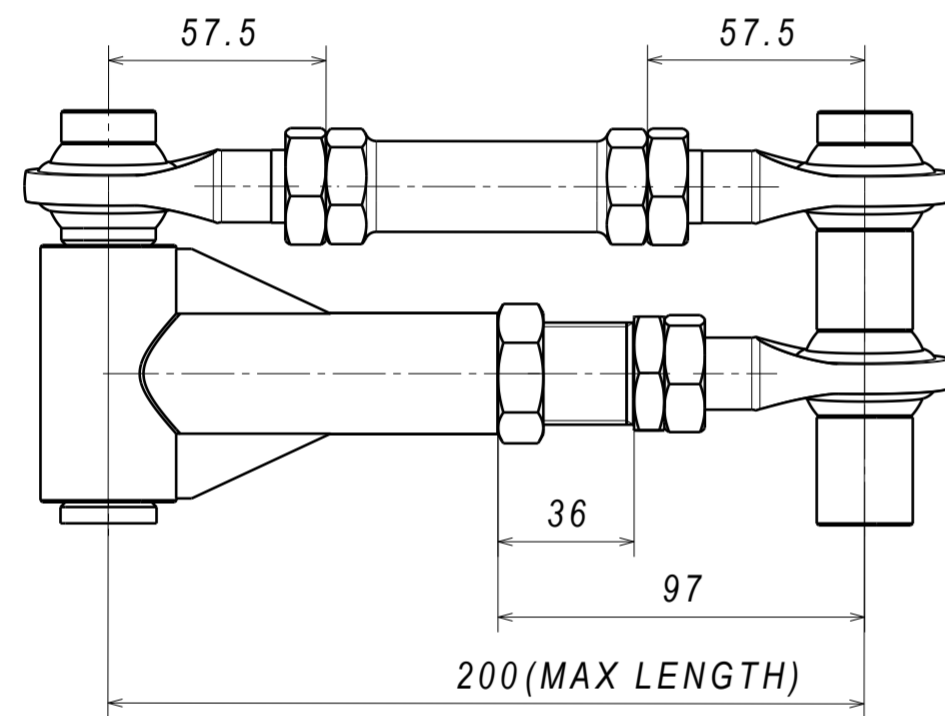


# Z32X-FUCA

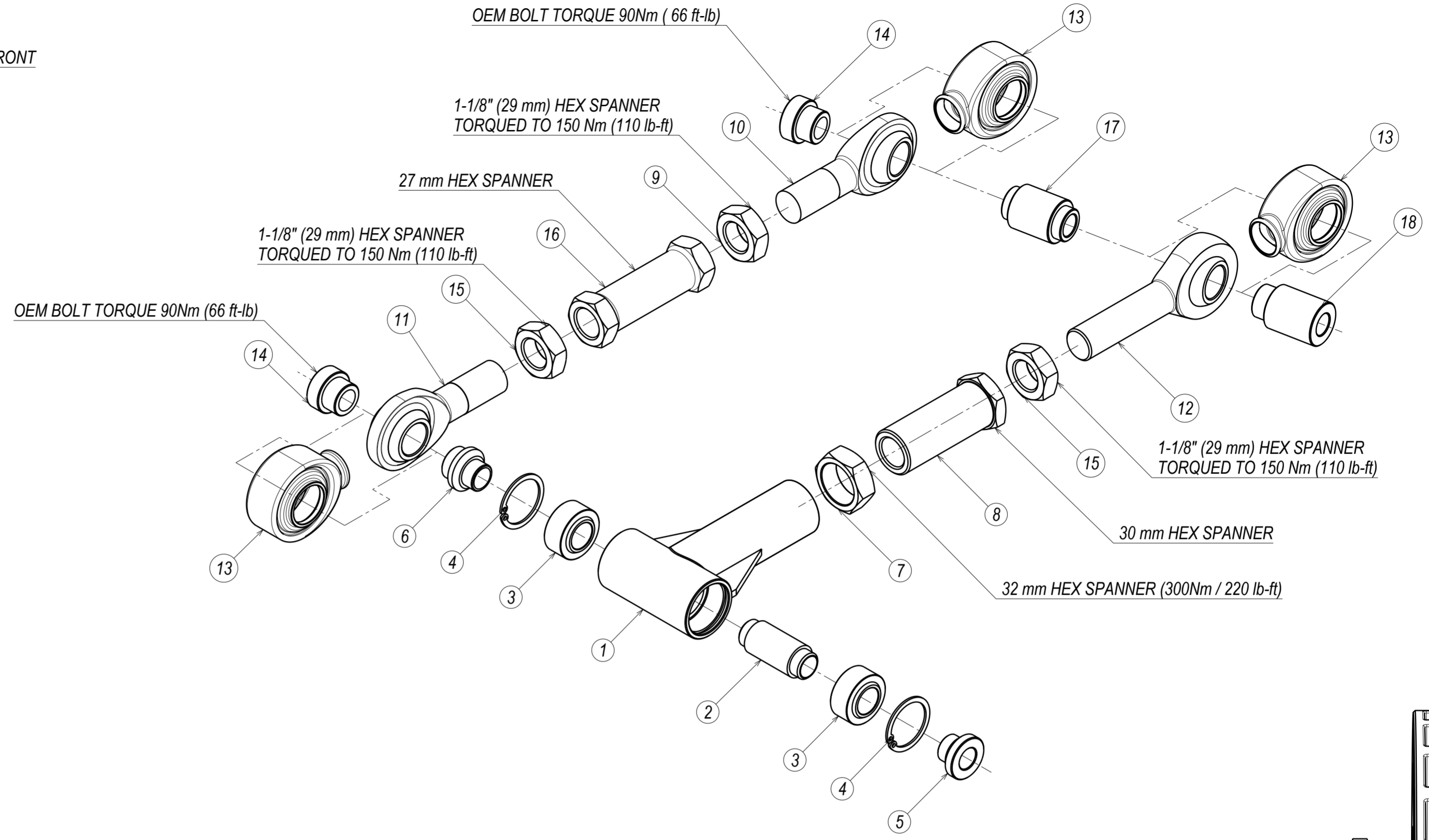


**CRITICAL!**

CHECK FOR ROD END BEARING ALIGNMENT  
AFTER TIGHTENING THE ADJUSTING MECHANISM  
ROD END TO BE PERPENDICULAR TO THE SPACERS



ROD ENDS TO HAVE MINIMUM OF 15mm THREAD ENGAGEMENT,  
27mm FOR ADJUSTER (NOT INCLUDING JAM NUTS)



18	Z32 FUCA PCML12T ROD END SPACER	1
17	Z32 FRONT UPPER ARM LONG SPACER	1
16	Z32 FRONT UPPER ARM TURNBUCKLE	1
15	3/4-16 ASTM A563 GRADE A JAM NUT, LH THREAD	2
14	ZR32 FUCA PCML12T ROD END SPACER	2
13	PCMX12T BOOT	3
12	ROD END PCML12TE	1
11	ROD END PCMR12T	1
10	ROD END PCML12T	1
9	3/4-16 ASTM A563 GRADE A JAM NUT, RH THREAD	1
8	R32 FUCA VERNIER SLEEVE	1
7	FLCA M27 JAM NUT	1
6	PCML12T-COM10T OFFSET SPACER	1
5	OFFSET SPACER FOR COM10T	1
4	CIRCLIP DIN 472 BORE 32mm	2
3	SPHERICAL BEARING ASM - COM10T	2
2	Z32 FRONT UPPER ARM COM10T OFFSET SPCR	1
1	Z32 FRONT UPPER ARM WELDING ASSEMBLY	1
PC NO	COMPONENT NAME	QTY

