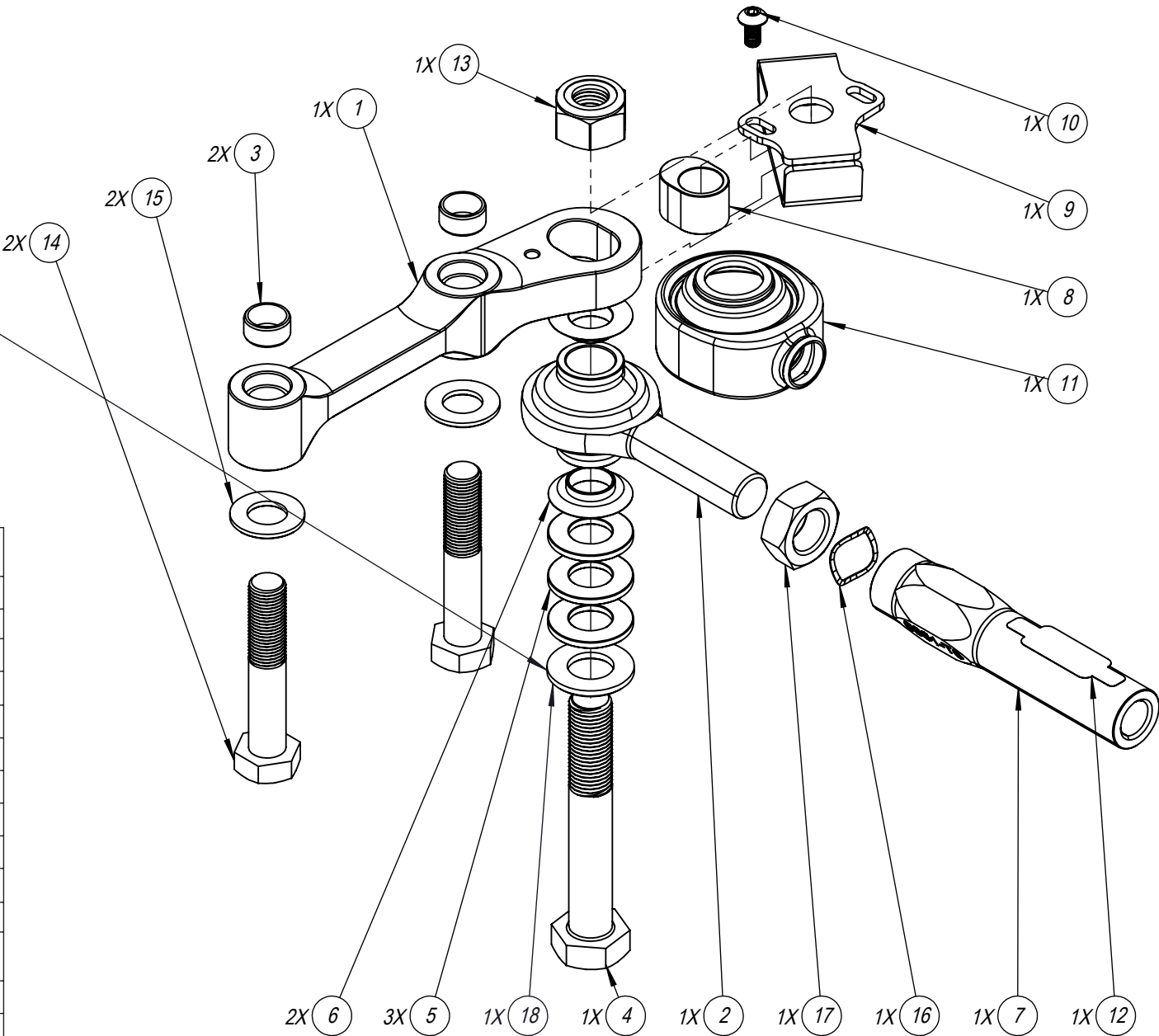
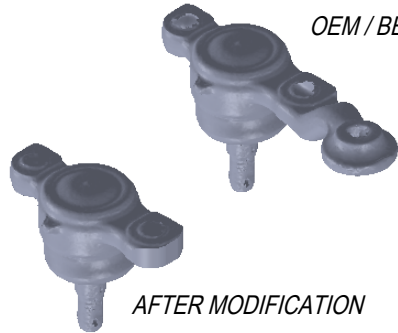


**CRITICAL !!!**  
**WASHER MUST BE USED UNDERNEATH**  
**BOLT HEAD UNDER ALL CONFIGURATIONS**

ITEM NO.	DESCRIPTION	QTY.
1	XE10 Knuckle Adapter Body RH	1
2	GK ROD END - PCYML10TS	1
3	XE10 Knuckle Adapter Locator	2
4	DIN961 M14x1.5x90 Grade 10.9	1
5	2.5MM Bump Steer Washer	3
6	2.5MM PCY10TS Spacer	2
7	Thread Adapter M14x1.5 - 110mm	1
8	XE10 Knuckle Adapter Ackerman Adjuster	1
9	Lockstop Weld ASM RH	1
10	ISO 7380 M5x0.8x10	1
11	PCY10TS BOOT	1
12	MINIMUM 15MM THREAD ENGAGEMENT REQUIRED	1
13	DIN 985 M14x1.5 Nylon Locknut	1
14	DIN980 M12x1.25x65 Grade 10.9	2
15	DIN 125 M12X24X2 Washer	2
16	21MM WAVE WASHER	1
17	HEAVY HEX JAM NUT 0.381 GRADE 8 2B	1
18	DIN 6916, M14 WASHER	1



## 1. REMOVE OEM TIE ROD PICKUP ENSURE TO RETAIN KNUCKLE MOUNTING HOLES



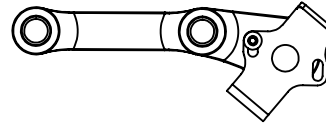
OEM / BEFORE MODIFICATION

AFTER MODIFICATION

## 3. SET UP LOCK STOP BASED ON SETUP AND CLEARANCE

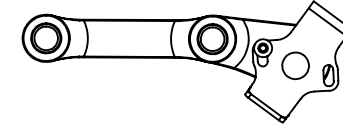
ENSURE TO CHECK THAT ROD END IS NOT MAKING CONTACT

LOCKSTOP OUTER POSITION - MINIMUM LOCK

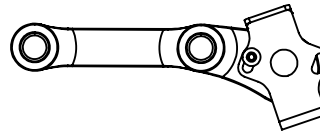


LOCKSTOP INNER POSITION - MAXIMUM LOCK

\* REQUIRES SWAY BAR END LINK REMOVAL FOR CLEARANCE



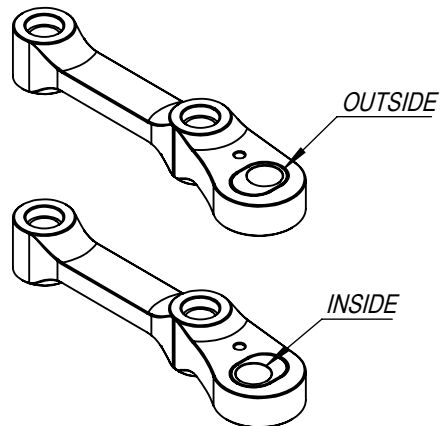
SWITCH L/H AND R/H LOCKSTOPS - FOR +25MM LCAs



## 2. CHOOSE BETWEEN ACKERMANN SETTINGS

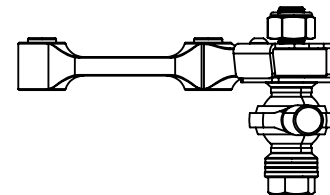
**OUTSIDE** - PRO ACKERMANN, MORE PARALLEL STEERING + MORE LOCK  
**INSIDE** - LESS ACKERMANN, CLOSER TO OEM + LESS LOCK

**WHEN CHANGING ACKERMANN** - LOOSEN TIE ROD LOCK NUT AND TURN TIE ROD 4 FULL TURNS (6mm) TO RETAIN TOE SETTING

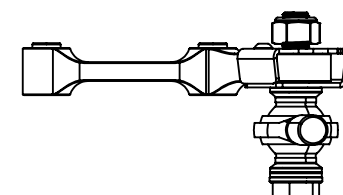


## 4. SET UP BUMP STEER SPACERS, THESE SPACERS CAN BE MOVED ABOVE THE BEARING TO REDUCE BUMP STEER EFFECTS

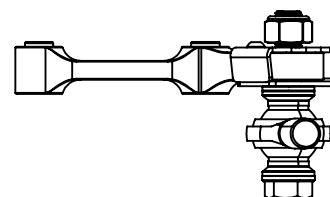
OEM HEIGHT - SPACERS BELOW



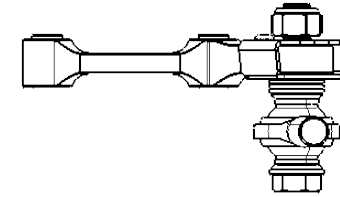
-25MM HEIGHT - ONE SPACER ABOVE



-50MM HEIGHT - TWO SPACERS ABOVE



-75MM HEIGHT - THREE SPACERS ABOVE



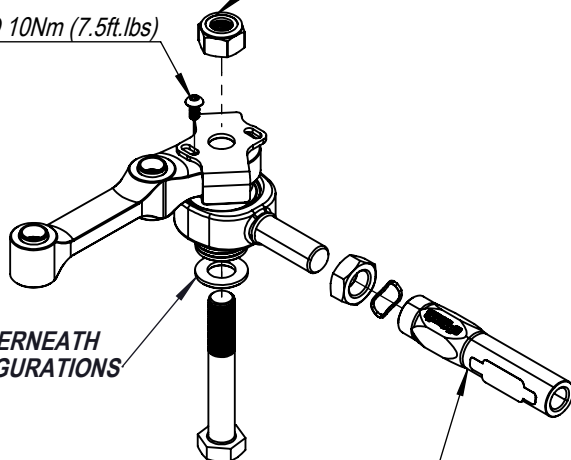
## 5. INSTALL HARDWARE TO ADAPTER

TIGHTEN AND TORQUE TO 10Nm (7.5ft.lbs)

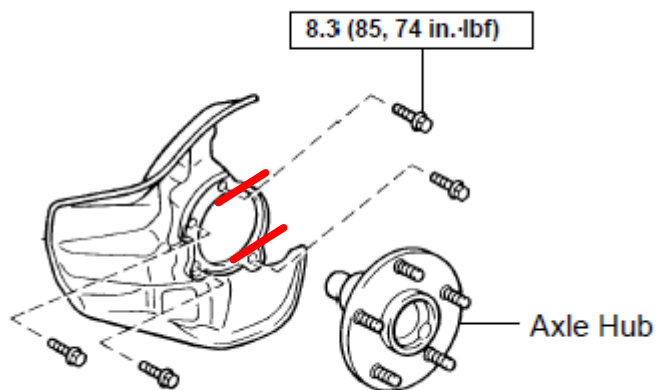
**CRITICAL !!!**  
WASHER MUST BE USED UNDERNEATH  
BOLT HEAD UNDER ALL CONFIGURATIONS

ENSURE 15mm THREAD ENGAGEMENT BOTH SIDES

TIGHTEN AND TORQUE TO 125Nm (92ft.lbs)



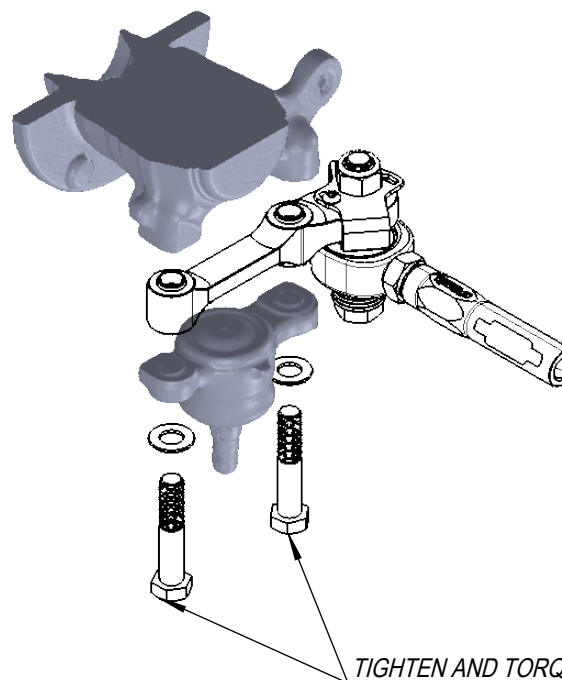
**\*\* OEM DUST SHIELD MUST BE REMOVED OR TRIMMED TO SUIT  
REMOVE BY CUTTING ALONG LINES BELOW**



**8.3 (85, 74 in.-lbf)**

Axle Hub

## 6. INSTALL ADAPTER TO OEM KNUCKLE



TIGHTEN AND TORQUE TO 113Nm (83ft.lbs)