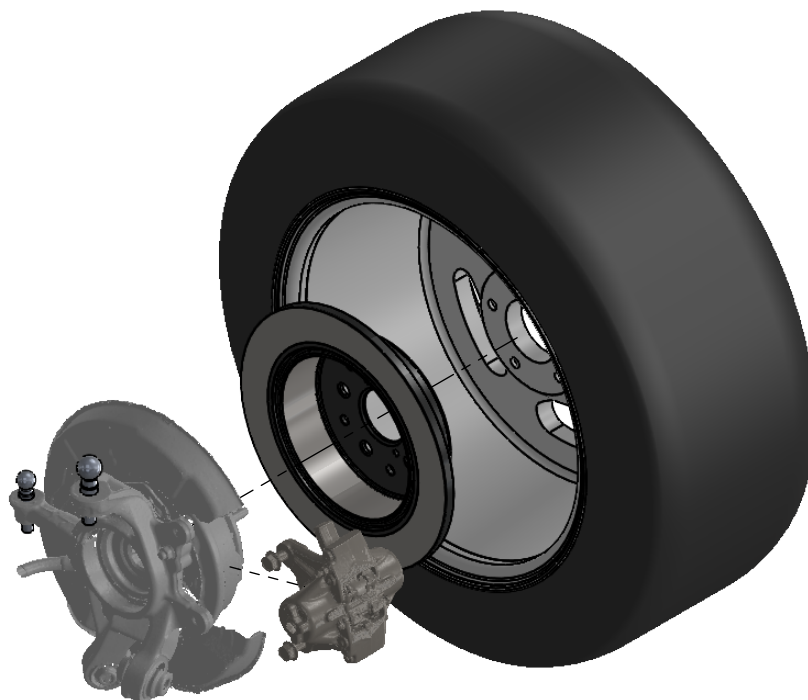


**DIAGRAM A**

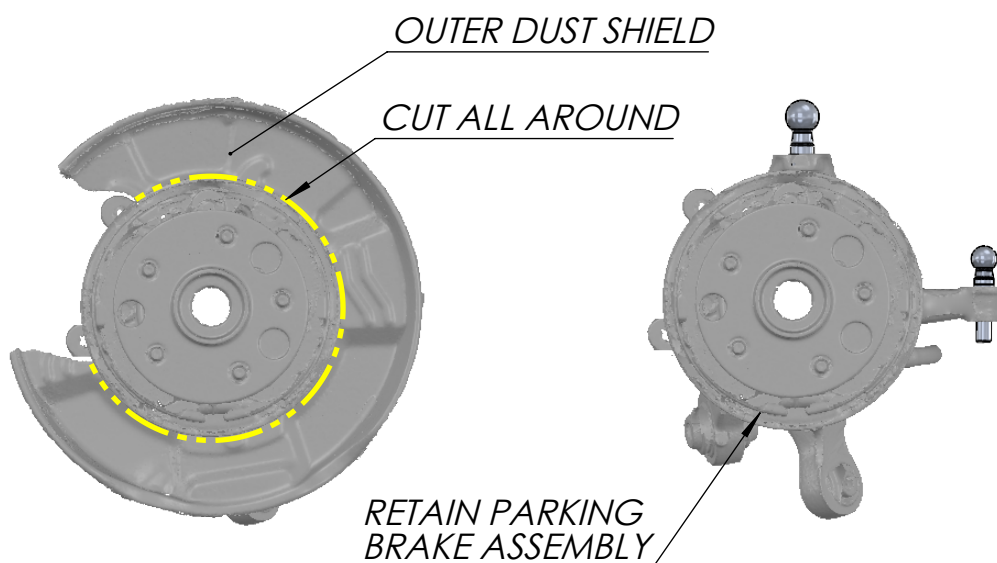
ITEM NO.	PART NUMBER:	QTY:
1	RH DUAL CALIPER BRACKET	1
2	LH DUAL CALIPER BRACKET	1
3	M10X1.25 SERRATED FLANGE NUT	4
4	M10X1.5X40 BHCS	4
5	M12X24X2 WASHER	2
6	M12X1.25X35 HEX	2
7	M10X1.5 SERRATED FLANGE NUT	4
8	M10X20X2.2 WASHER	2

1. *LIFT VEHICLE AND REMOVE THE REAR WHEELS, CALIPERS AND BRAKE ROTORS.*



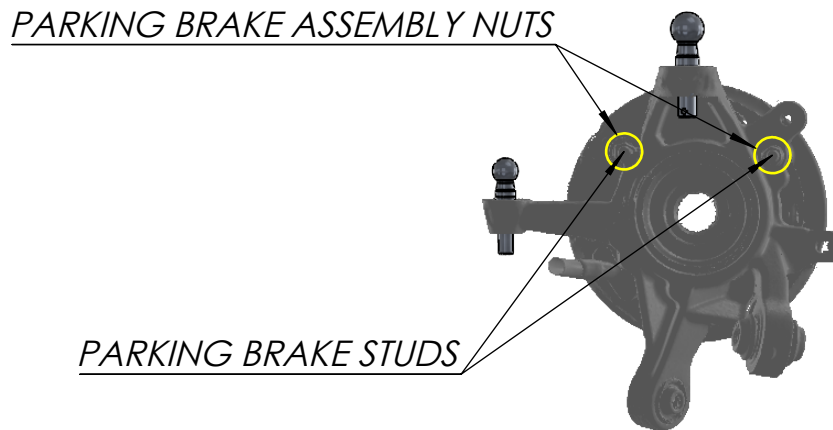
**DIAGRAM B**

2. *USING A GRINDER, CUT AND REMOVE THE OUTER DUST SHIELD. THE INNER DUST SHIELD IS ESSENTIAL FOR PARKING BRAKE OPERATION SO MUST BE RETAINED.*



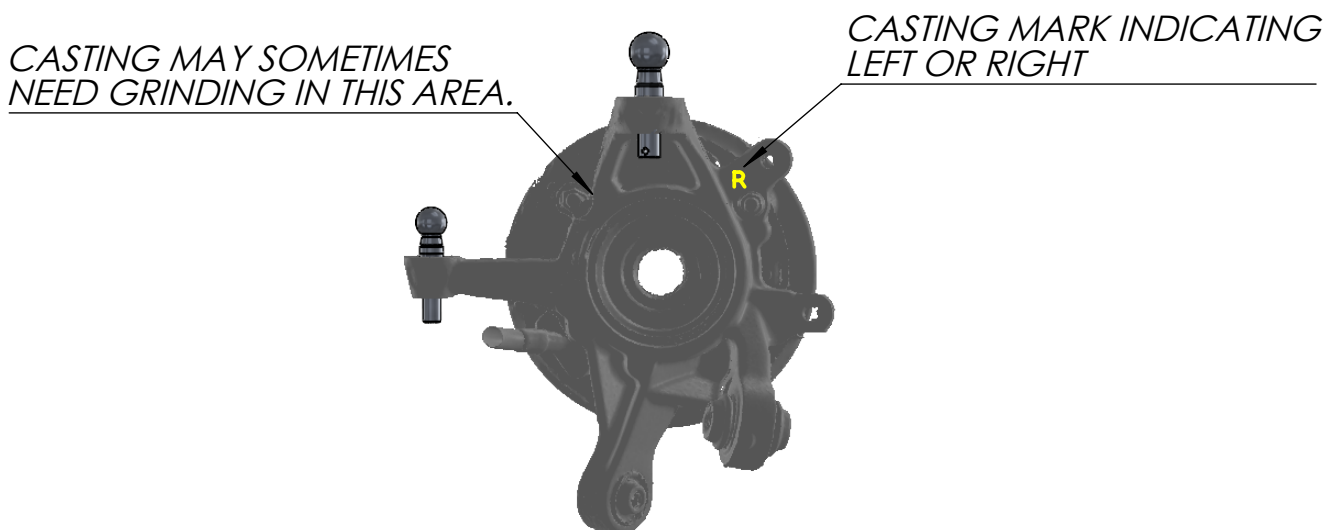
**DIAGRAM C**

3. REMOVE THE PARKING BRAKE ASSEMBLY NUTS FROM THE BACK OF THE UPRIGHT. THE 2 PARKING BRAKE STUDS WILL REMAIN.



**DIAGRAM D**

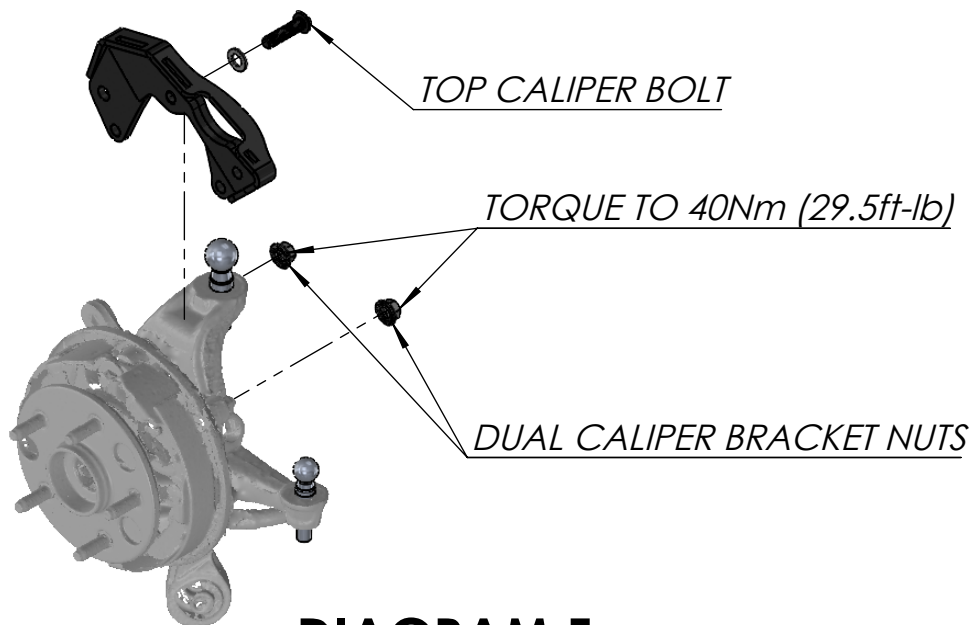
4. USE A DREMEL, OR FILE TO REMOVE THE CASTING MARKS IN THIS AREA. THIS IS REQUIRED TO ENSURE THE BRACKET SITS FLUSH ON TO THE UPRIGHT.



**DIAGRAM E**

5. TO INSTALL THE DUAL CALIPER BRACKET, FIRST ENSURE THE TOP CALIPER BOLT IS SITTING IN THE BRACKET. THEN, SLIDE THE DUAL CALIPER BRACKET ON TO THE PARKING BRAKE STUDS.

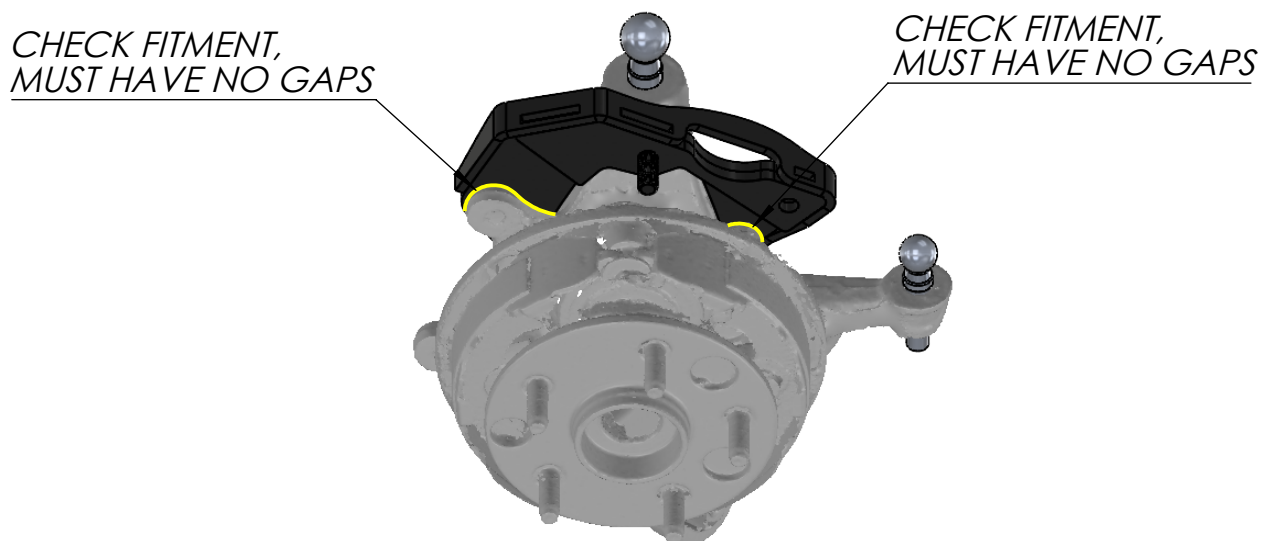
(NOTE: FOR EASIEST FITMENT, ROTATE THE BRACKET ONTO BOTH STUDS SIMULTANEOUSLY)



**DIAGRAM F**

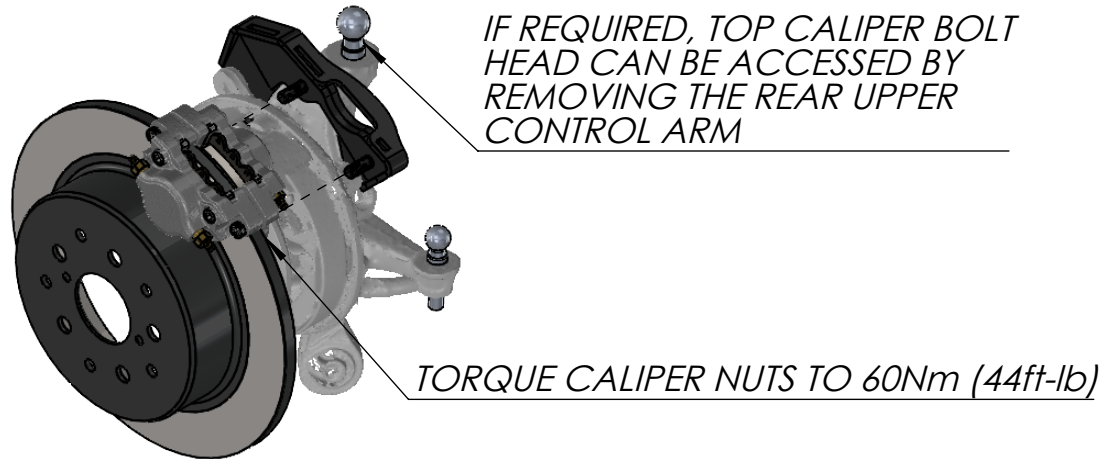
6. CHECK FOR CORRECT FITMENT IN THE LOCATIONS HIGHLIGHTED IN DIAGRAM F. THERE SHOULD BE NO GAPS BETWEEN UPRIGHT AND DUAL CALIPER BRACKET.

IF FITMENT IS NOT FLUSH, REPEAT STEPS 4-6.



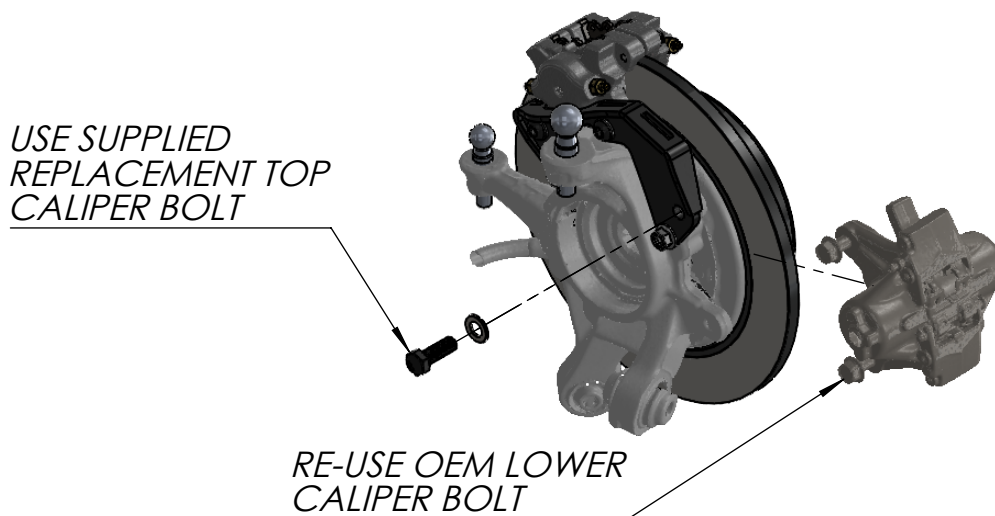
**DIAGRAM G**

7. THE CALIPER AND ROTOR MUST BE INSTALLED AT THE SAME TIME. SLIDE THE ROTOR AND CALIPER ON TO THE HUB FLANGE TOGETHER, MAKING SURE TO INSTALL THE CALIPER NUTS BETWEEN THE CALIPER EAR AND THE BRAKE ROTOR.



## **DIAGRAM H**

8. REINSTALL THE OEM CALIPER USING THE SUPPLIED LONGER REPLACEMENT BOLT FOR THE TOP HOLE.



## **DIAGRAM I**

9. REPEAT STEPS 2-8 FOR THE OTHER SIDE OF THE VEHICLE.
10. INSTALL BRAKE LINES FOR SECONDARY CALIPERS AND BLEED THE LINES.
11. FIT WHEELS AND LOWER THE CAR.