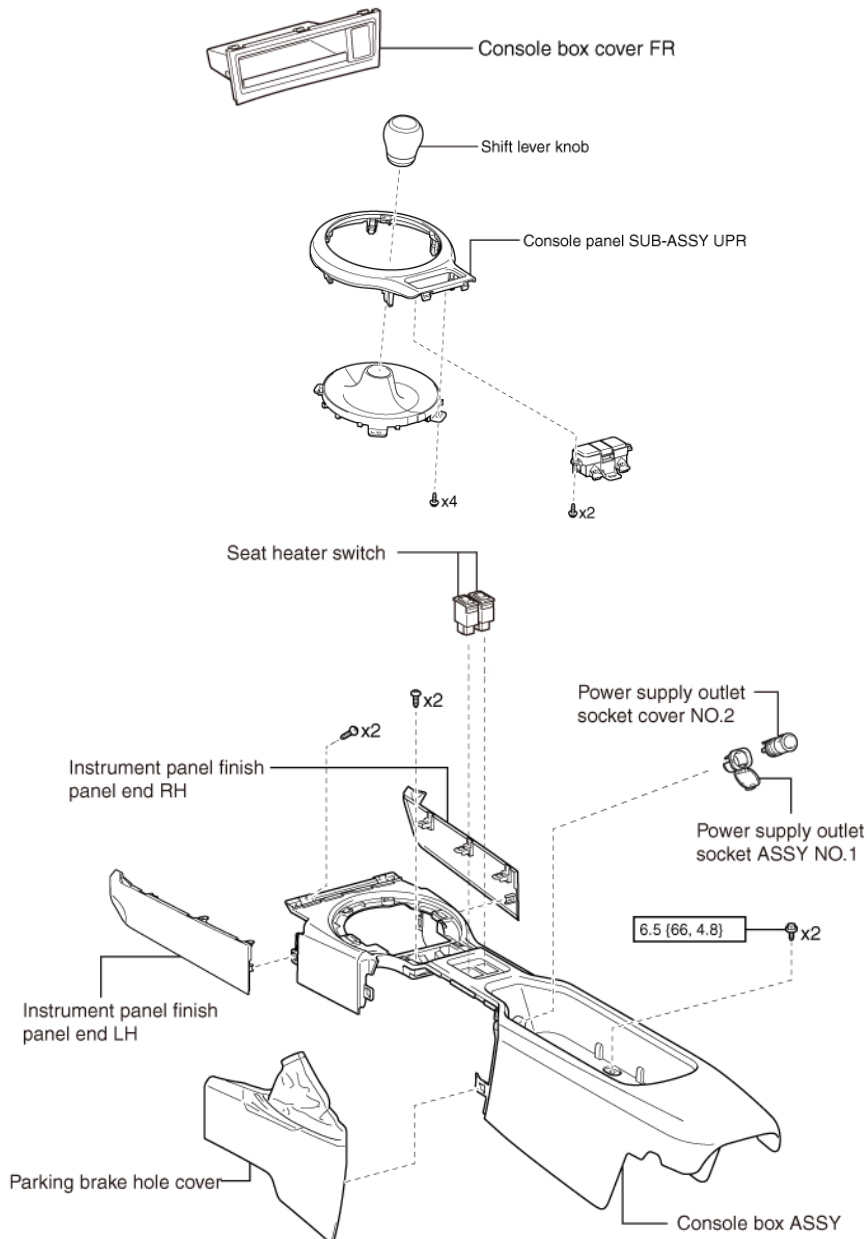




GT86 / BRZ SHORT SHIFTER ASSEMBLY GUIDE

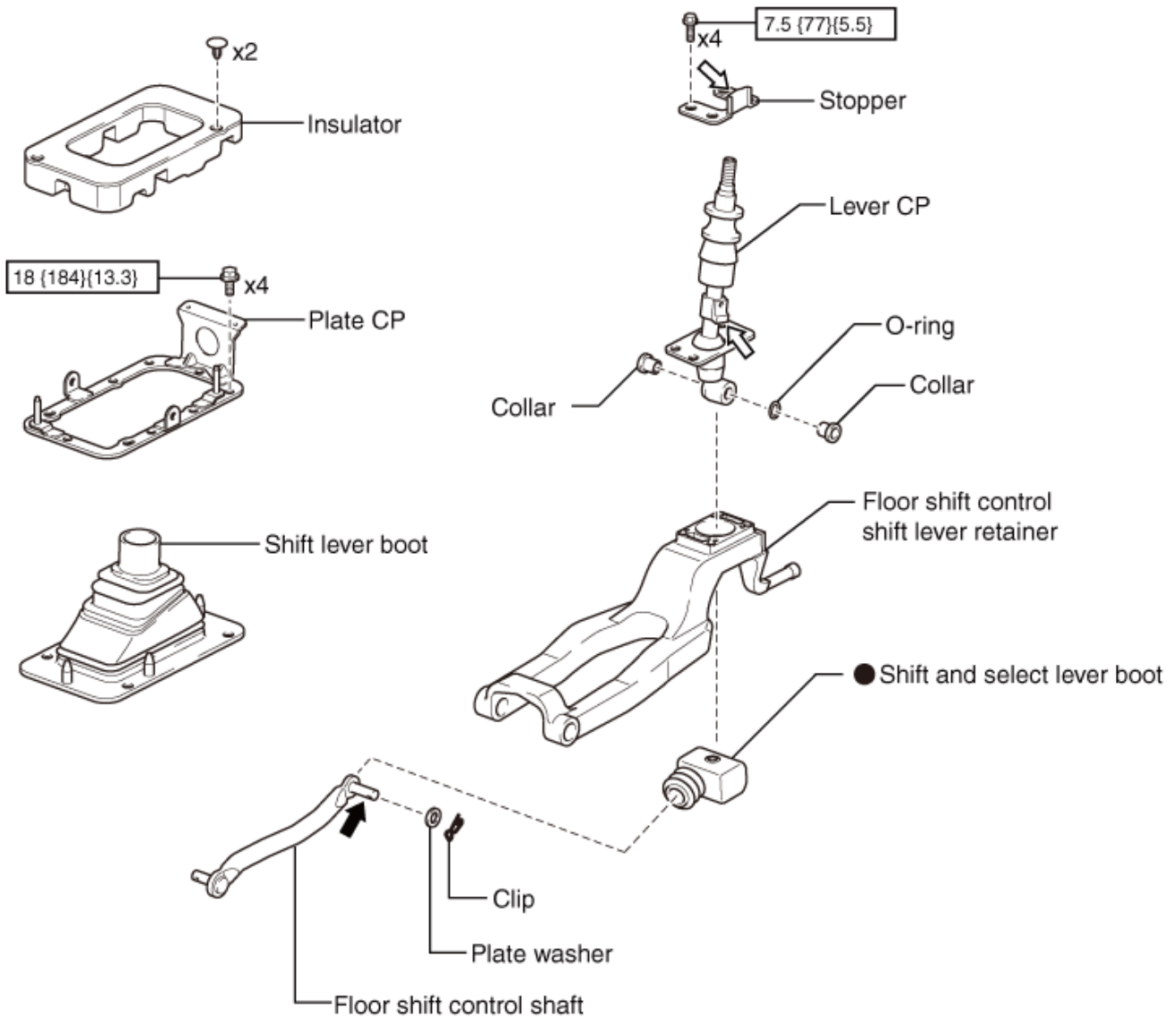
1. Begin by placing the car on a hoist or jack stands with adequate room to access the transmission
2. Remove the following items in the order shown:
 - Console box cover
 - Shift lever knob
 - Console panel ASSY
 - Parking brake hole cover (boot)
 - Instrument finish panel end (LH + RH)
3. Remove 4 screws at the front of the console box ASSY and the 2 bolts at the rear underneath the rubber
4. Unplug heater switch and power supply outlet from underneath
5. Remove console box ASSY





GT86 / BRZ SHORT SHIFTER ASSEMBLY GUIDE

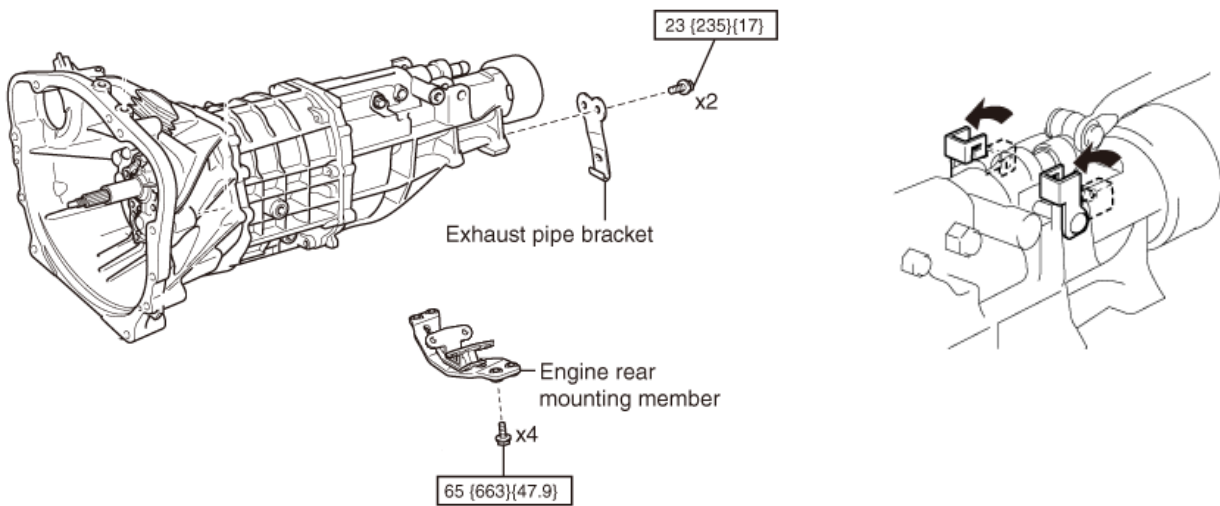
1. Remove the following items:
 - Insulator by removing 2 x clips
 - Wiring harness attached to Plate CP then the 4 x bolts to remove the Plate CP
 - Shift lever boot
2. Under the car, peel back the Shift and select lever boot
3. Remove Clip and Plate washer, then disconnect Lever CP from the Floor shift control shaft
4. Remove 4 x bolts and Stopper then the Lever CP from Floor shift control lever retainer



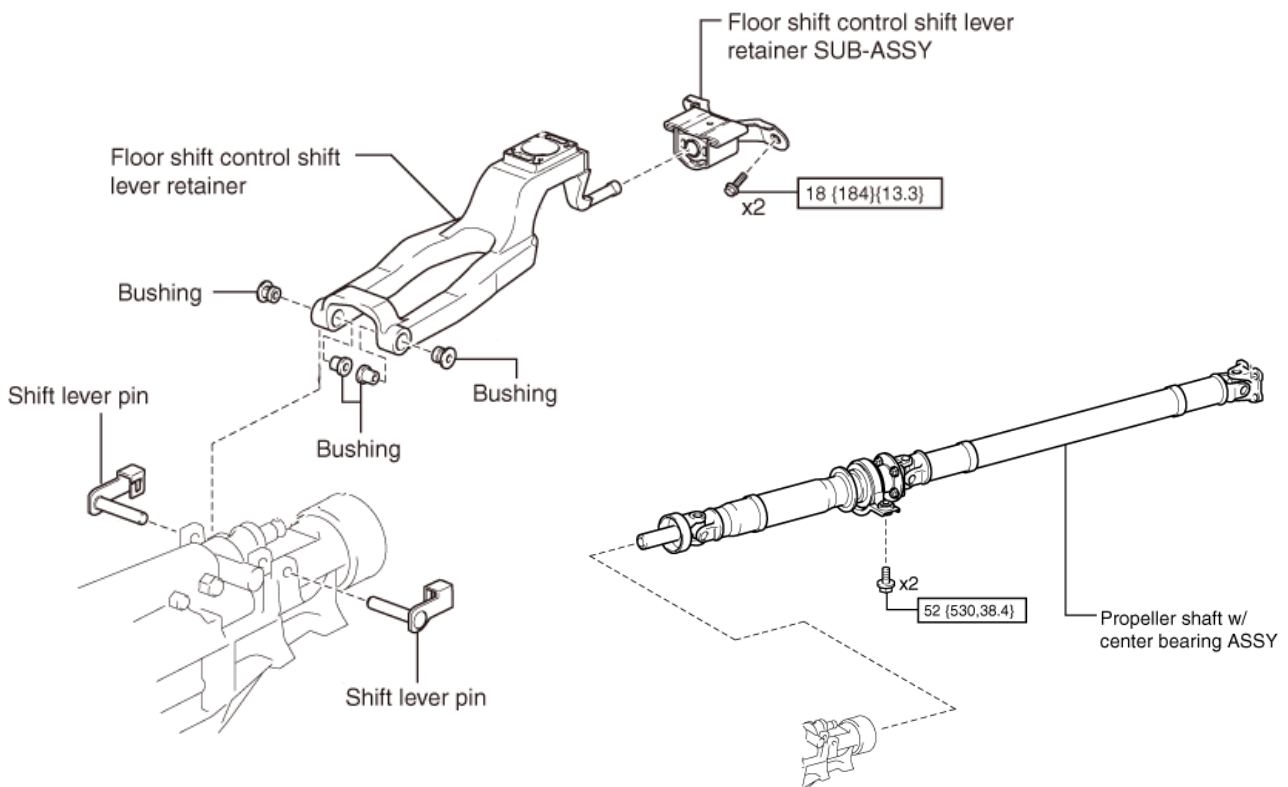


GT86 / BRZ SHORT SHIFTER ASSEMBLY GUIDE

1. Support the transmission with a transmission jack
2. Remove the 4 x rear mounting member bolts and lower the transmission for additional access
3. Remove 2 x Shift lever pins by turning upwards then sliding outwards



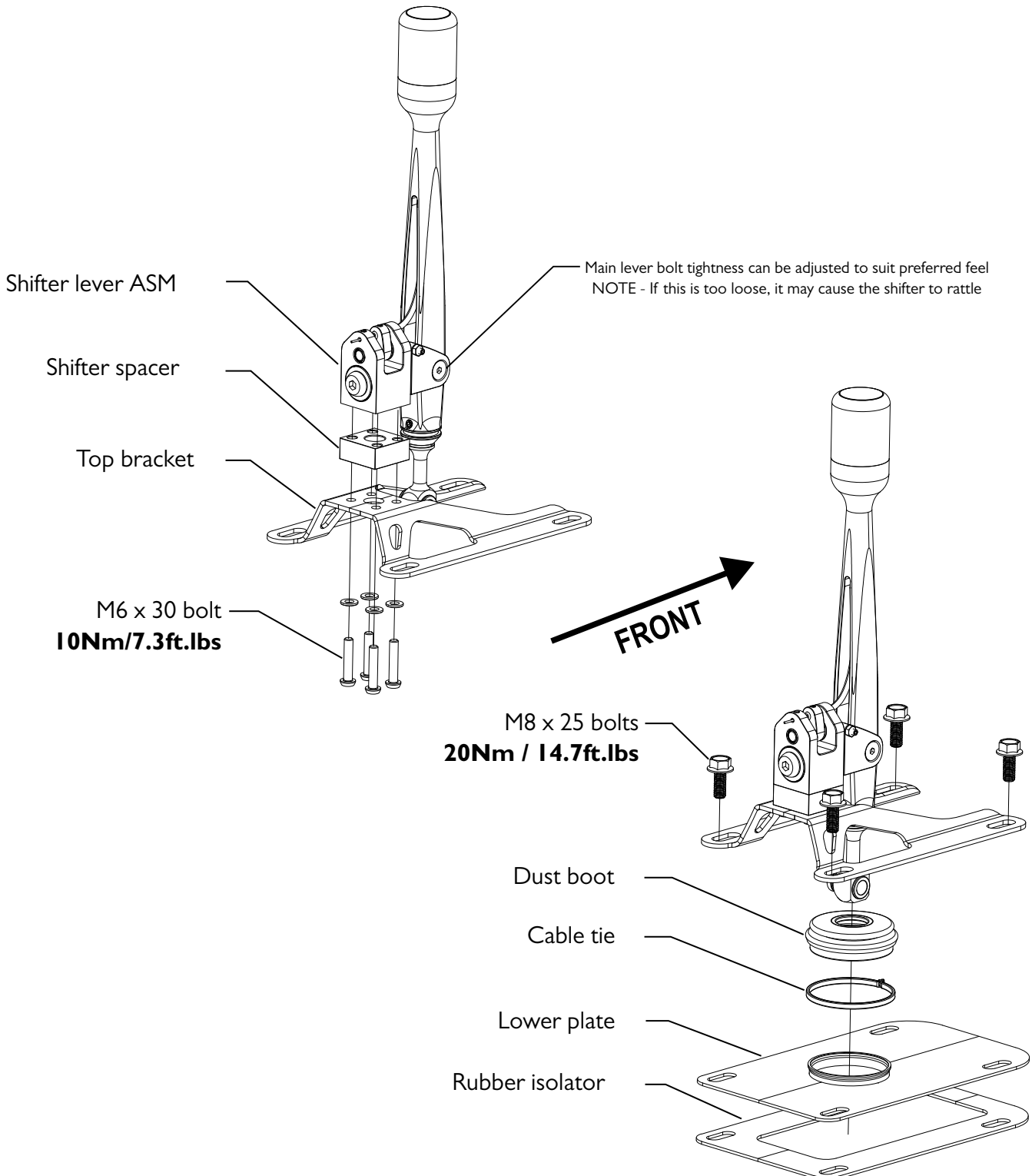
4. Remove 2 x bolts and the Floor shift control shift lever retainer SUB-ASSY
5. Remove 2 x bolts from centre bearing ASSY then lower propeller shaft for additional access
6. Remove Floor shift lever retainer





GT86 / BRZ SHORT SHIFTER ASSEMBLY GUIDE

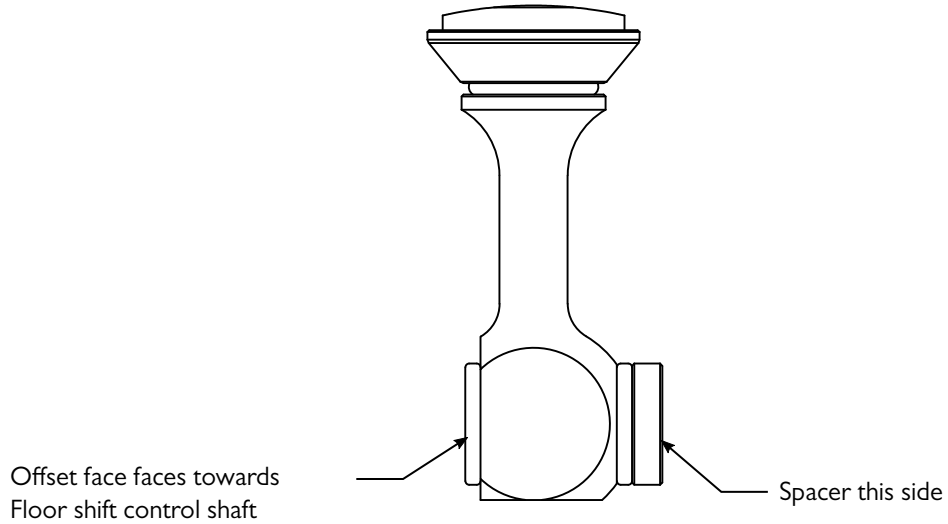
1. Install Shifter lever ASM onto Top bracket using the parts shown below
2. Use a 4mm HEX and torque the bolts to specification
3. Install Dust boot onto Lower plate with cable tie as shown
4. Install plates in order shown below onto the transmission tunnel
5. Install the 4 x M8 bolts and torque to the specification shown



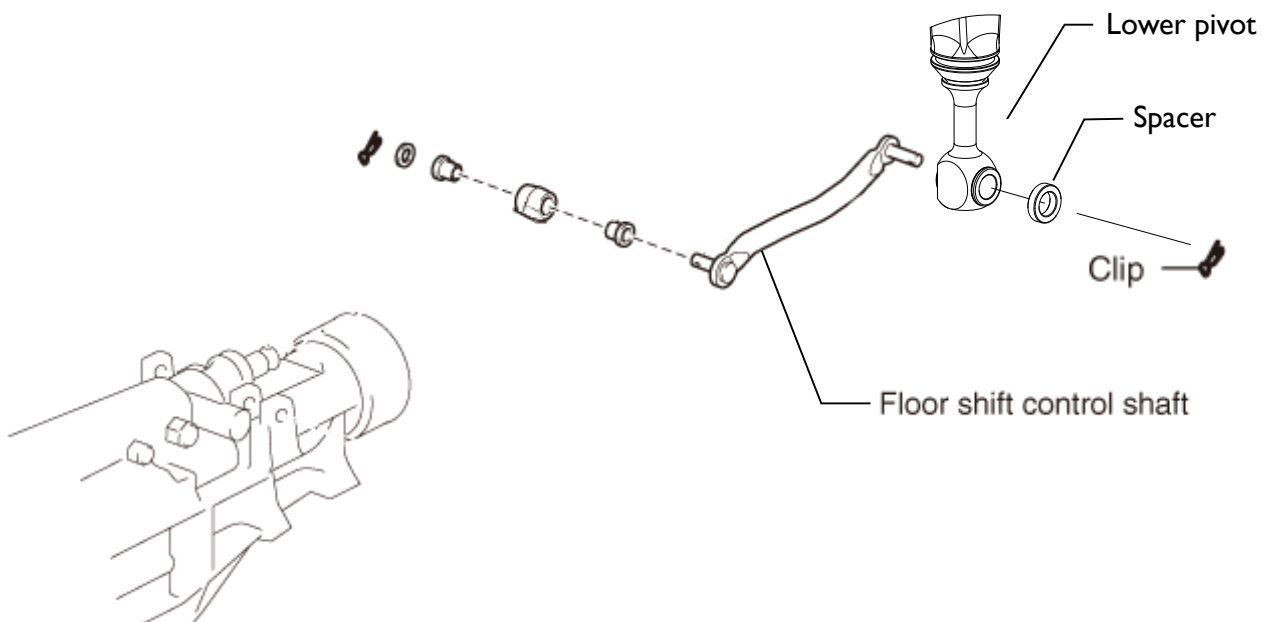


GT86 / BRZ SHORT SHIFTER ASSEMBLY GUIDE

1. Ensure lower pivot is orientated as shown below and the spacer is on the correct side



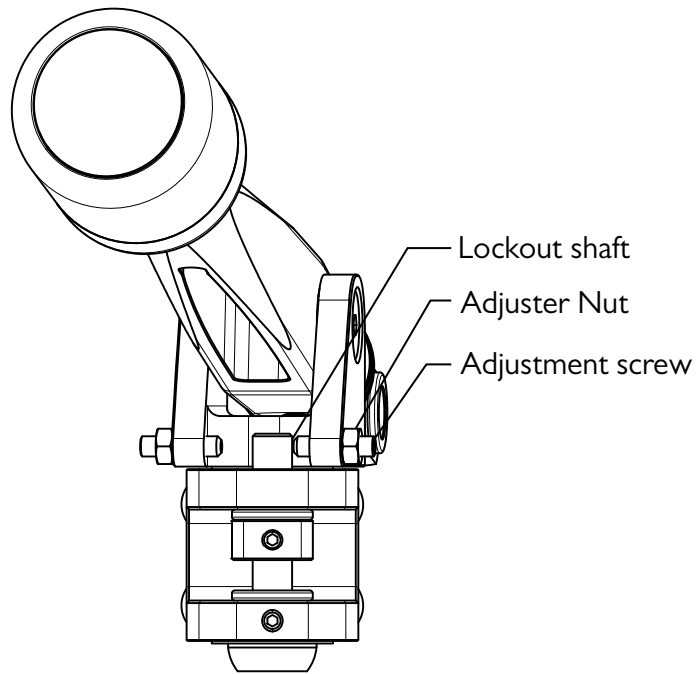
2. Install spacer followed by the lower pivot onto the Floor shift control shaft
3. Re-install the OEM clip
4. Re-install transmission and cross member then torque bolts to specification
5. Re-install the tail shaft centre bearing ASSY and torque to specification
6. Confirm shifter clearance and operation before driving vehicle





GT86 / BRZ SHORT SHIFTER ASSEMBLY GUIDE

1. Fully adjust the set screws outwards
2. Place the shifter lever in to **FIRST** gear
3. Adjust the set screw inwards and stop just before contact is made with the Lockout shaft
4. Hold Adjustment screw in place and lock the Adjuster nut
5. Confirm smooth operation in to 1/2 gear without getting stuck on reverse gate, if contact is made adjust the set screw further inwards



5. Place the shifter in to **SIXTH** gear
6. Adjust the set screw inwards and stop just before contact is made with the Lockout shaft
7. Hold Adjustment screw in place and lock the Adjuster nut
8. Confirm smooth operation in to 5/6 gear adjust set screw if required

