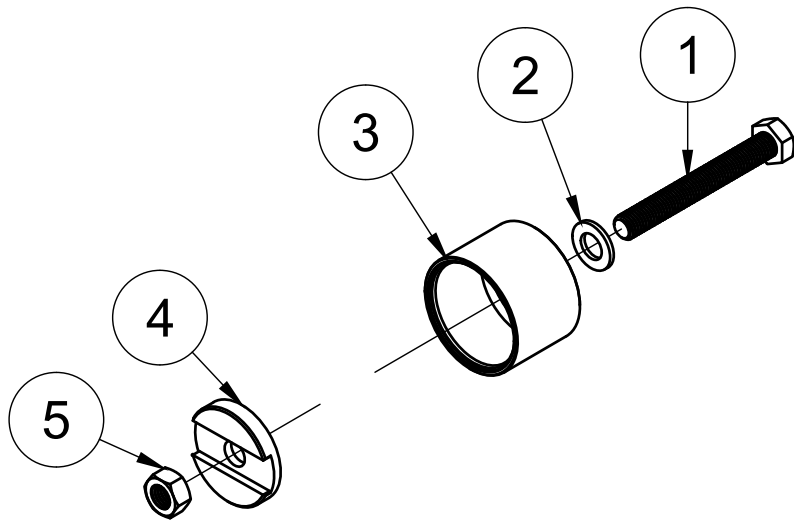


# SCHA-DRMV

1/3



## DIFF REMOVAL

1. REMOVE ANY SUBFRAME BRACING TO GAIN ACCESS TO THE DIFF.
2. REMOVE TAILSHAFT AND DRIVESHAFT BOLTS.
3. REMOVE BREATHER HOSE AND ABS SENSORS.
4. SUPPORT THE DIFF AND REMOVE THE FRONT / REAR DIFF BOLTS AND NUTS.
5. LOWER AND REMOVE THE DIFF.

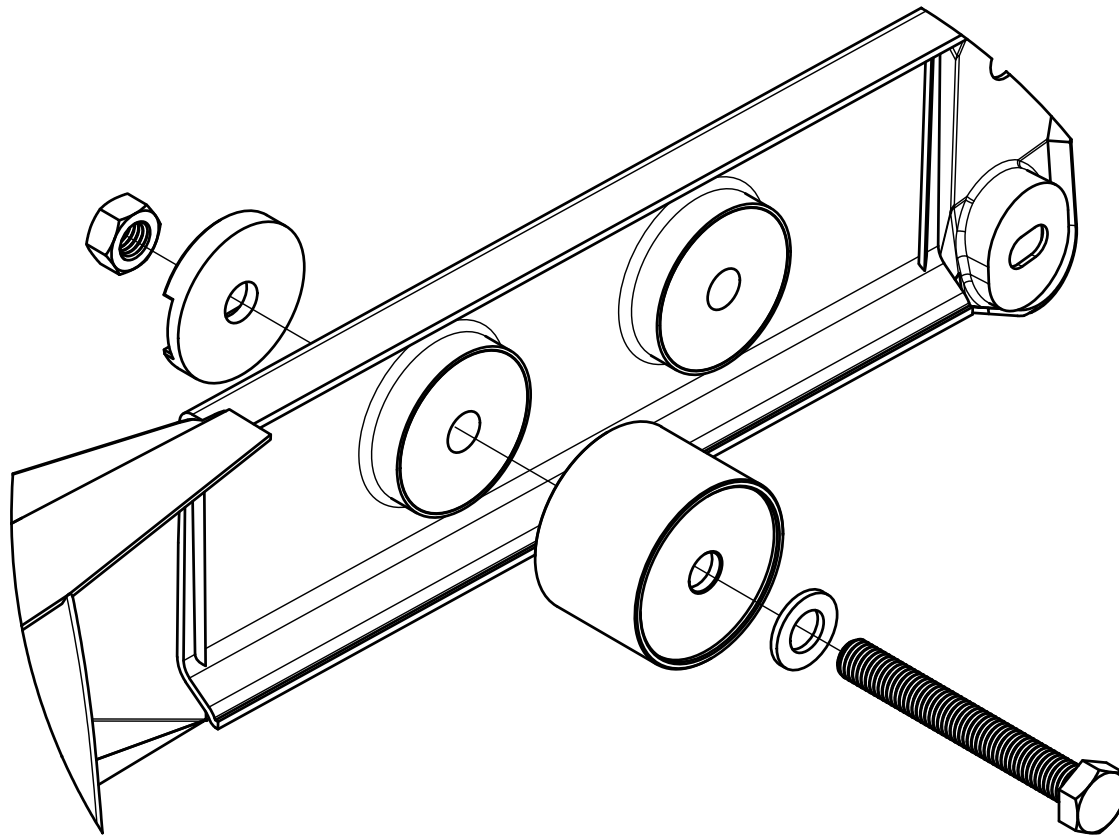
5	DIN 934, STANDARD NUT	1
4	PULL WASHER	1
3	CLEARANCE CUP	1
2	DIN 126, STANDARD WASHER	1
1	DIN 933, HEX HEAD CAP SCREW	1
Item	Description	Qty
Parts List		

**gktech**  
\_com

# SCHA-DRMV

## 2/3 **DIFF BUSH REMOVAL**

1. APPLY GENERAL PURPOSE GREASE TO THE THREAD AND NUT FOR LUBRICATION.
2. SETUP THE DIFF BUSH REMOVAL TOOL AS SHOWN BELOW.
3. TIGHTEN THE DIFF BUSH REMOVAL TOOL FROM THE BOLT HEAD. CONTINUE TIGHTENING UNTIL THE BUSH IS FULLY PULLED INTO THE CLEARANCE CUP. THE TOOL SHOULD THEN COME LOOSE FROM THE SUBFRAME.



# SCHA-DRMV

## 3/3 **DIFF BUSH INSTALLATION**

1. APPLY GENERAL PURPOSE GREASE TO THE THREAD AND NUT FOR LUBRICATION.
2. CLEAN AND APPLY GREASE TO THE INNER BUSH SURFACE IN THE SUBFRAME.
3. SETUP THE TOOL IN THE INSTALLATION CONFIGURATION AS SHOWN BELOW.
4. SLOWLY TIGHTEN THE HEAD OF THE BOLT TO PULL IN THE NEW BUSH ,WHILE CHECKING FOR MISALIGNMENT.
5. CONTINUE TIGHTENING THE BOLT HEAD UNTIL A SHARP INCREASE IN TORQUE IS EXPERIENCED. THIS INDICATES THAT THE INSTALLED BUSH IS NOW FULLY SEATED. THE TOOL CAN THEN BE REMOVED FROM THE SUBFRAME.
6. REPEAT THE PROCESS TO INSTALL BOTH REAR DIFF BUSHES.
7. RE-INSTALL THE DIFF USING THE REVERSE OF THE PROCEEDURE FOR DIFF REMOVAL.
8. TORQUE TO THE SPECIFIED VALUES ON PAGE 1/3.

