

SCHA-2BLB

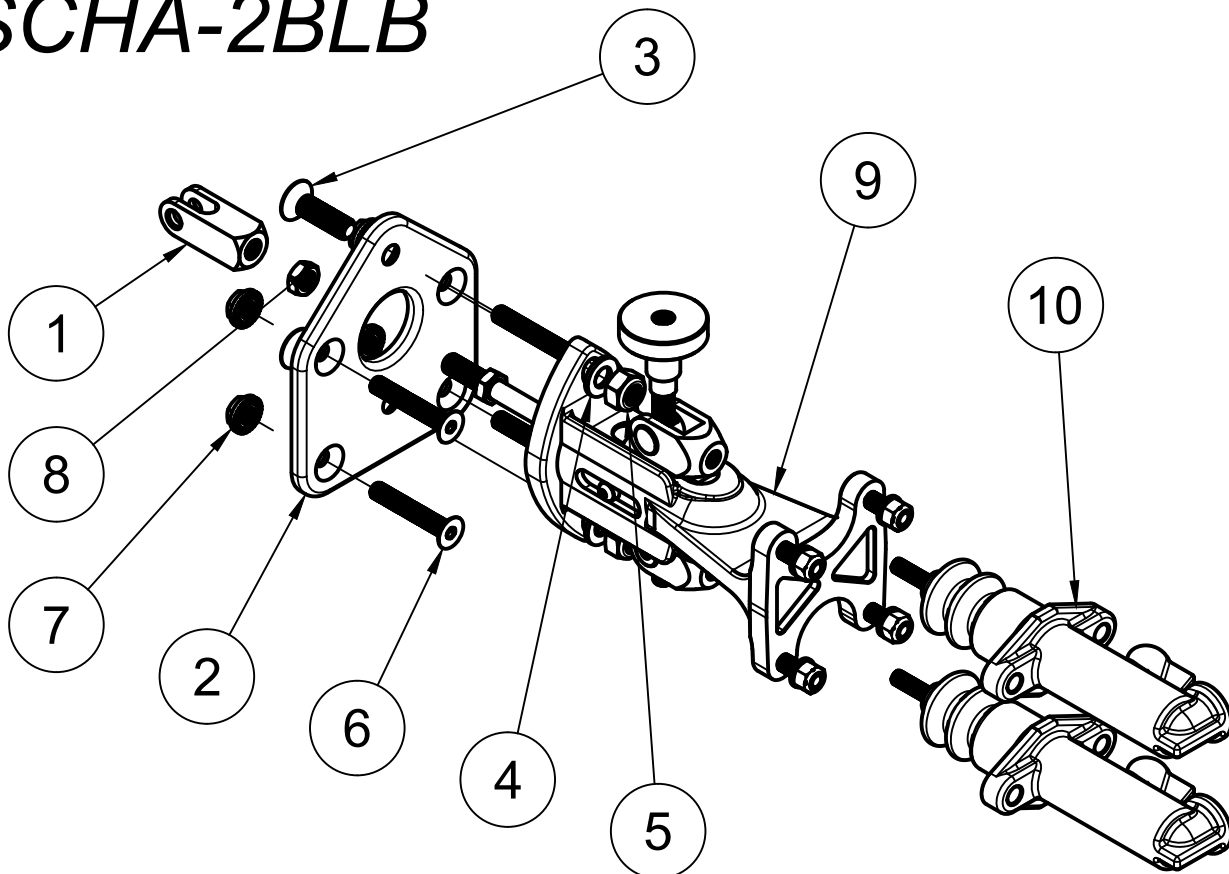


DIAGRAM A

1. REMOVE THE BRAKE PEDAL ASSEMBLY AND BRAKE BOOSTER ASSEMBLY FROM THE VEHICLE.
2. IN THE ENGINE BAY, TEST FIT THE ADAPTER PLATE TO THE FIREWALL.

MARK AND TRIM THE FIREWALL AS SHOWN IN DIAGRAM B.

CRITICAL!!

THE PEDAL ASSEMBLY WILL NEED TO BE MODIFIED TO CHANGE THE PEDAL RATIO TO WORK WITH A NON-BOOSTED BRAKE ASSEMBLY.

CRITICAL!!

TRIM THIS SECTION OF FIREWALL TO MATCH ADAPTER PLATE HOLE

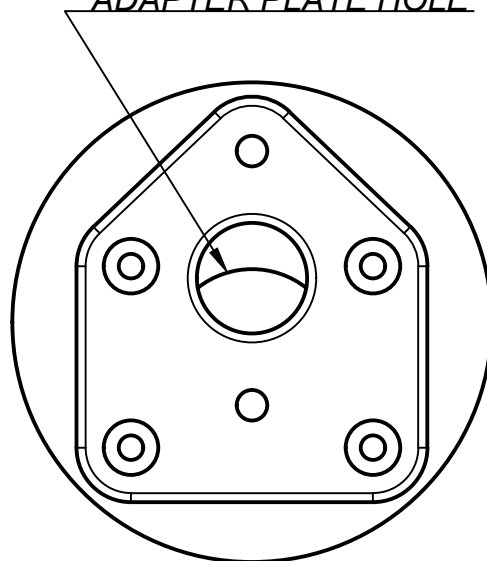


DIAGRAM B

10	FLUX INLINE MASTER CYLINDERS	2
9	WILWOOD TANDEM MOUNT BALANCE BAR	1
8	3/8-24 THIN NUT	1
7	M8 FLANGE LOCK NUT	4
6	M8 x 50 COUNTERSUNK BOLT	4
5	M10 NYLOC NUT	2
4	M10 WASHER	2
3	M10 x 35 COUNTERSUNK BOLT	2
2	VERTICAL ADAPTER PLATE	1
1	ADJUSTED PEDAL RATIO CLEVIS	1
ITEM:	DESCRIPTION:	QTY:
PARTS LIST:		



DIAGRAM C

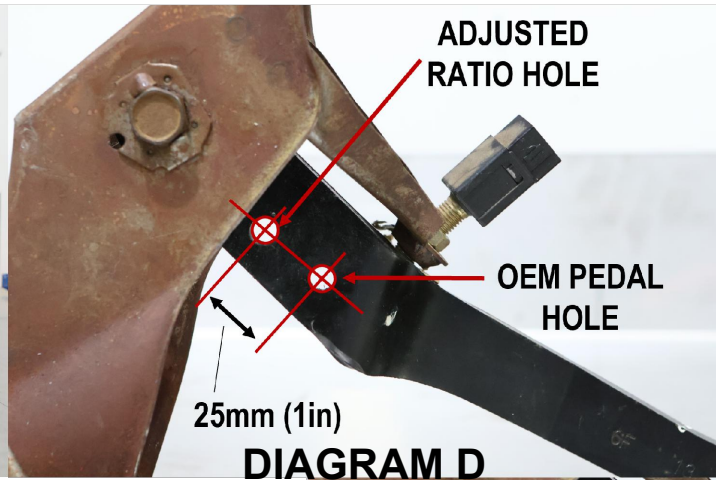


DIAGRAM D



DIAGRAM E

3. TO MODIFY THE OEM PEDAL RATIO, A NEW HOLE MUST BE DRILLED. YOUR PEDAL MAY LOOK DIFFERENT TO THE PEDAL PICTURED IN DIAGRAM C BUT THE MEASUREMENTS CAN STILL BE USED

USE DIAGRAMS D AND E TO MARK THE NEW HOLE LOCATION. THE NEW HOLE SHOULD BE 25MM CLOSER TO THE PEDAL PIVOT WHILE THE HOLE CENTER REMAINS NO MORE THAN 15MM FROM THE PEDAL SIDE.

4. USE AND PUNCH TO MARK THE HOLE CENTRE AND AN 8MM DRILL BIT TO CREATE THE NEW HOLE.

CRITICAL!! DO NOT LET THE DRILLED HOLE EXCEED 8MM IN DIAMETER OTHERWISE THIS WILL CAUSE SLOP IN THE PEDAL.

5. TEST THE ASSEMBLY ON THE BENCH. USING THE M10 COUNTERSUNK BOLTS, BOLT THE WILWOOD ASSEMBLY TO THE ADAPTER PLATE, THEN USE THE M8 COUNTERSUNK BOLTS AND FLANGE NUTS TO ATTACH THE BRAKE PEDAL. THREAD THE MASTER CYLINDERS ON TO THE BALANCE BAR CLEVISES AND USE THE NYLOCS FROM WILWOOD TO HOLD IN PLACE. USE THE SUPPLIED CLEVIS AND JAM NUT TO ASSEMBLE THE PEDAL TO THE NEW DRILLED HOLE.

CRITICAL!! CONFIRM THAT THE PEDAL IS FULLY RETURNING AND MAKE ANY ADJUSTMENTS TO BEFORE PROCEEDING.

6. WHILE ASSEMBLES ON THE BENCH, BLEED BOTH MASTER CYLINDERS, THEN REMOVE THE BRAKE PEDAL FOR VEHICLE INSTALLATION.
7. WHILE HOLDING THE BRAKE PEDAL IN POSITION IN THE ENGINE BAY, GET SOMEONE TO INSERT THE BALANCE BAR ASSEMBLY FROM THE ENGINE BAY.

INSERT THE OEM CLEVIS PIN THROUGH THE NEW HOLE AND INSTALL CLIP. THEN TIGHTEN THE REMAINING BRAKE PEDAL NUTS.

8. ATTACH THE REMOTE RESERVOIR AND BRAKE LINES AND BLEED THE BRAKES.

MAKE ANY FINE ADJUSTMENTS USING THE MASTER CYLINDER SHAFTS TO TAKE UP ANY SLACK.