

S134-0350
S134-3065

TIGHTEN NUT TO 110 Nm (82 lbs-ft)

OEM CASTER ALSO
CENTERED AROUND
ELONGATED HOLE

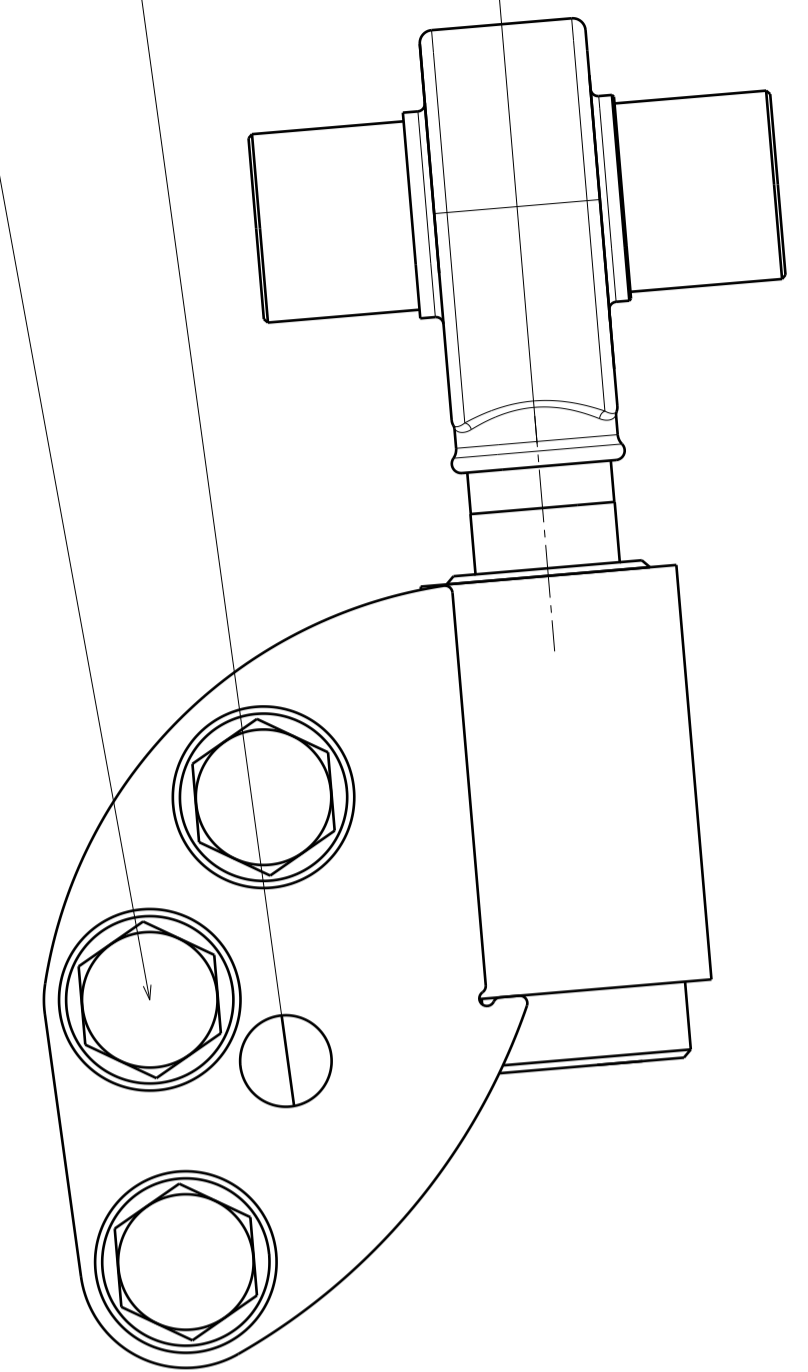
FOR OEM CASTER

S14 - 3°
S13 - 0°

CRITICAL!

ENSURE THERE IS NO BINDING OF
THE ROD END BEARINGS AFTER
ADJUSTING THE ARM LENGTH

CHECK BY PUSHING THE ARM UP
AND DOWN WITH IT
DISCONNECTED FROM THE
STEERING KNUCKLE



12mm ALLEN L-KEY (VERNIER ADJUSTER)

10mm ALLEN L-KEY (INNER ROD
END JAM NUT)
TURN COUNTER CLOCKWISE TO
TIGHTEN AGAINST ROD END

END LINK COMPATIBLTY
- OEM END LINKS CANNOT BE USED DUE TO
EXTRA THICKNESS
- GKTECH FRONT SWAY BAR END LINKS
(SKU - FRNT-ENDL) CAN BE USED
- GKTECH PREMIUM FRONT SWAYBAR END
LINKS (SKU - PRMM-ENDL) CAN BE USED IF
HOLE IS DRILLED OUT TO 12MM

ADJUST STEERING ANGLE LIMITER TO
PREVENT STEERING RACK RUNNING AT
MAXIMUM STROKE

TIGHTEN BOLTS TO 20 Nm(12lbs-ft)

TIGHTEN TO 90 Nm (65 lbf-ft)

OEM BOLT TORQUE: 110 Nm (82 lbf-ft)

REMOVE THIRD BOLT AND SPACER
WHEN INSTALLED ON S13

OEM BOLT TORQUE: 110 Nm (82 lbf-ft)

TIGHTEN NUT TO 110 Nm (82 lbs-ft)

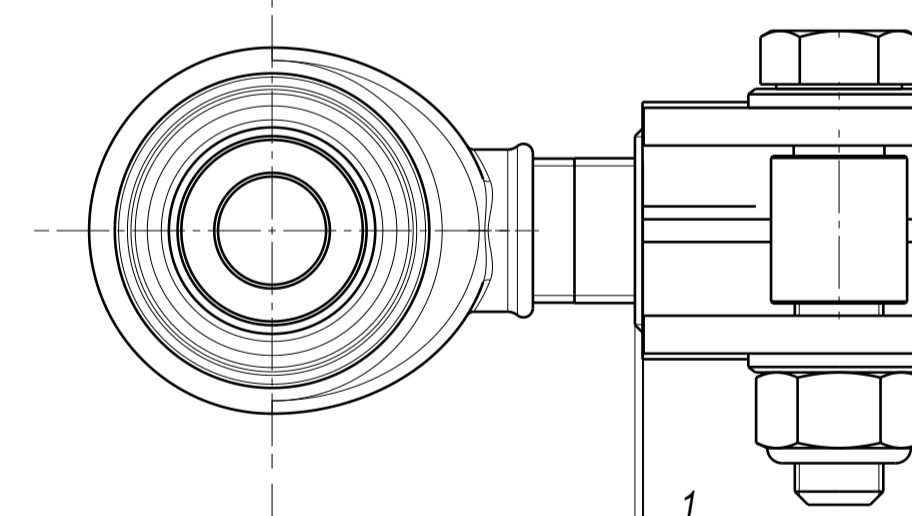
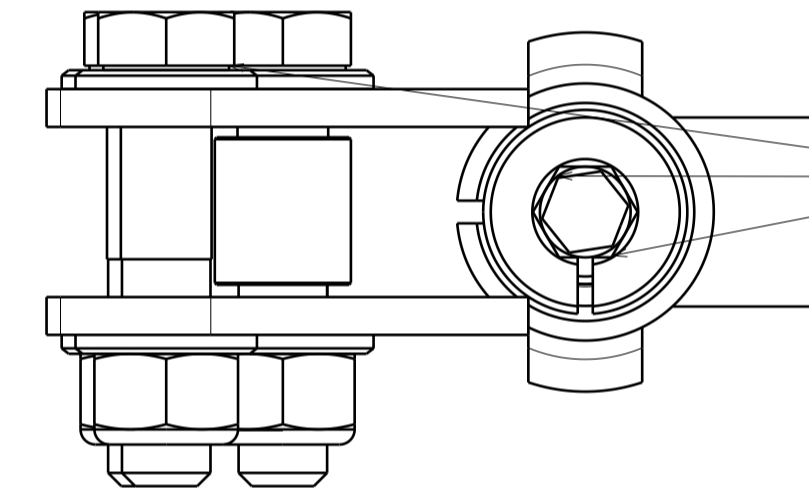
STEERING ANGLE LIMITER CAN BE
MOUNTED IN 3 POSITIONS - MUST
BE INSTALLED WITH TWO BOLTS

ANTI-ROLL BAR END LINK MOUNTING
INSIDE POSITION FOR SOFTER,
OUTSIDE FOR STIFFER SETTING
(CHASSIS SIDE IS INSIDE)

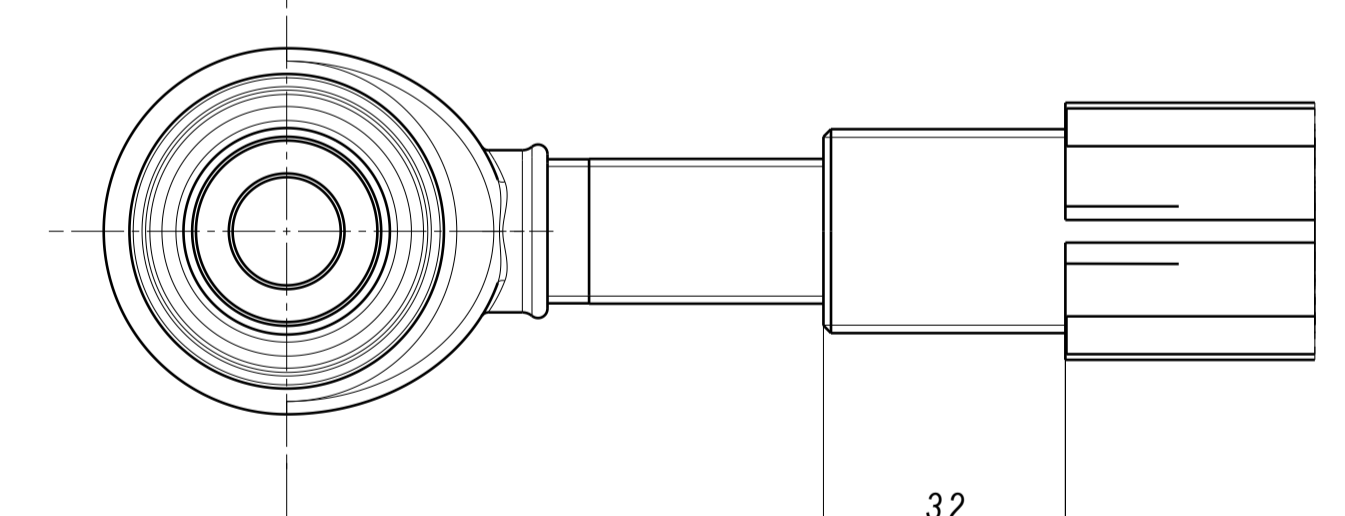
TIGHTEN TO 30 Nm (22 lbs-ft)

HOW TO ADJUST CASTER

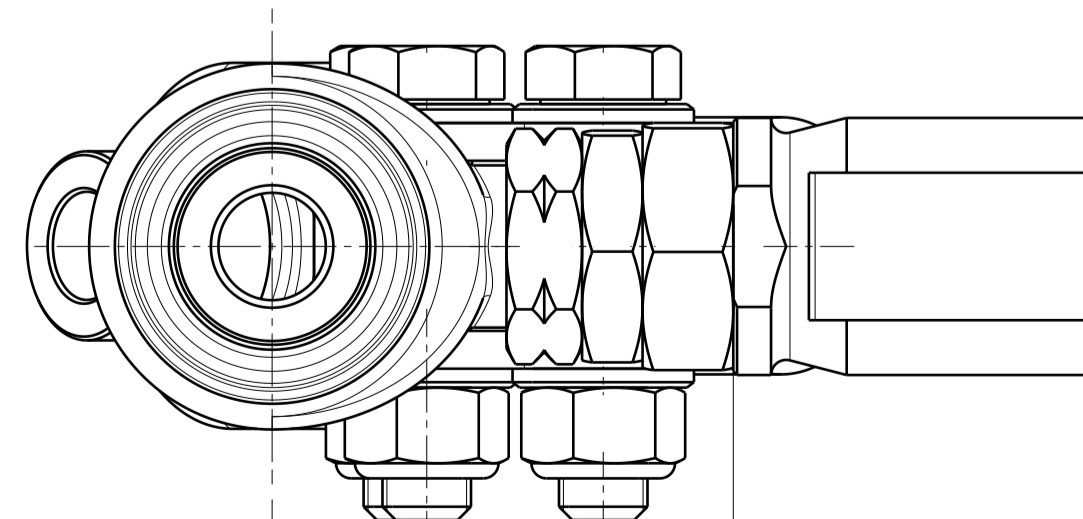
1. LOOSEN INTERNAL HEX SCREW - 10mm
2. LOOSEN BOLTS
3. ADJUST CASTER FROM INTERNAL HEX SLEEVE - 12mm
4. TIGHTEN BOLTS TO 90 Nm (65 lbf-ft)
5. TIGTEHN INTERNAL HEX SCREW TO 90 Nm (65 lbf-ft) - **LEFT HAND THREAD**



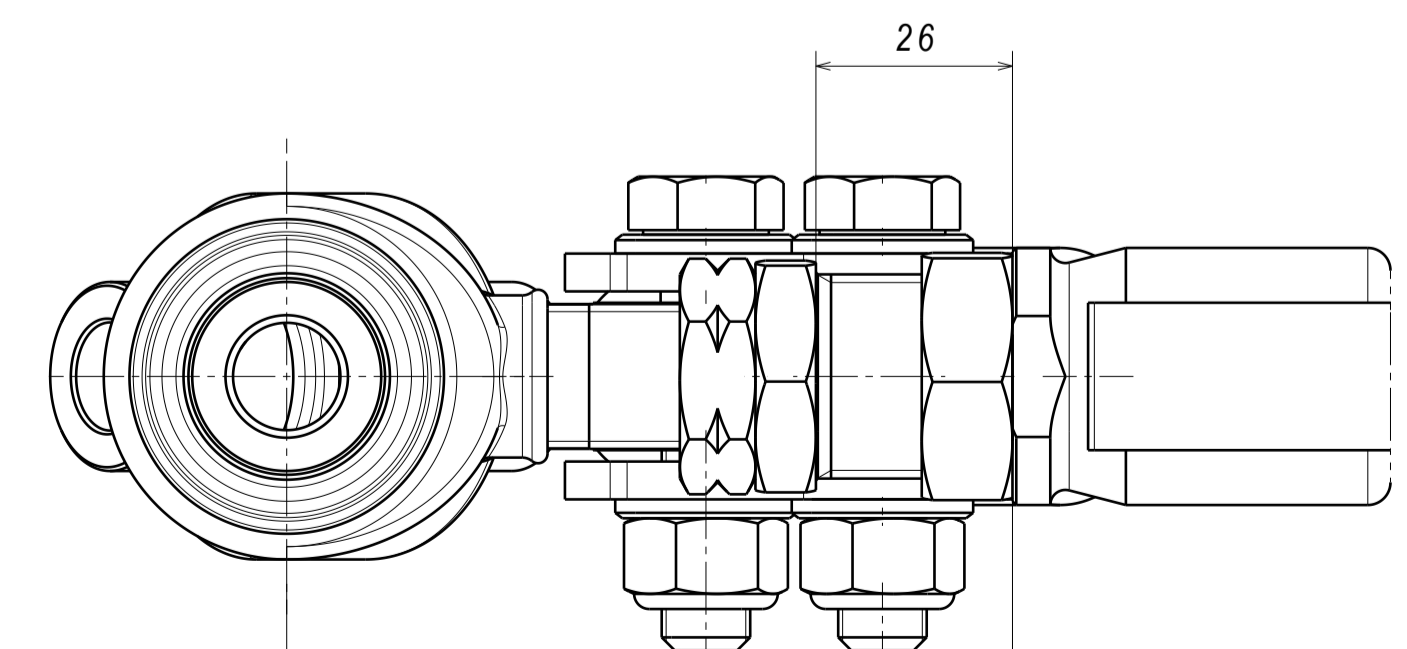
FRONT ROD END (TENSION) - OEM SPEC



FRONT ROD END (TENSION) - MAX EXTENSION



REAR ROD END (LCA) - OEM SPEC



REAR ROD END (LCA) - MAX EXTENSION

CASTER BRACKET - S14/S15 POSITION

**CASTER BRACKET -
S13 POSITION**

1. SHANK (ITEM 14) MUST BE ATTACHED TO THE KNUCKLE AND TORQUED TO 90-120 Nm PRIOR TO ATTACHING TO THE CONTROL ARM AND TORQUING LOWER NUT TO 90-120 Nm
2. DUST CAP (ITEM 15) TO BE PRESSED INTO SPHERICAL BEARING HOUSING
3. M8 BOLTS (ITEM 3) TIGHTENED TO 20 Nm
4. ROD END JAM NUTS TIGHTENED TO 200Nm
5. ROD ENDS MUST NOT BE TURNED FURTHER THAN 35mm STANDARD POSITION (SEE EXTRA DRAWING)

PC NO	COMPONENT NAME	QTY
1	BOTTOM A-ARM WELDING ASM S14 STD R/H	1
2	BOTTOM A-ARM S13/S14 LOCK STOP ASM	1
3	BOTTOM A-ARM S14 BRACKET ADJUSTER	1
4	FLCA VERNIER SLEEVE	1
5	FLCA M27x2 NUT	1
6	NUT 3/4-16 UNF 3B L/H	1
7	SPACER PCML12T 14ID 63W	2
8	S14 SHANK STD	1
9	BALL JOINT SHAFT SPACER - STD LENGTH	1
10	ISO 7092 WASHER 14x24 STEEL ZN HOT	2
11	DIN 985-8 M14x1.5 NYLON LOCKING NUT	2
12	DIN 472 RETAINING RING 40x1.75	1
13	BEARING YPB12T	1
14	ROD END PCML12T-ES	1
15	QA1 PCML12T BOOT REV2.14	1