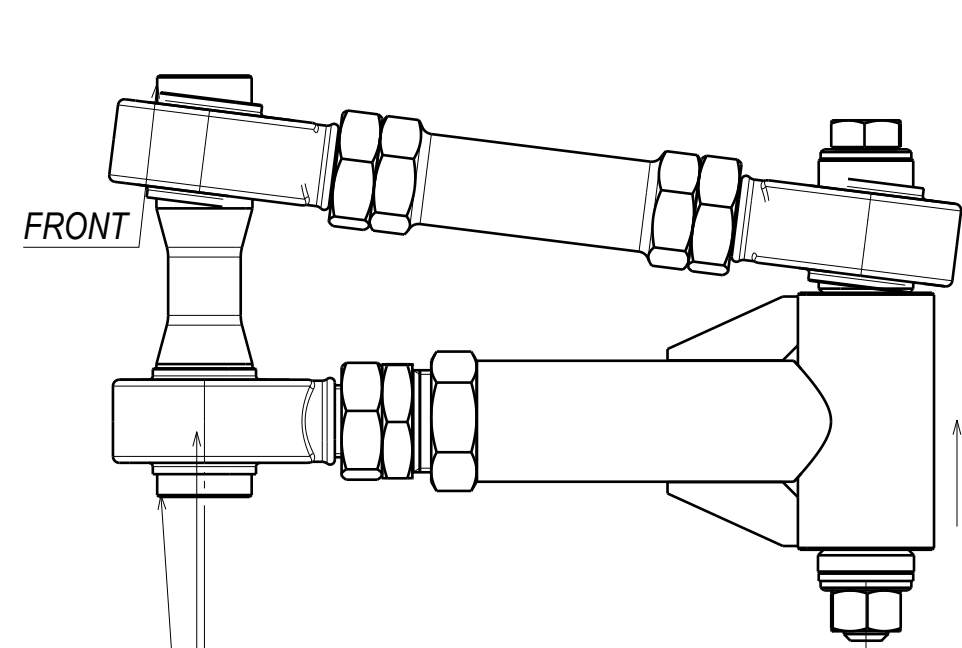


R32X-FUCA

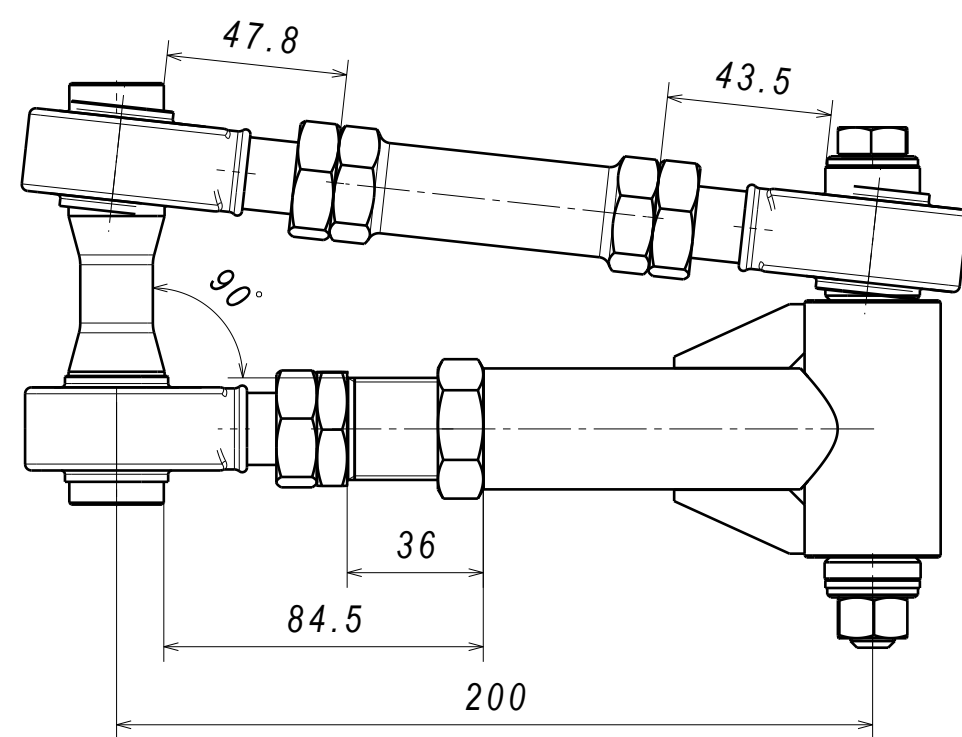
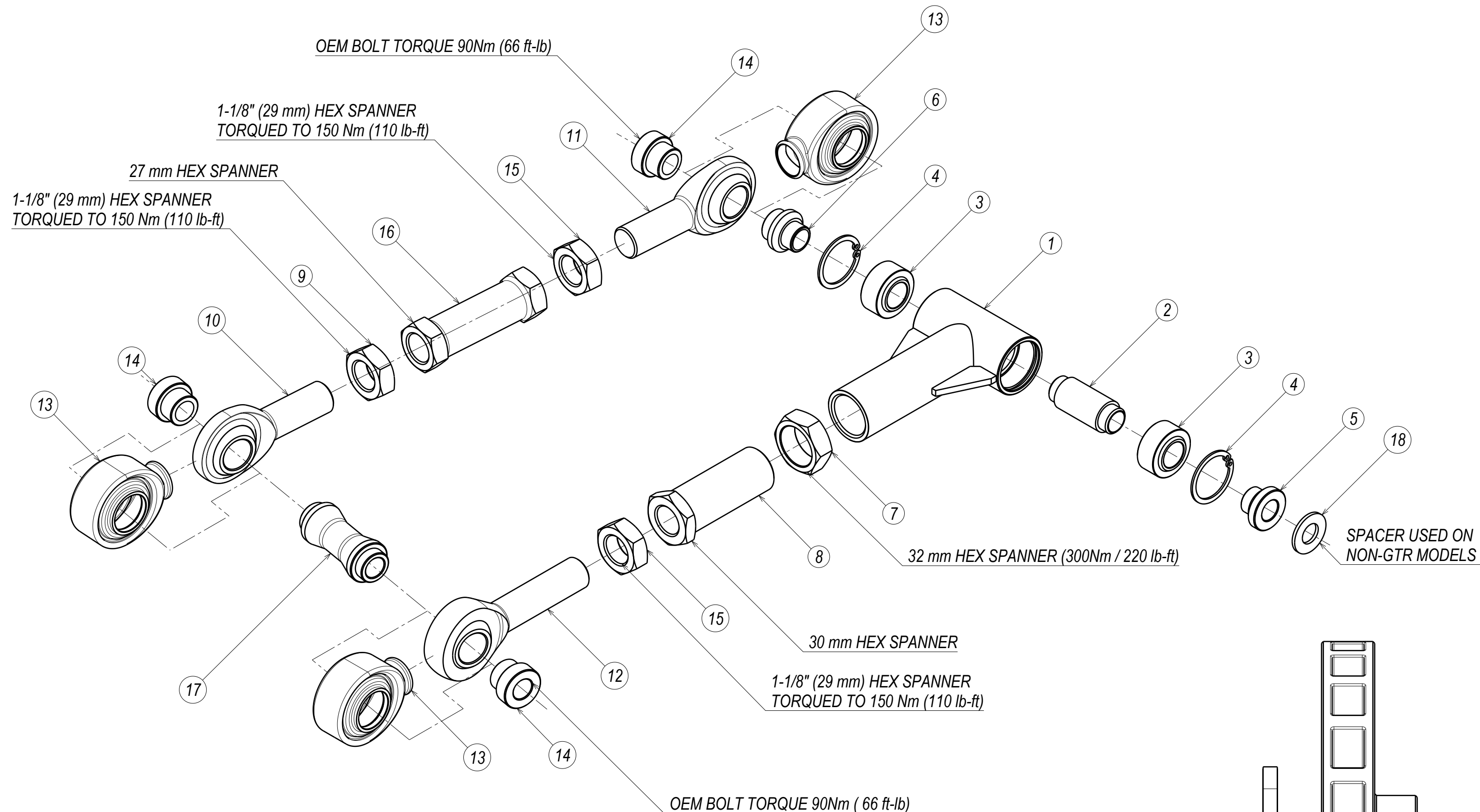


175 (165-200)

CRITICAL!

CHECK FOR ROD END BEARING ALIGNMENT
AFTER TIGHTENING THE ADJUSTING MECHANISM
ROD END TO BE PERPENDICULAR TO THE SPACERS

C
H
A
S
S
I
S
I
D
E



ROD ENDS TO HAVE MINIMUM OF 15mm THREAD ENGAGEMENT,
27mm FOR ADJUSTER (NOT INCLUDING JAM NUTS)

18	R32 FRONT UPPER ARM WASHER	1
17	R32 FRONT UPPER ARM LONG SPACER	1
16	R32 FRONT UPPER ARM TURNBUCKLE	1
15	3/4-16 ASTM A563 GRADE A JAM NUT, LH THREAD	2
14	R32 FUCA PCML12T ROD END SPACER	3
13	QA1 PCML12T BOOT REV2	3
12	ROD END PCML12TES	1
11	ROD END PCMR12T	1
10	ROD END PCML12T	1
9	3/4-16 ASTM A563 GRADE A JAM NUT, RH THREAD	1
8	R32 FUCA VERNIER SLEEVE	1
7	FLCA M27 JAM NUT	1
6	PCML12T-COM10T OFFSET SPACER	1
5	OFFSET SPACER FOR COM10T	1
4	CIRCLIP DIN 472 BORE 32mm	2
3	SPHERICAL BEARING ASM - QA1 COM10T	2
2	R32 FRONT UPPER ARM COM10T OFFSET SPCR	1
1	R32 FRONT UPPER ARM WELDING ASSEMBLY	1
PC NO	COMPONENT NAME	QTY

