

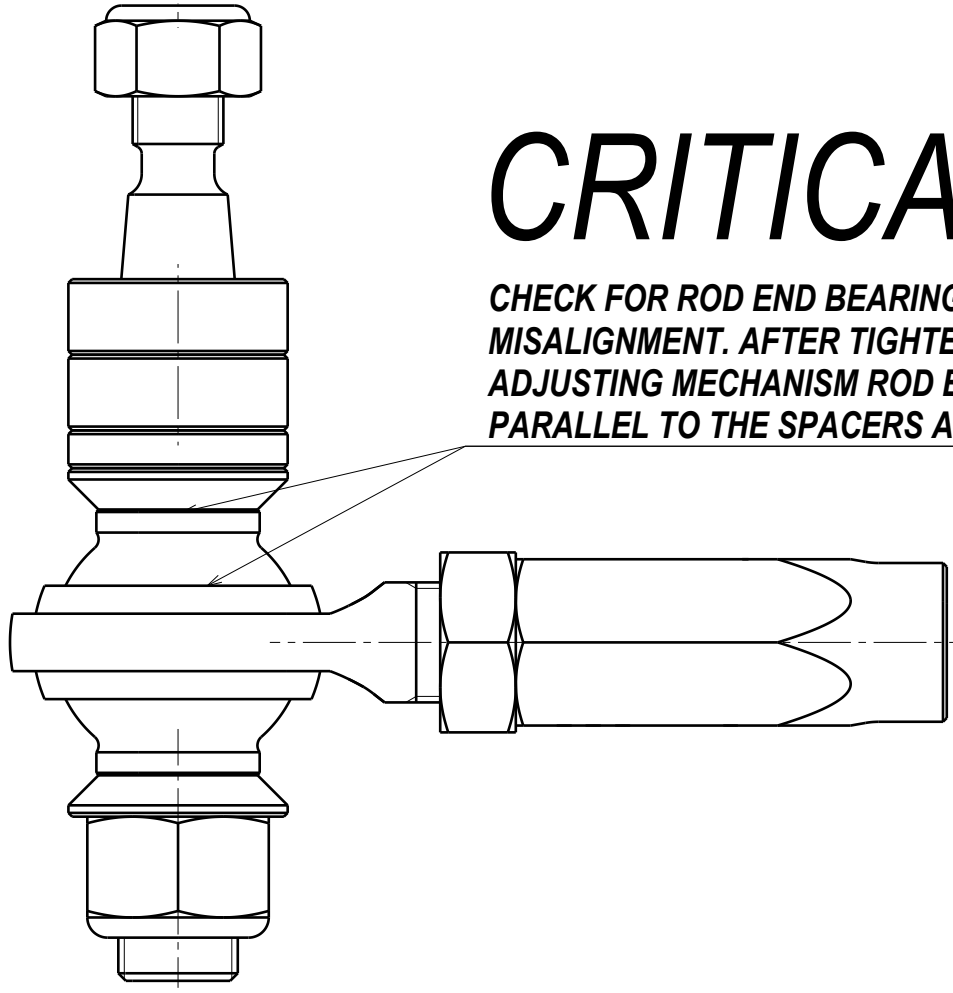
GKTech OUTER TIE ROD INSTALLATION

WHEN USING OEM TIEROD, THE 57MM EXTENDER WILL NEED TO BE USED AND EITHER THE OEM TIEROD OR THE PCML10TS BEARING THREAD WILL NEED TO BE CUT DOWN TO ALLOW CORRECT TOE ADJUSTMENT.

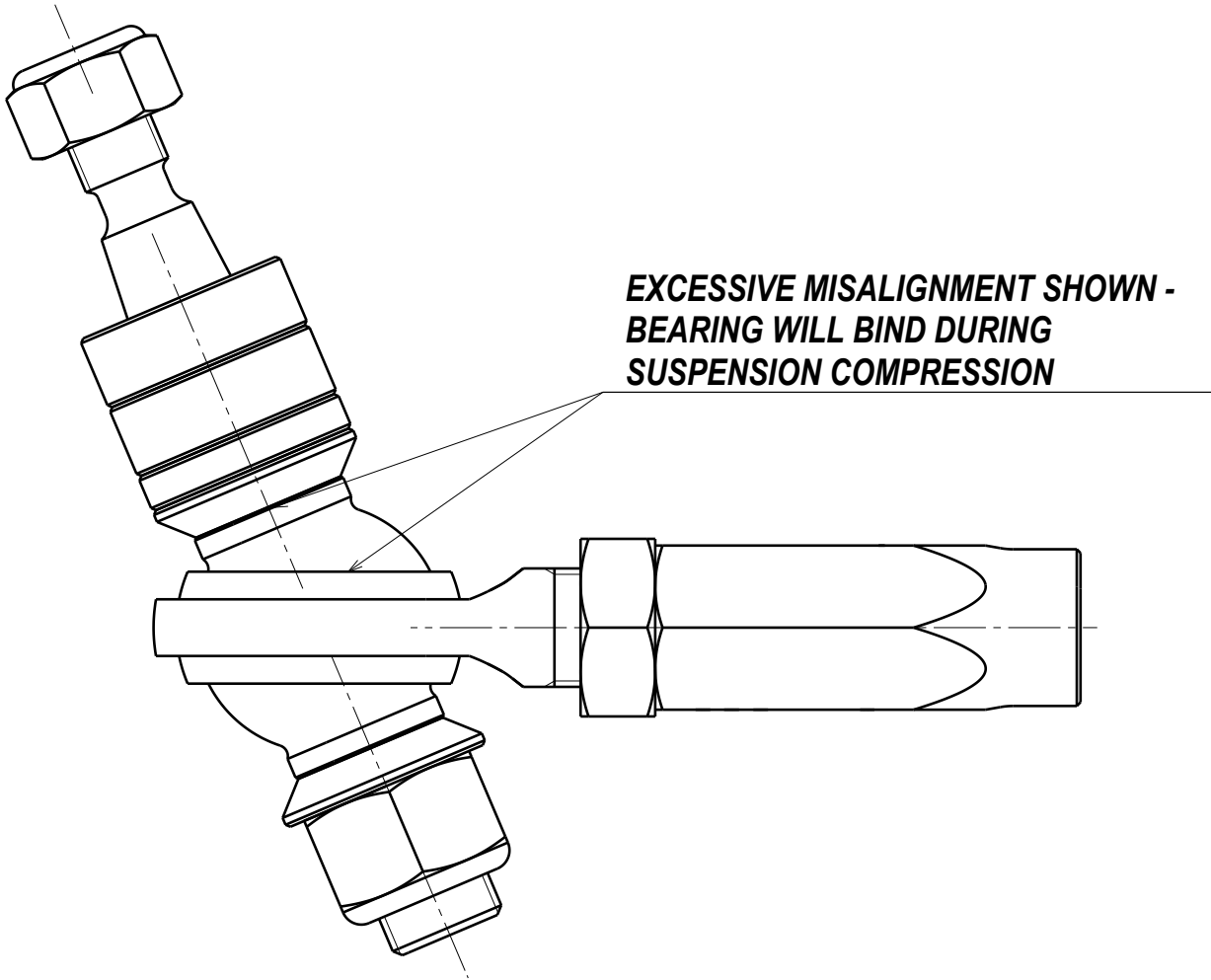
IF REPLACING THE INNER TIEROD WITH GK, THE 77MM EXTENDER CAN BE USED AND THE INNER TIEROD CAN BE CUT DOWN FURTHER

CRITICAL!

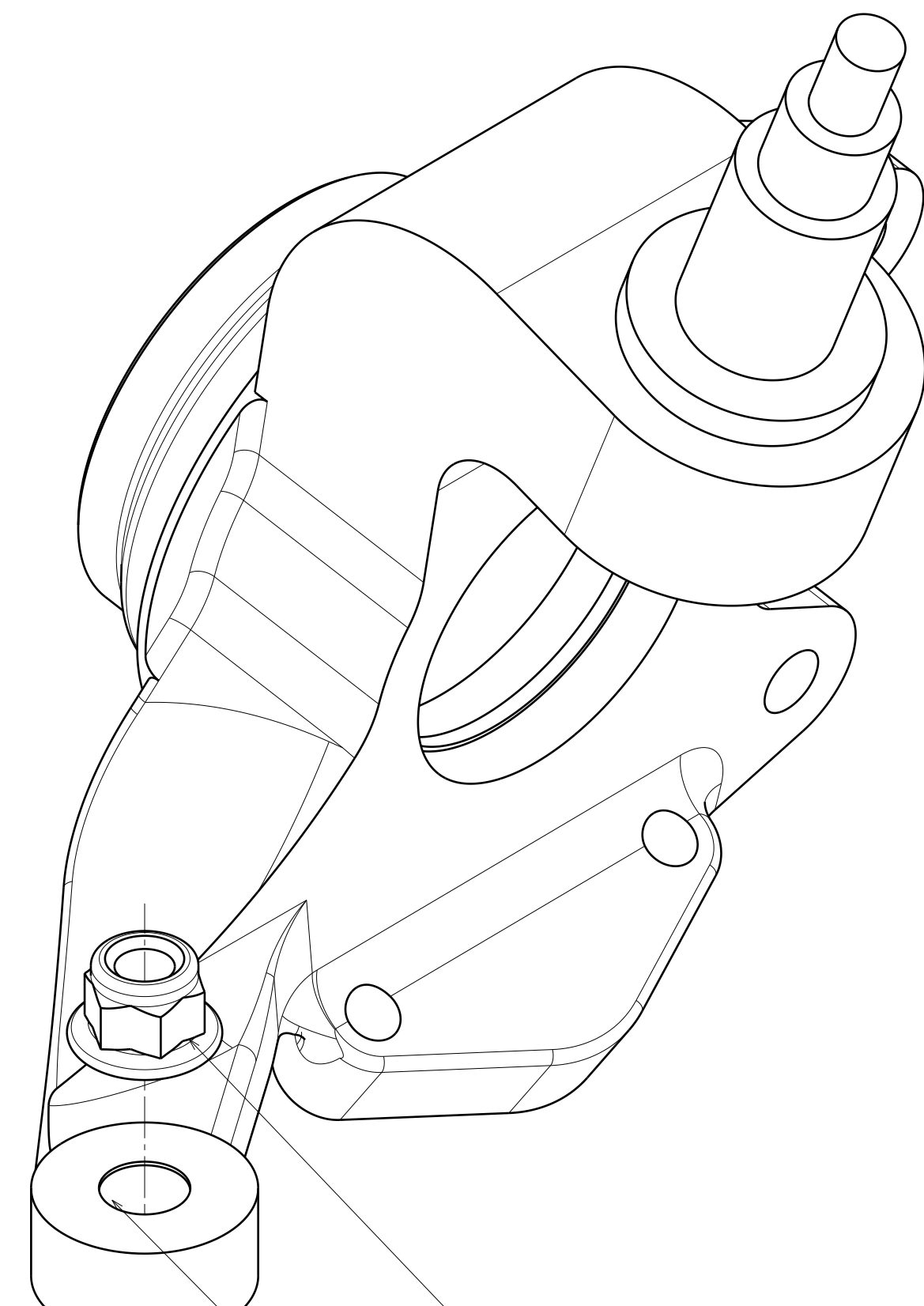
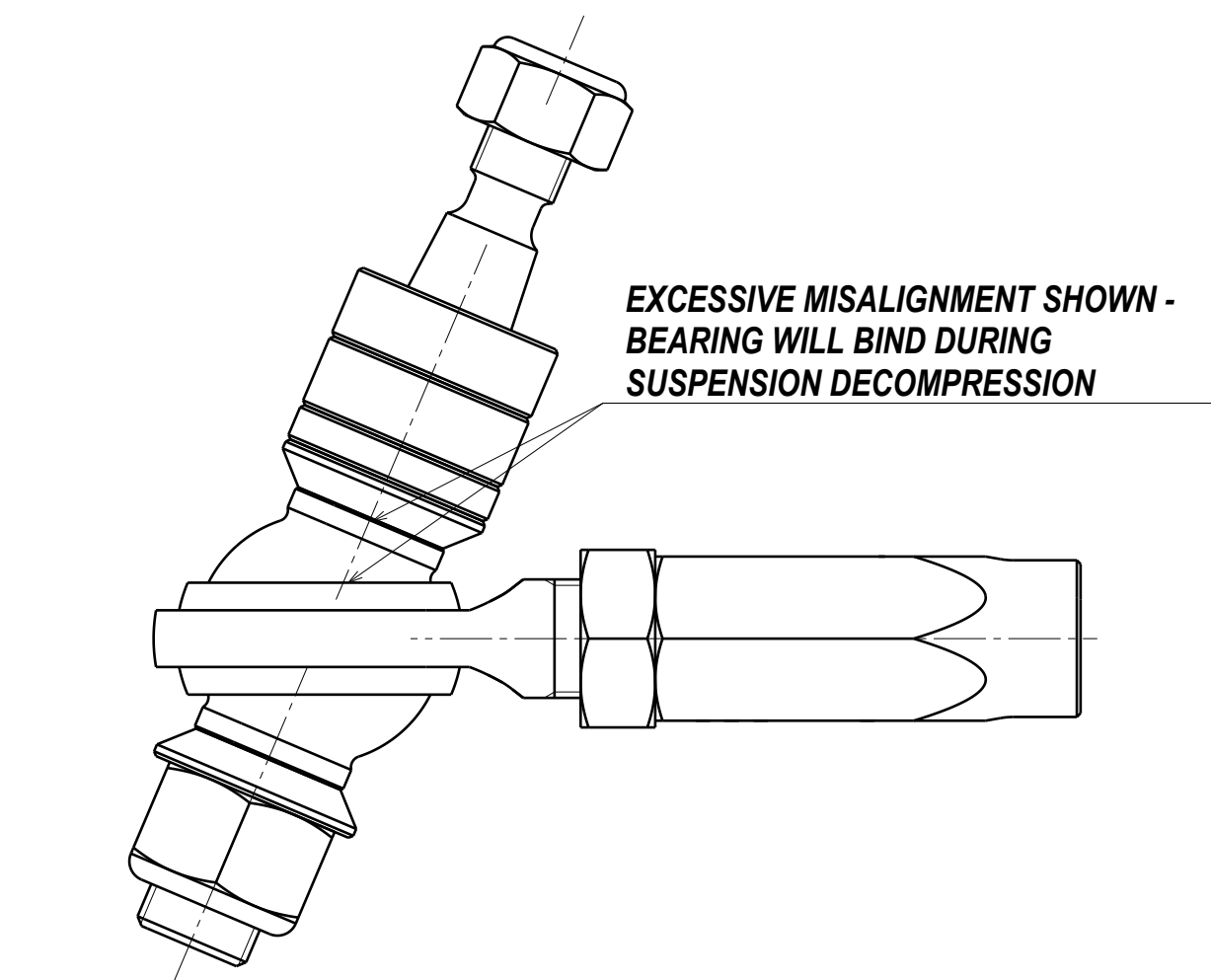
CHECK FOR ROD END BEARING MISALIGNMENT. AFTER TIGHTENING THE ADJUSTING MECHANISM ROD END TO BE AS PARALLEL TO THE SPACERS AS POSSIBLE



EXCESSIVE MISALIGNMENT SHOWN - BEARING WILL BIND DURING SUSPENSION COMPRESSION



EXCESSIVE MISALIGNMENT SHOWN - BEARING WILL BIND DURING SUSPENSION DECOMPRESSION



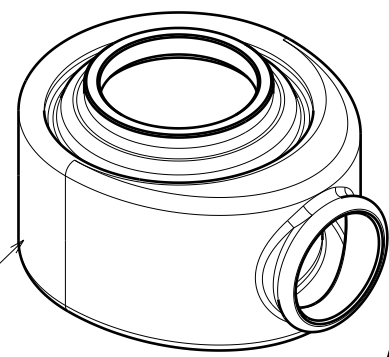
2. ATTACH TIE ROD SHAFT TO THE KNUCKLE AND TIGHTEN NUT TO 70 Nm (50 lb-ft)

1. TAPERED HOLE TO BE CLEANED BEFORE INSTALLATION

INSTALLATION SPACER

OUTER TIE ROD SHAFT CAN BE CUT SHORTER FOR MORE WHEEL CLEARANCE

3. INSTALL ROD END DUST BOOT OVER ROD END (THREADED END TO GO THROUGH LARGER HOLE FIRST)



4. INSTALL SPACERS AND ROD END OVER TIE ROD SHAFT

7. TIGHTEN NUT TO 120 Nm (90 lb-ft)

6. INSTALL INNER TIE ROD THREAD ADAPTER

USE SHORT ADAPTER WHEN REQUIRED

INSTALLATION SPACER

5mm SPACER

10mm SPACER

10mm SPACER

9. TIGHTEN NUT TO 40 Nm (30 lb-ft)

8. INSERT INNER TIE ROD

5. TIGHTEN NUT TO 90 Nm (65 lb-ft) WHILE HOLDING TIE ROD SHAFT IN PLACE WITH A HEX KEY (8mm)

SPACERS INCLUDED IN THE KIT TO ADJUST THE HEIGHT OF THE ROD END TO CORRECT BUMPSTEER. INSTALLATION SPACERS MUST ALWAYS BE USED.

