

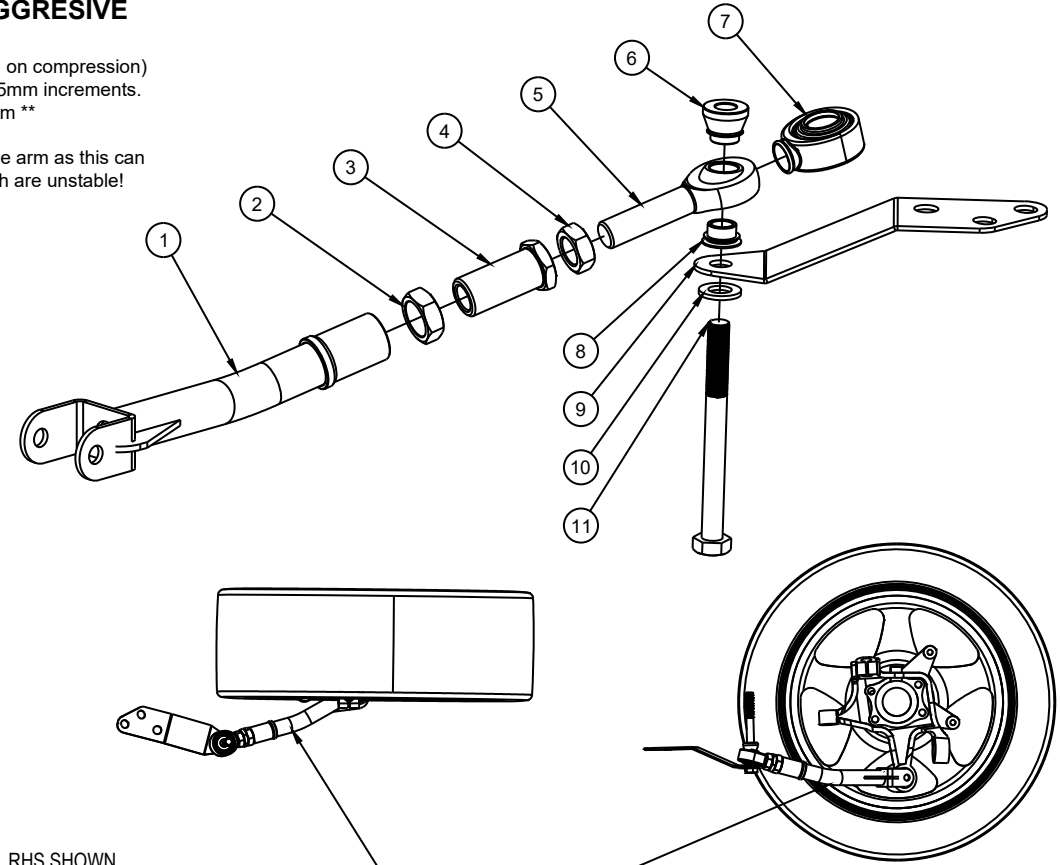
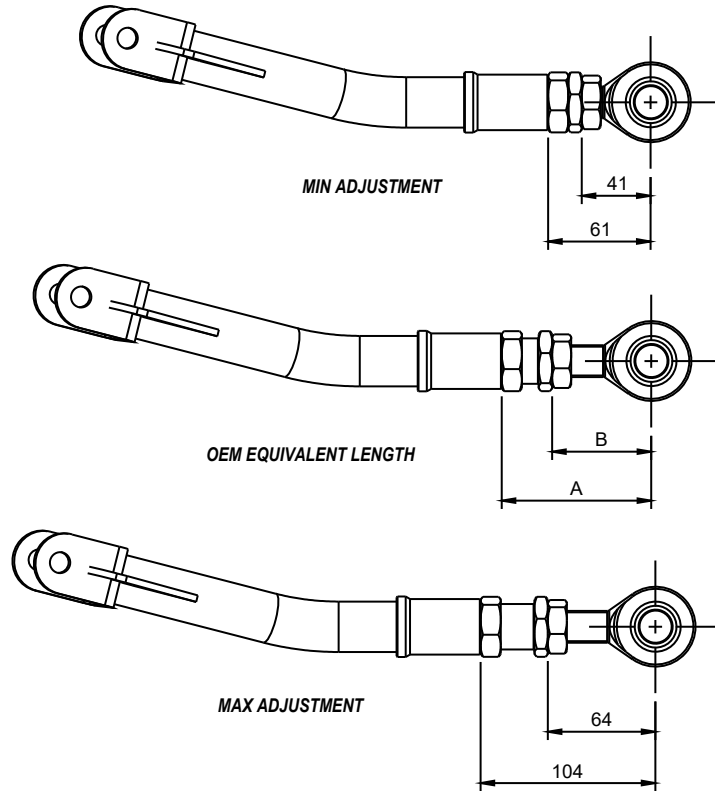
OEM Equivalent Length		
Ride Height	A	B
OEM	74mm	47mm
-25mm (1")	84mm	51mm
-50mm (2")	94mm	56mm

** OEM ride height is approx 370mm from wheel centre to top of guard**

SHORTER = MORE AGGRESSIVE

For more aggressive toe gain (toe in on compression) the arm length can be reduced in 5mm increments.
** Max reduction 10mm **

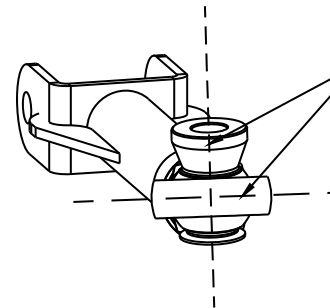
It is not recommended to extend the arm as this can give toe out characteristics which are unstable!



RHS SHOWN
ARM TO BEND DOWN FROM SUBFRAME
AND AWAY FROM WHEEL TO ENSURE
CORRECT CLEARANCE

CRITICAL!

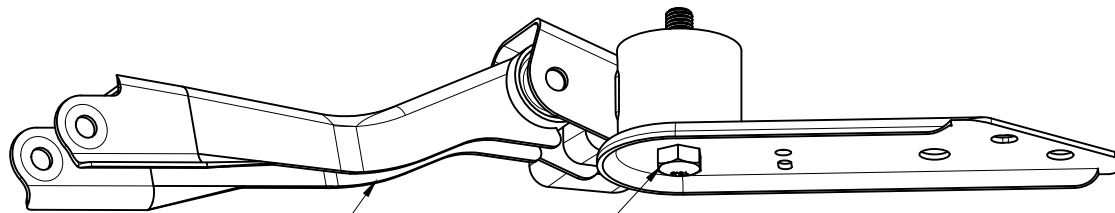
CHECK ROD END BEARING ALIGNMENT
AFTER TIGHTENING THE ADJUSTERS
ROD END TO BE PERPENDICULAR TO SPACERS



6	1	Upper Spacer			
5	1	PCML12TES	11	1	M14 x 1.5 x 150 Bolt
4	1	3/4-16 THIN NUT	10	1	M14 Washer
3	1	VERNIER SLEEVE M27x2	9	1	Traction Arm Brace
2	1	M27x2 JAM NUT	8	1	Lower Spacer
1	1	Traction Arm Main Body	7	1	PCML12T BOOT
Item	Qty	Part Name	Item	Qty	Part Name
Parts List			Parts List		

GT86-TRTN

2/2



1. REMOVE OEM TRACTION ARM

2. REMOVE OEM SUBFRAME BOLT

3. INSTALL GK TRACTION ARM AND SPACERS IN ORDER SHOWN

Large spacer on TOP side

27mm HEX

30mm HEX

32mm HEX

OEM BRACKET IS RETAINED

7. INSTALL AND TIGHTEN OEM BOLTS TO 110Nm (81ft.lbs)

5. TIGHTEN BOLTS TO 70Nm (52ft.lbs)

4. INSTALL BOLT HAND TIGHT

6. TIGHTEN BOLT TO 145Nm (107ft.lbs)

CRITICAL!

CHECK ARM CLEARANCE TO BRACKET AT FULL SUSPENSION COMPRESSION IF REQUIRED, CLEARANCE BRACKET

