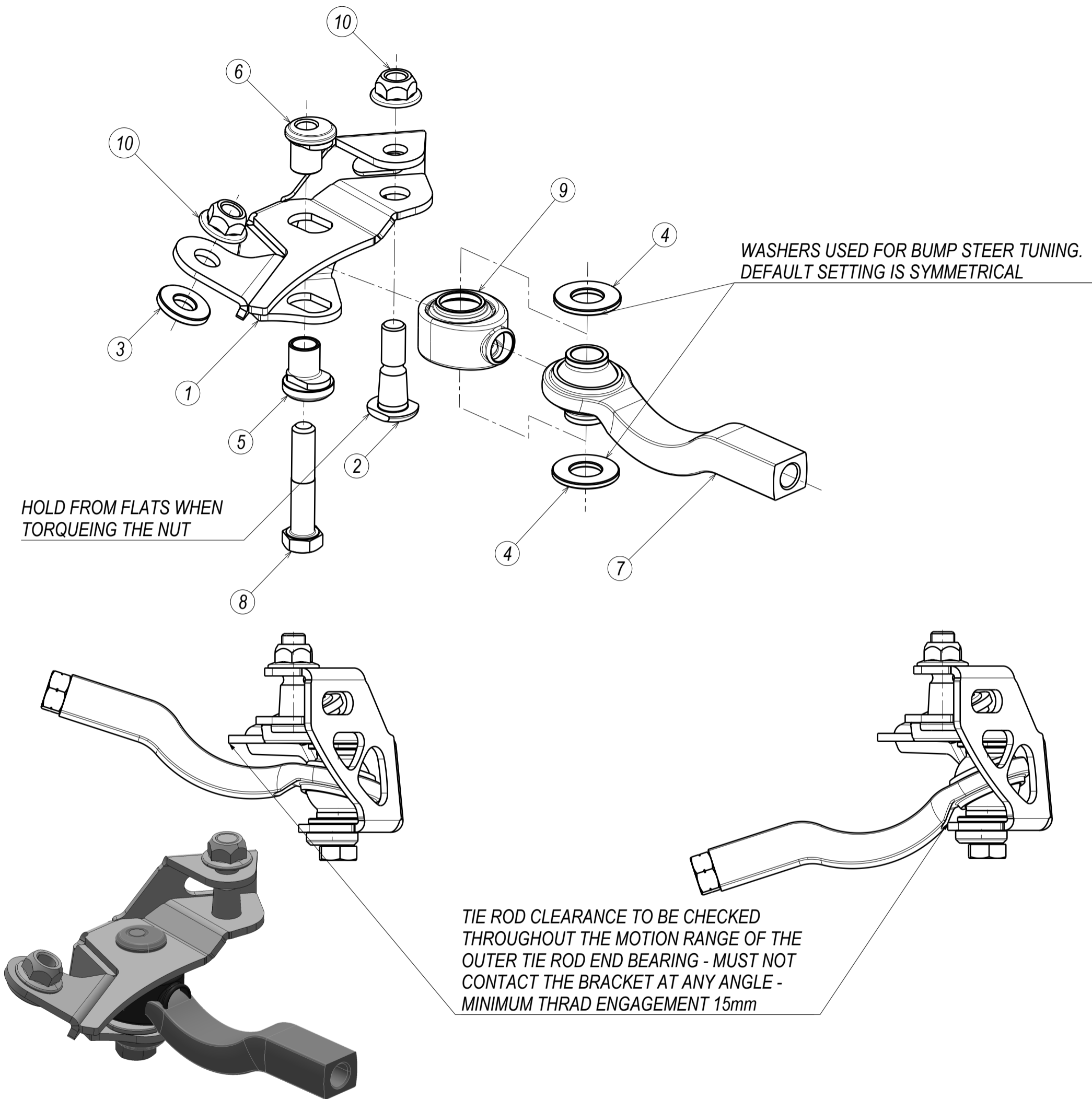


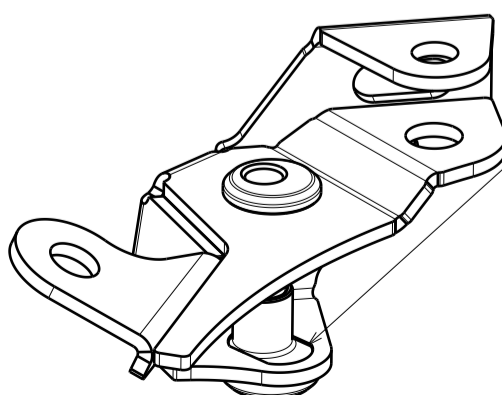
GT86-SSTR



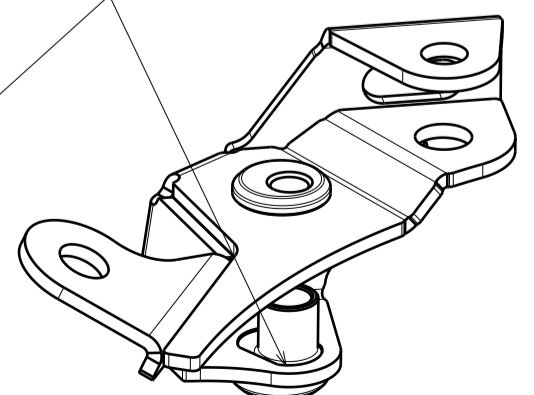
10	ISO 7044 M12x1.25	2
9	PCML10T BOOT	1
8	ISO 4014 BOLT M12x1.5x60	1
7	M14x1.5x145 TIE ROD - CURVED	1
6	STEERING BRACKET BOTTOM SPACER	1
5	STEERING BRACKET TOP SPACER	1
4	WASHER 16x30x3	2
3	WASHER M12x28x4	1
2	GT86 STEERING BRACKET TIE ROD STUD	1
1	GT86 STEERING BRACKET BODY R/H	1
PC NO	COMPONENT NAME	QTY

TIE ROD CAN BE POSITIONED MORE INSIDE OR OUTSIDE

INNER TIE ROD ADJUSTMENT IS 4 FULL TURNS TO COMPENSATE



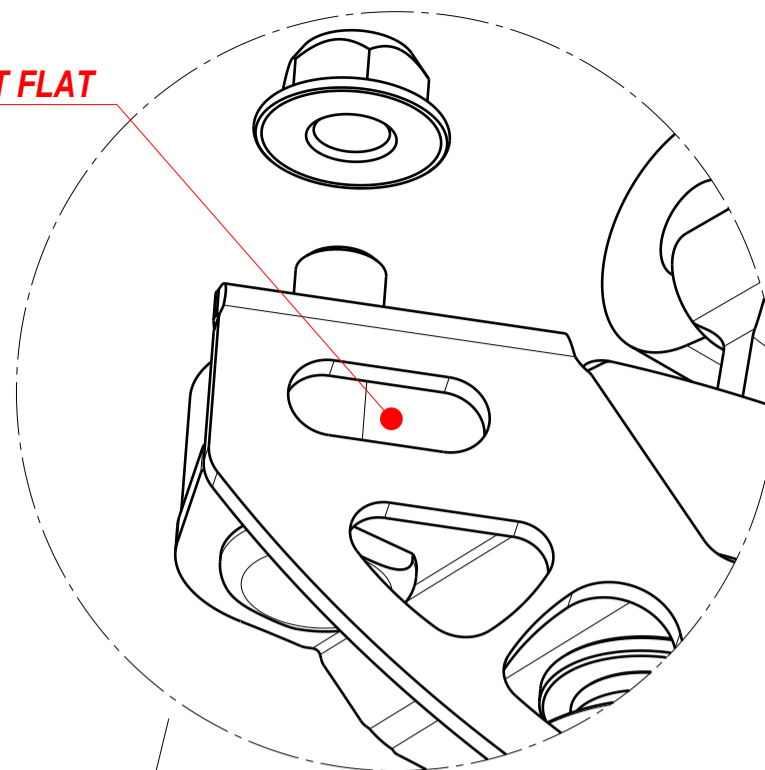
OUTSIDE POSITION - LESS ACKERMANN STEERING ANGLE



INSIDE POSITION - MORE ACKERMANN STEERING ANGLE

GT86-SSTR

1. REMOVE KNOB BY GRINDING IT FLAT



8. NUT TO 51 Nm (37 lbf-ft)
18mm HEX

2

7. INSTALL TIE ROD STUD (2)

4. INSTALL DUST BOOT OVER ROD END

10. ADJUST TOE

11. TIGHTEN TO 88 Nm (65 lbf-ft) 19mm HEX

5. APPLY MEDIUM STRENGTH THREAD
LOCK (LOCTITE 243) AND TIGHTEN BOLT
TO 90 Nm (65lbf-ft). 18mm HEX

6. INSTALL SPACER (3), TIE ROD BRACKET (1),
APPLY MEDIUM STRENGTH THREAD LOCK
AND FINGER TIGHTEN THE NUT

2. REMOVE OUTER TIE ROD

3. REMOVE BOTTOM A-ARM BALL
JOINT NUT

9. TIGHTEN THE NUT TO 51Nm (37 lbf-ft)
18mm HEX

