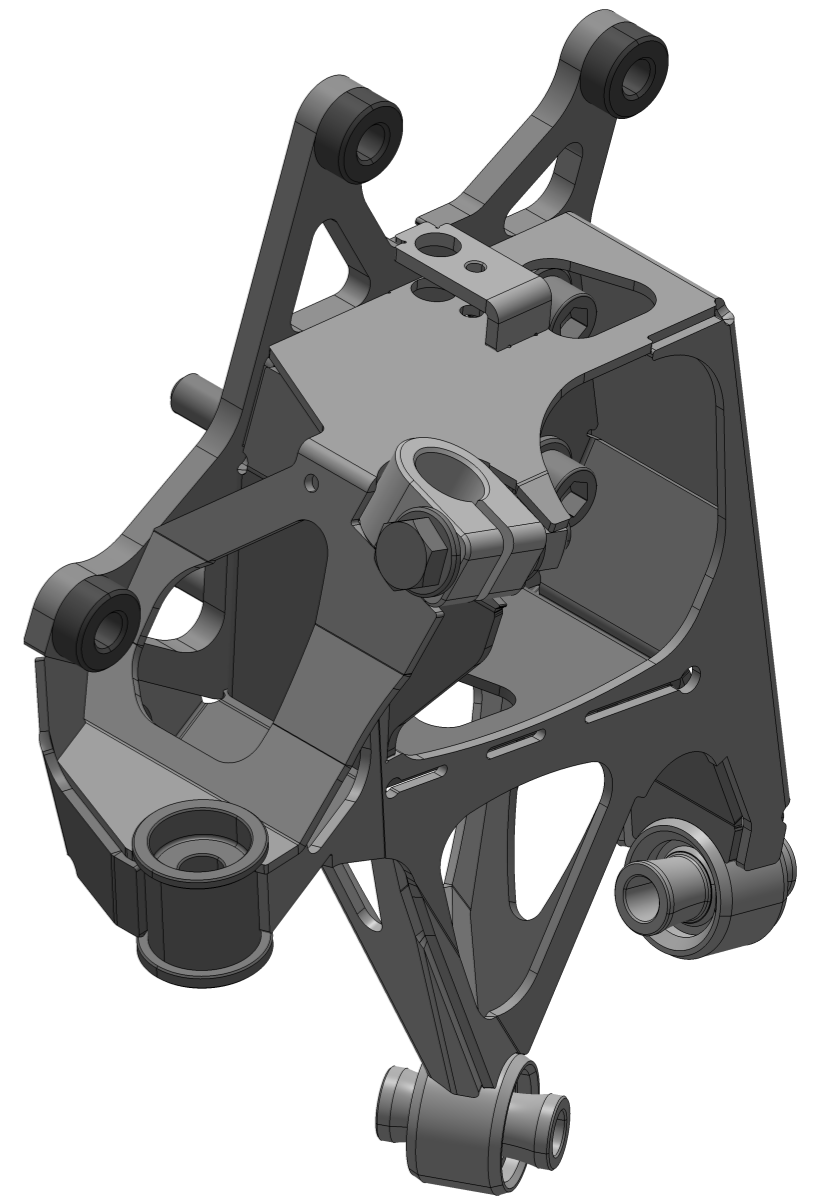
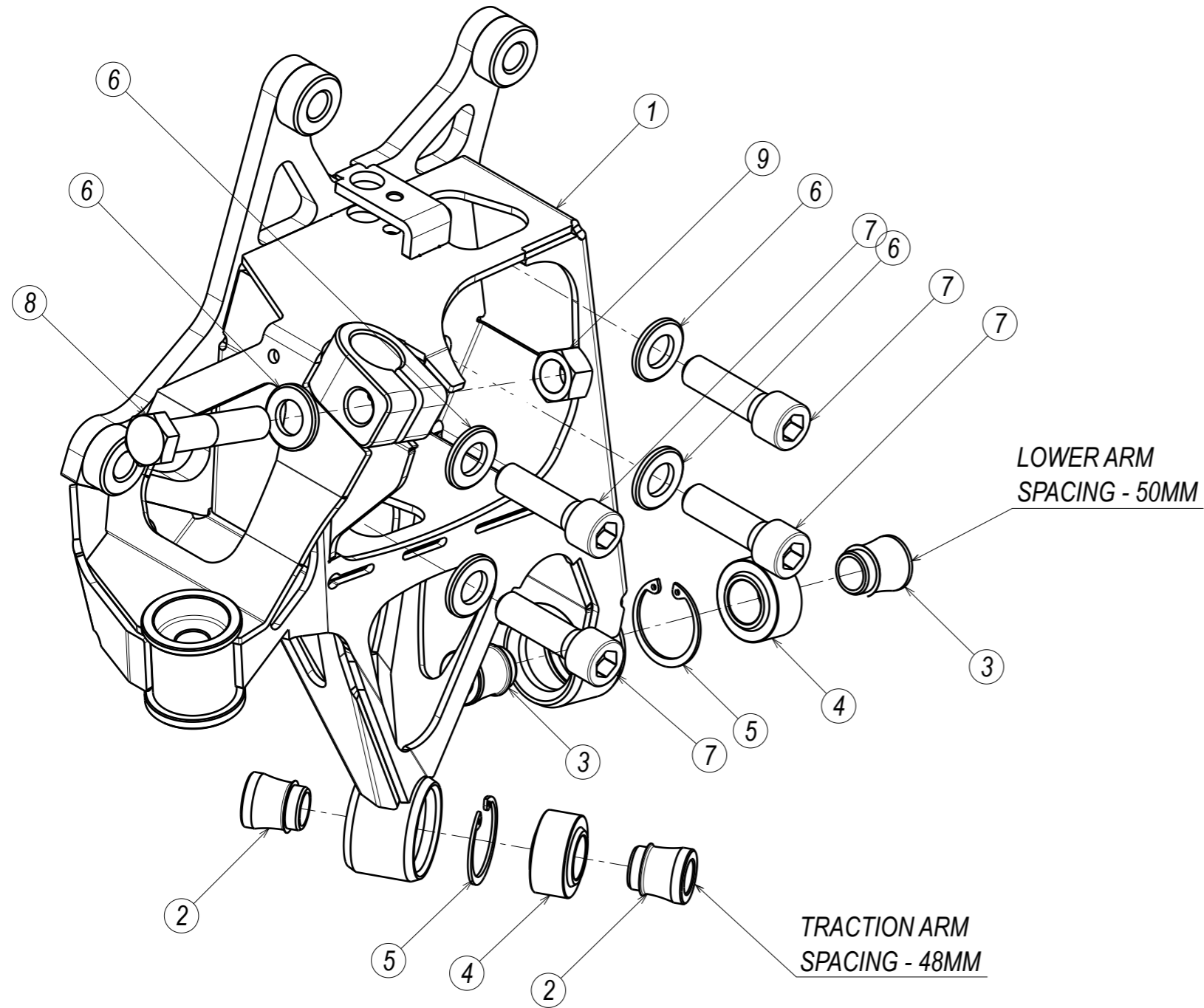


GT86-KNCK 1/2



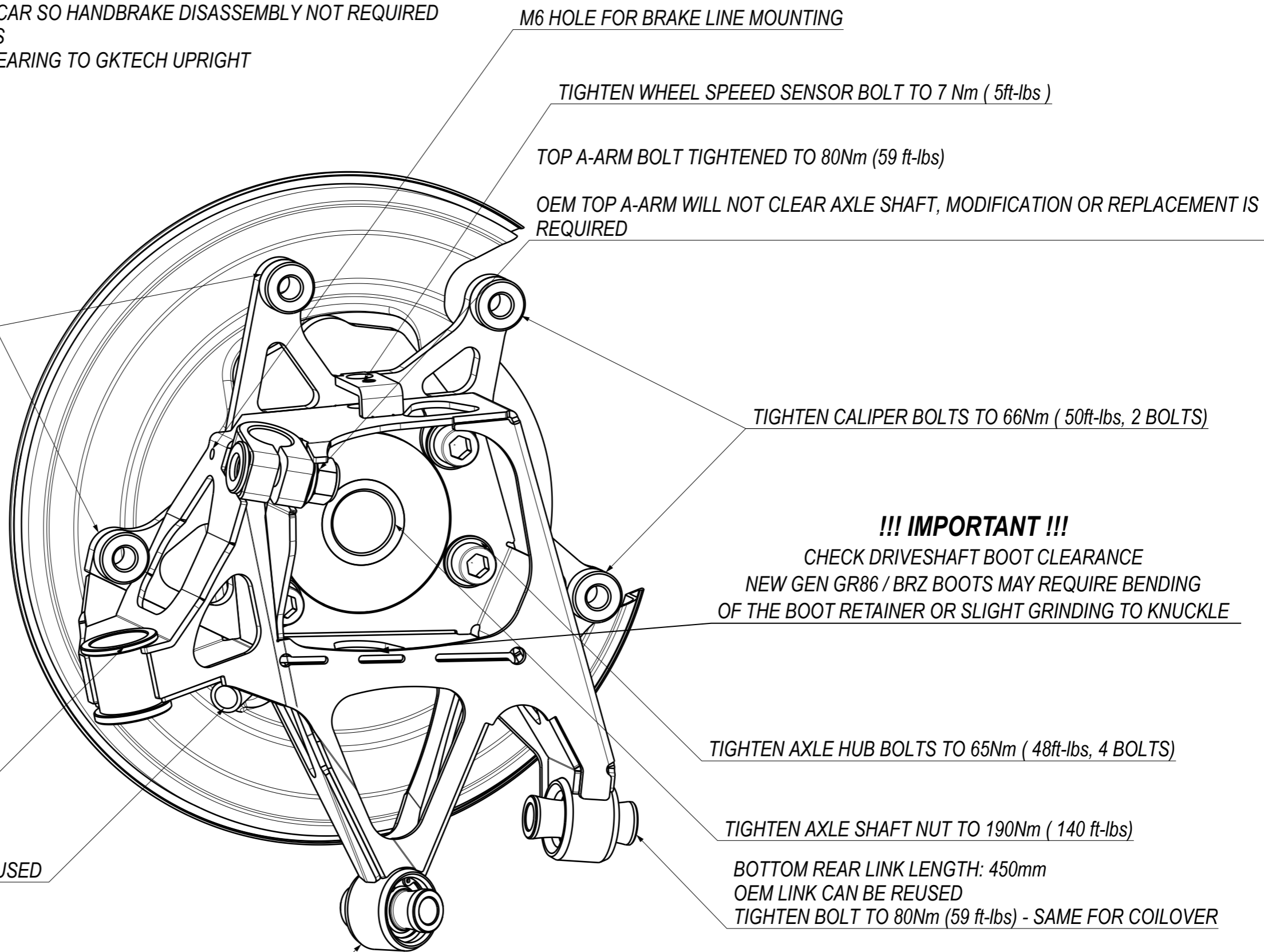
9	DIN 985-8 M12x1.75-10 NYLON LOCKING NUT	1
8	ISO 4014 BOLT M12x55 STEEL GRADE A HEXAGON HEAD 10.9	1
7	ISO 4762 M12x1.25x40 STEEL HEXAGON SOCKET HEAD CAP 10.9	4
6	ISO 7089 12x24 STEEL WASHER GRADE A PLAIN ZN HOT	7
5	RETAINING RING DIN 472 30x1.2	2
4	QA1 SPHERICAL BEARING COM10T	2
3	HIGH MISALIGNMENT SPACER M12x15,8x50	2
2	HIGH MISALIGNMENT SPACER M12x15,8x48	2
1	GT86 REAR UPRIGHT - WELDING ASSEMBLY R/H	1
PC NO	COMPONENT NAME	QTY

GT86-KNCK 2/2

SUGGESTED ORDER OF INSTALLATION:

1. REMOVE OEM UPRIGHT
2. LEAVE HANDBRAKE PLATE ATTACHED TO CABLE ON CAR SO HANDBRAKE DISASSEMBLY NOT REQUIRED
3. TRIM HANDBRAKE PLATE IF RUNNING DUAL CALIPERS
4. INSTALL OEM HANDBRAKE PLATE AND WHEEL HUB BEARING TO GKTECH UPRIGHT
5. INSTALL AXLE SHAFT TO AXLE HUB BEARING
6. INSTALL TOP A-ARM
7. CONNECT TOE LINK
8. CONNECT BOTTOM FRONT LINK (TRACTION ARM)
9. CONNECT BOTTOM REAR LINK (CAMBER ARM)

SECONDARY CALIPER FITTING OPTION
 BRAKE DUST SHIELD WILL REQUIRE TRIMMING WHEN
 USING DUAL CALIPERS
 TIGHTEN CALIPER BOLTS TO 66Nm (50ft-lbs, 2 BOLTS)



*ARM LENGTHS GIVEN FOR 0 STATIC
 ALIGNMENT WITH RIDEHEIGHT MEASURED
 FROM LOWER REAR LINK (CAMBER ARM)
 BOLT CENTER FROM GROUND: 153mm

ALIGNMENT	CAMBER ANGLE	TOTAL TOE IN
RACING	-2°..-3°	0..2mm
DRIFTING	0°..-0,5°	2..10mm