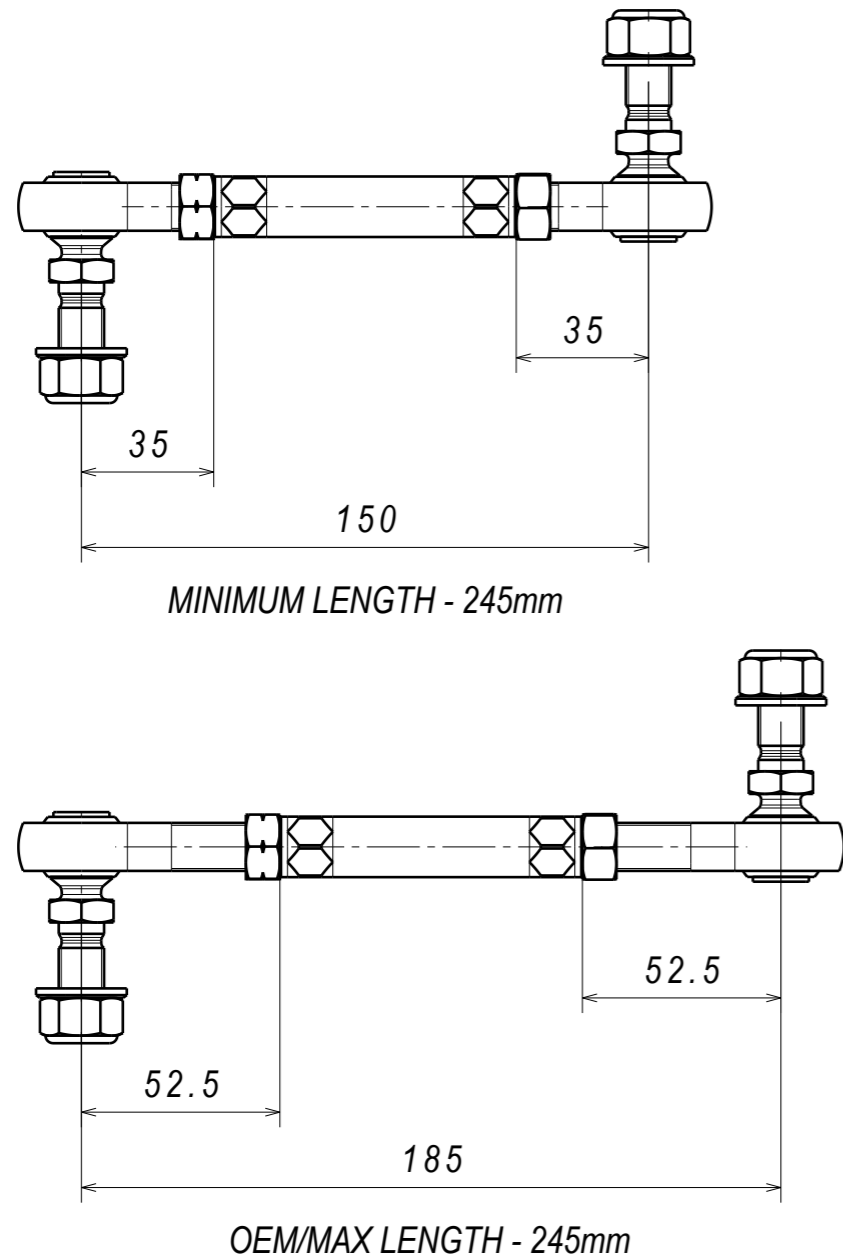


GT86-FELS



STEP 6. TIGHTEN TO 90 Nm (65 lbf-ft)

DISCONNECT END LINK FROM COILOVER WHEN ADJUSTING CORNER WEIGHTS AS END LINK LENGTHS WILL DIFFER BETWEEN THE SIDES OF THE CAR

STEP 4. MOUNT END LINK TO COILOVER AND CHECK FOR ROD END MISALIGNMENT

STEP 7. TIGHTEN TO 105 Nm (75 lbf-ft)

STEP 3. ADJUST LENGTH - LOWERED CARS WILL REQUIRE SHORTER LINKS

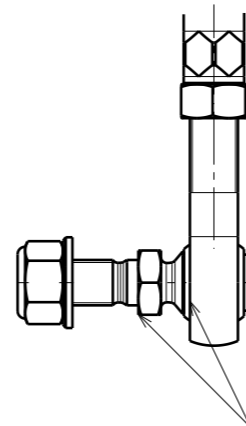
STEP 8. TIGHTEN TO 105 Nm (75 lbf-ft) AND CHECK THAT ROD END IS PARALLEL

STEP 2. INSTALL NEW END LINKS TO ANTI-ROLL BAR

STEP 1. REMOVE PREVIOUS END LINKS

STEP 5. TIGHTEN TO 90 Nm (65 lbf-ft)

7	DIN 985-8 M12x1.25-10 NYLON LOCKING NUT 8.8	2
6	ISO 7089 WASHER 12x24 STEEL GRADE A PLAIN ZN HOT	2
5	XML8-M12 STUD ROD END	1
4	XMR8-M12 STUD ROD END	1
3	JAM NUT 1/2-20 UNF L/H THREAD	1
2	JAM NUT 1/2-20 UNF R/H THREAD	1
1	GT86 FRONT END LINK ROD - SHORT	1
PC NO	COMPONENT NAME	QTY



CRITICAL!

CHECK FOR ROD END BEARING ALIGNMENT AFTER TIGHTENING THE ADJUSTING MECHANISM
ROD END TO BE PARALLEL WITH MOUNTING SURFACE