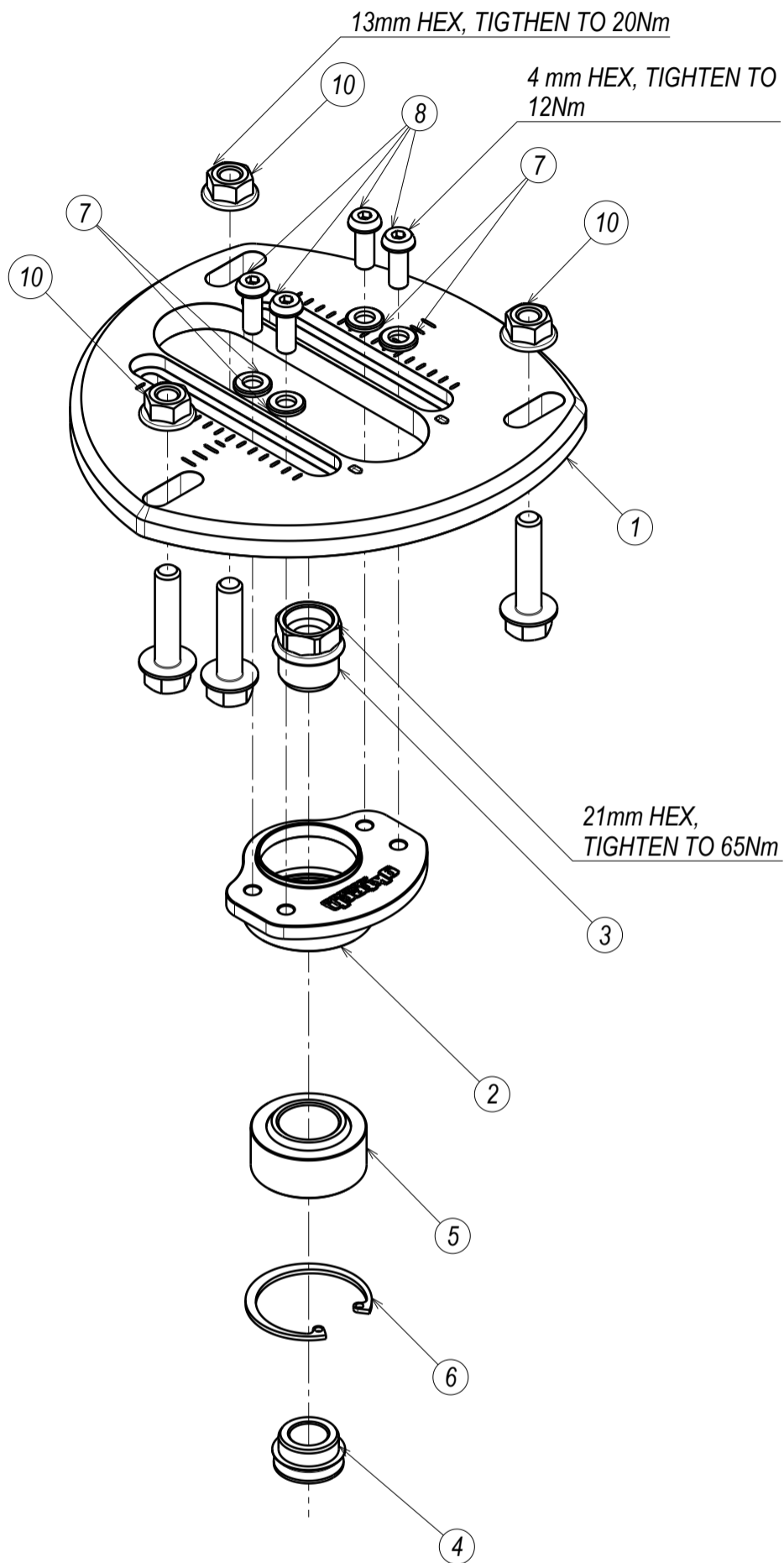


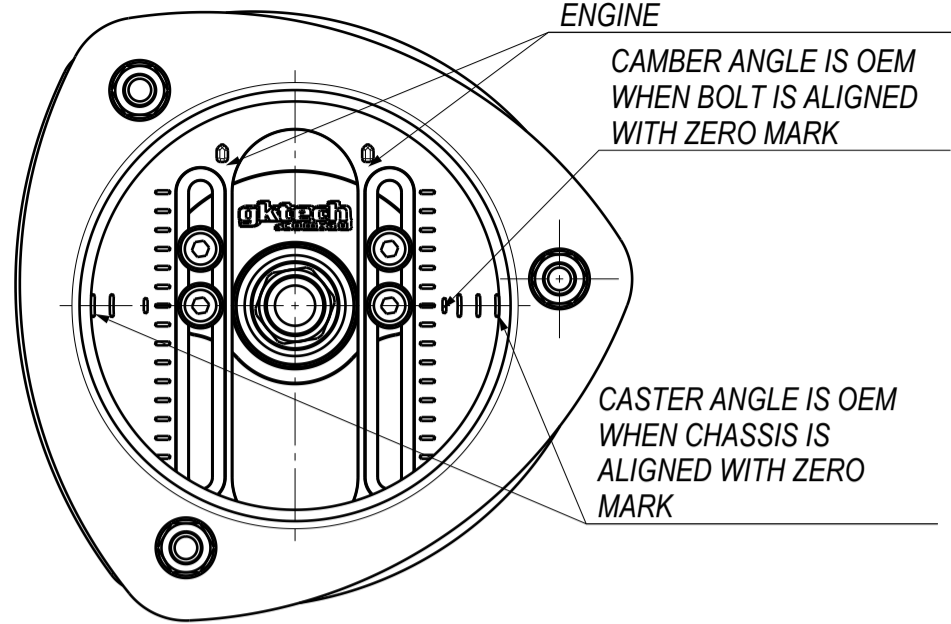
GT86-DTOP 1/2



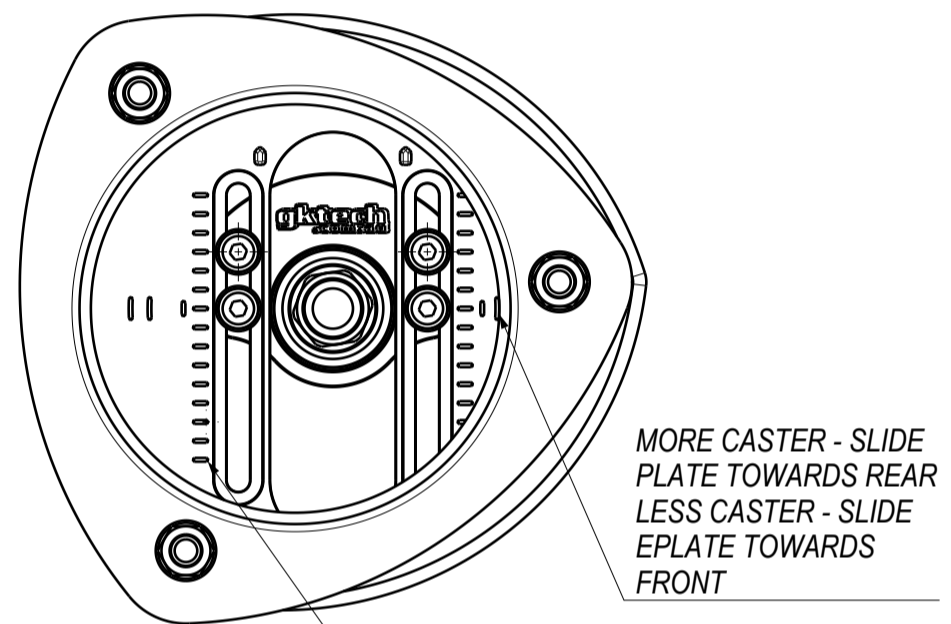
CASTER ANGLE FROM CENTER POSITION CAN BE INCREASED BY 0,5° AND DECREASED BY 1,0°

CAMBER ANGLE FROM CENTER POSITION CAN BE INCREASED BY 3,0° AND DECREASED BY 4,7°

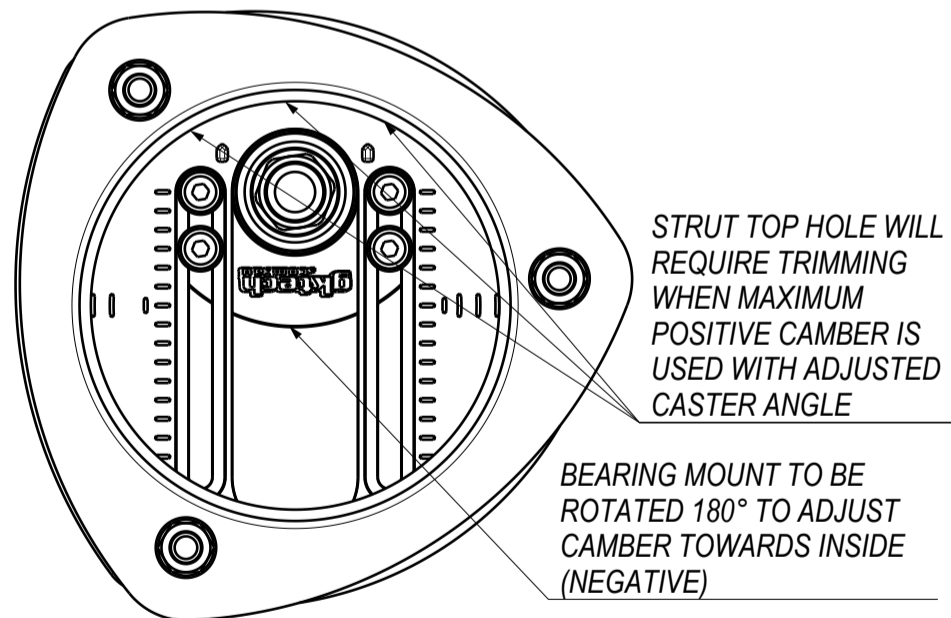
PC NO	COMPONENT NAME	QTY
1	GT86 DRIFT CAMBER PLATE - BASE PLATE R/H	1
2	GT86 CAMBER PLATE - BEARING HOUSING	1
3	COILOVER NUT - M12x1.25 FOR 3/4 ID BEARING	1
4	COILOVER TOP MOUNT SPACER - 12 x3/4 x 5.5	1
5	QA1 BEARING COM12T PTFE	1
6	RETAINING RING DIN 472 x 1.5	1
7	ISO 7089 6x12 WASHER STEEL GRADE A ZN HOT	4
8	ISO 7380 M6x16 STEEL 10.9 HEX HEAD CAP LOW	4
9	DIN 6921 M8x1.25x35 18-8 STAINLESS STEEL	3
10	ISO 4161NUT M8 FLANGED STEEL GRADE A HEXAGON 8.8 ZN	3



CAMBER PLATE - 0 POSITION



CAMBER ANGLE IS CHANGED BY 0,5° WHEN WASHER IS CONCENTRIC WITH NEXT GROOVE



CAMBER PLATE - MAX NEGATIVE CAMBER

