

GT86-CNSL / GT86-CNSR

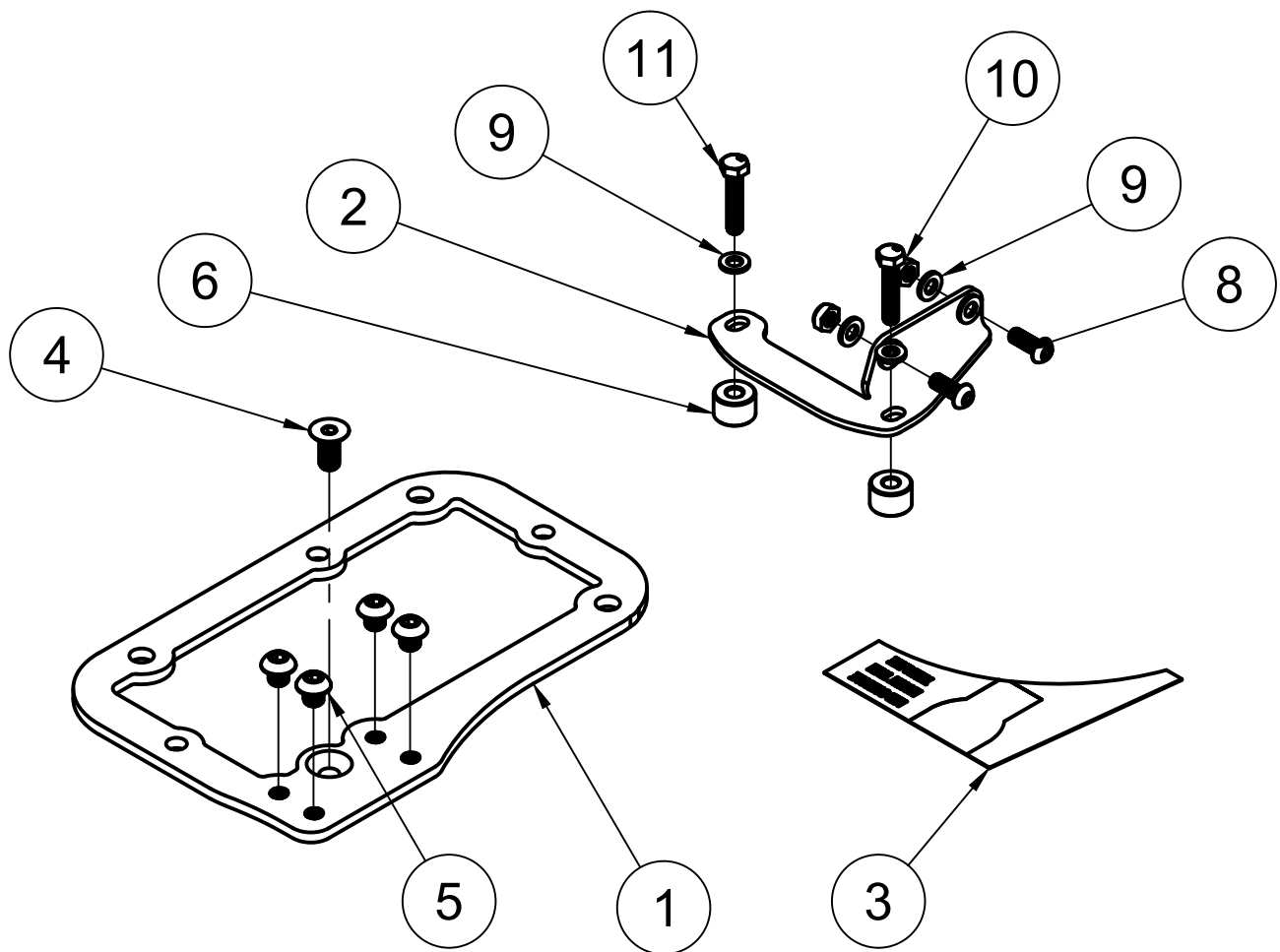


DIAGRAM A

10	2	M6 LOCKNUT
9	6	M6 WASHER
8	2	M6 x 16 SCREW
7	2	M6 x 30 SCREW
6	2	CONSOLE BRACKET SPACER
5	4	M8 x 8 BUTTON HEAD SCREW
4	1	M8 x 18 COUNTERSUNK SCREW
3	1	DOUBLESIDED CONSOLE TRIM TEMPLATE
2	1	CENTRE CONSOLE ADAPTER BRACKET
1	1	LHD / RHD HANDLE MOUNTING BRACKET
ITEM:	QTY:	DESCRIPTION:
PARTS LIST:		

GT86-CNSL / GT86-CNSR

1. PRIOR TO CONSOLE DISASSEMBLY, USE THE PROVIDED TEMPLATE TO MARK CROSSHATCHED LEVER HOLE SECTION ON TO THE CONSOLE. TEMPLATE IS DOUBLESIDED FOR LHD/RHD.

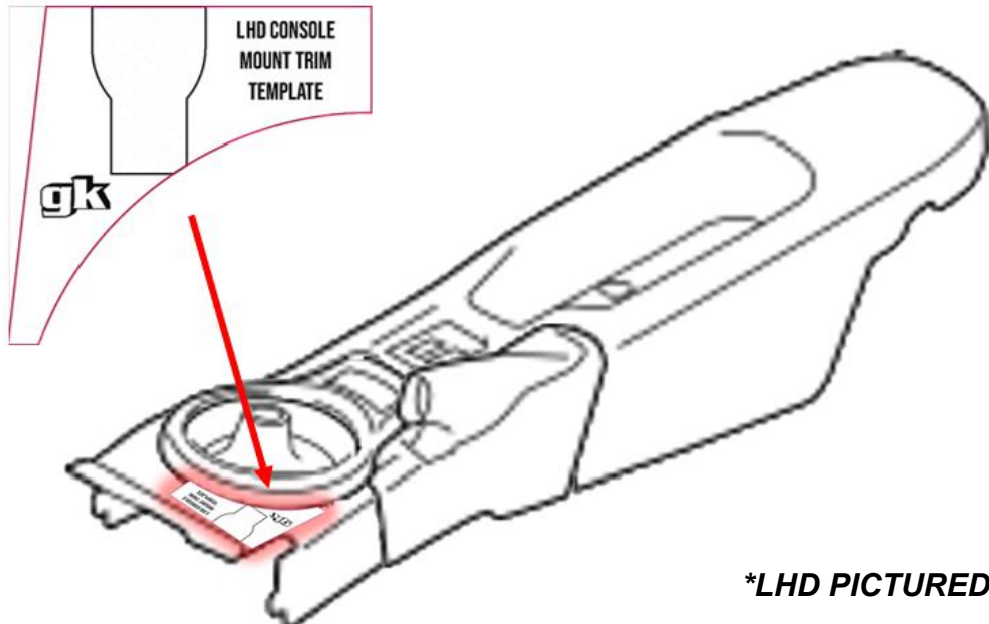


DIAGRAM B

2. REMOVE TRIMS AND CENTRE CONSOLE.

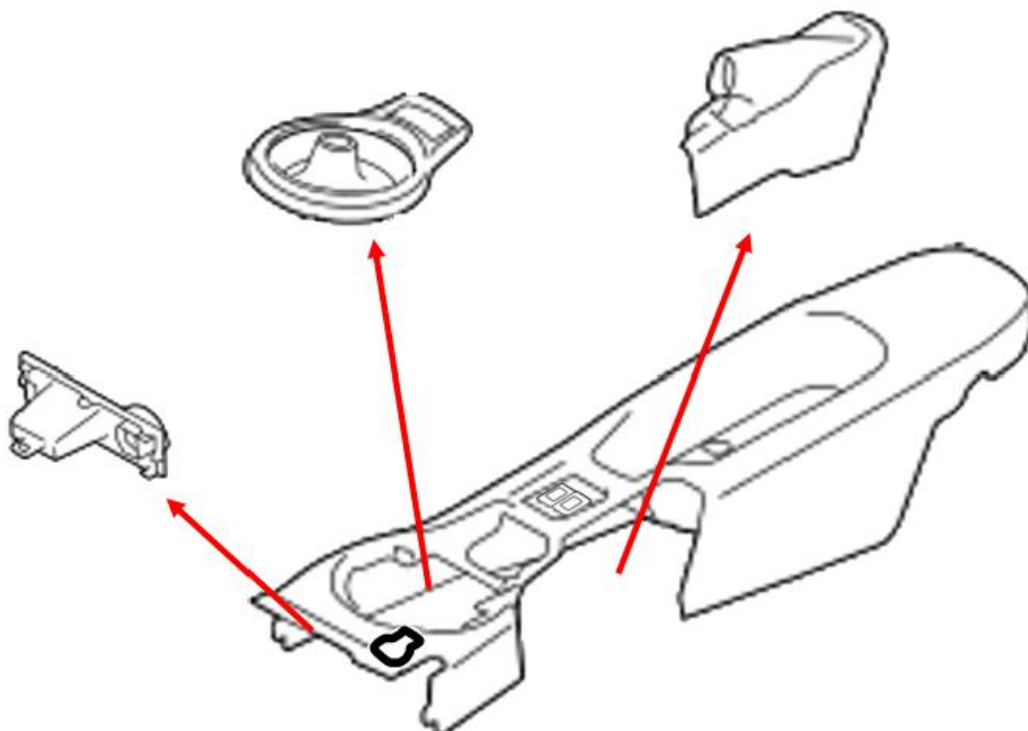


DIAGRAM C

GT86-CNSL / GT86-CNSR

3. REMOVE THE 4 BOLTS WHICH HOLD DOWN THE OEM SHIFTER BOOT AND THE UPPER SW PLATE.

PLACE THE UPPER SW PLATE ASIDE. THE HANDBRAKE MOUNTING PLATE WILL REPLACE THIS.

4. ****CRITICAL** (LHD ONLY)**
CUT OFF THE FRONT LEFT RUBBER TAB AT THE BASE OF THE OEM SHIFT BOOT. THIS WILL INTERFERE WITH THE HANDLE BRACKET ASSEMBLY. SEE DIAGRAM E.

5. INSTALL THE OEM SHIFT BOOT ON TO THE NEW HANDLE MOUNTING PLATE.

(TIP: PULL THE TABS THROUGH USING PLIERS RATHER THAN PUSHING)

6. PLACE THE COUNTERSUNK SCREW LOOSELY IN THE PROVIDED HOLE AND BOLT THE HANDLE BRACKET TO THE CONSOLE ADAPTER BRACKET. TORQUE AS SPECIFIED IN DIAGRAM D

7. BOLT THE CONSOLE ADAPTER BRACKET TO THE TRANSMISSION TUNNEL AND TORQUE AS SHOWN IN DIAGRAM D.

8. REFER TO UNIV-RHYD ASSEMBLY GUIDE FOR HANDLE AND CABLE INSTALLATION INSTRUCTIONS.

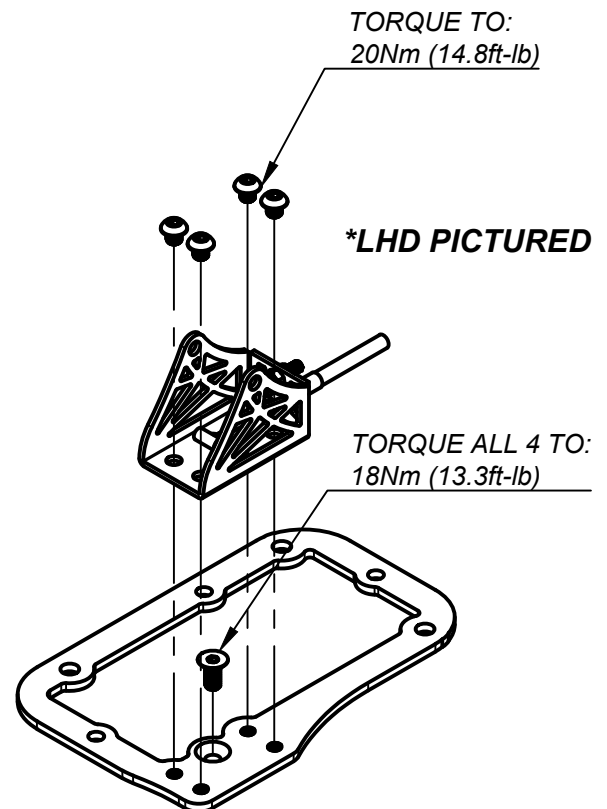


DIAGRAM D

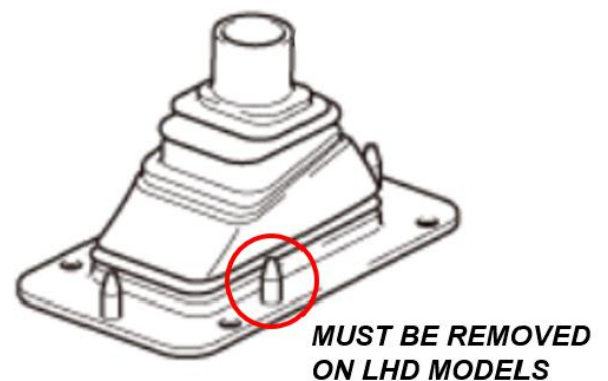
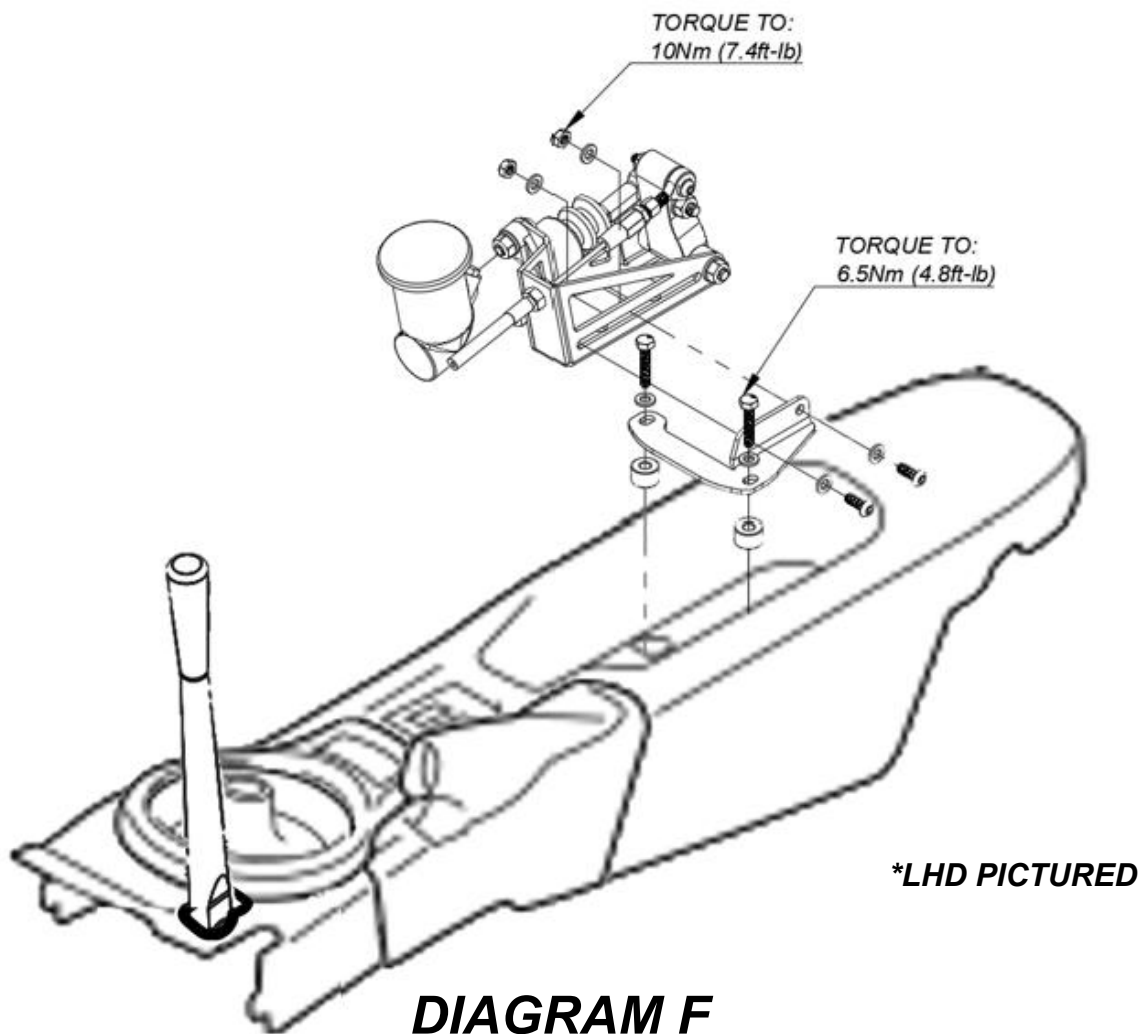


DIAGRAM E

GT86-CNSL / GT86-CNSR

- ONCE THE HANDLE POSITION IS FINALISED, TRIM THE CENTRE CONSOLE TO MATCH. THE TEMPLATE SHOULD BE VERY CLOSE HOWEVER IT IS IMPORTANT TO CUT MINIMALLY AND USE MANY TEST FITS.
- REINSTALL THE CENTRE CONSOLE AND ROUTE CABLE FROM THE HANDLE THROUGH TO THE CUPHOLDER AREA. THIS SHOULD BE ROUTED WITH AS MINIMAL BENDS AS POSSIBLE. IT IS RECOMMENDED TO REMOVE THE OEM CIG SOCKET AND USE THE EXISTING HOLE, HOWEVER DEPENDING ON YOUR SETUP AN ADDITIONAL HOLE MAY BE BENEFICIAL TO REDUCE CABLE BENDING.



- INSTALL THE MASTER CYLINDER BRACKET INTO THE CUPHOLDER AREA USING THE PROVIDED MOUNT AS SHOWN IN DIAGRAM F.
- ATTACH CABLE AND ADJUST ACCORDING TO THE INSTALLTION GUIDE INCLUDED WITH UNIV-RHYD.