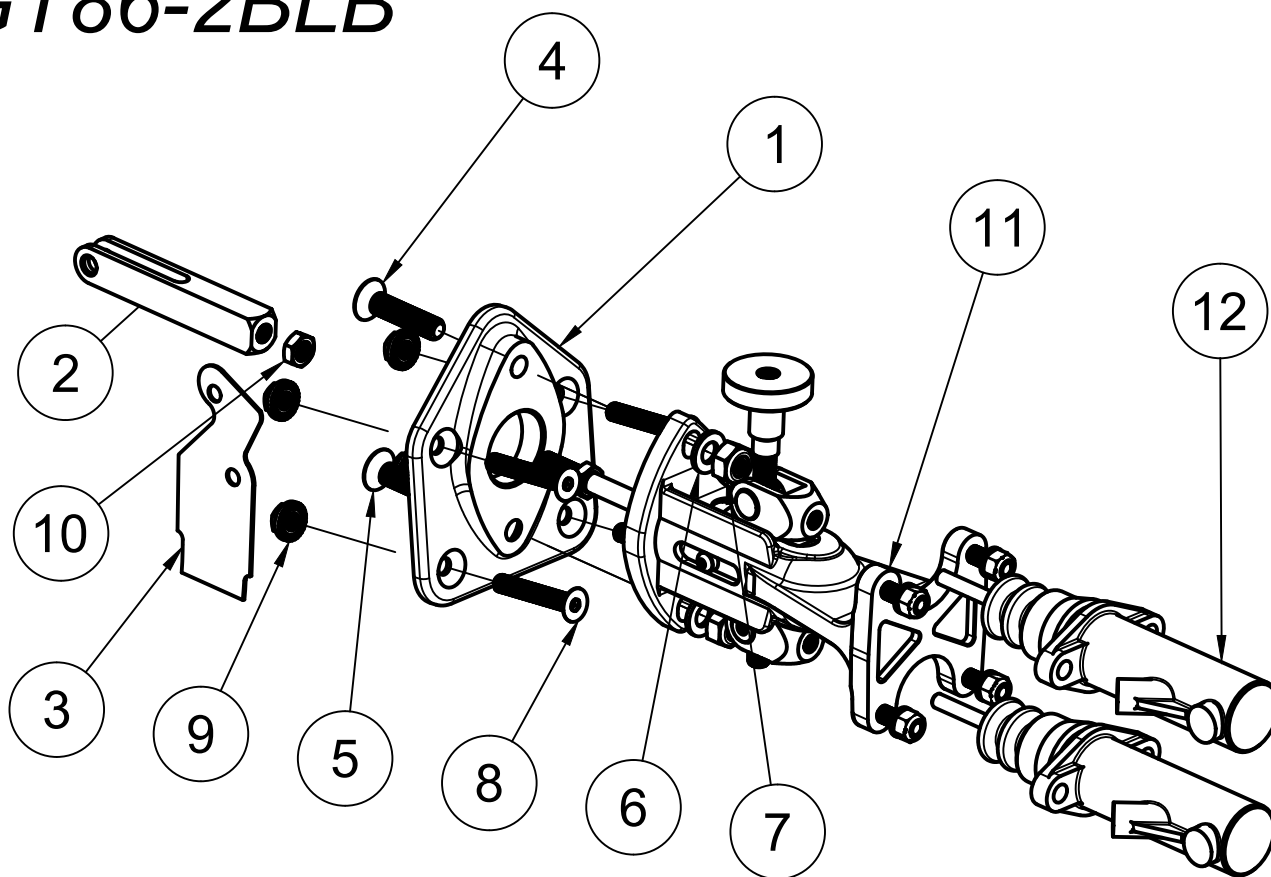


# GT86-2BLB



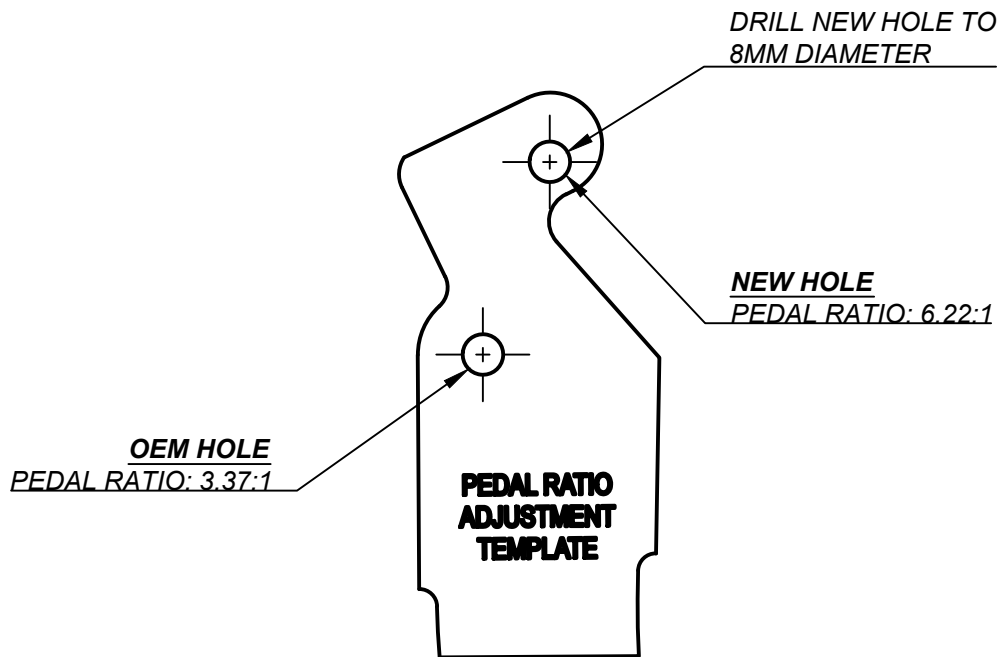
**DIAGRAM A**

1. REMOVE THE BRAKE PEDAL ASSEMBLY AND BRAKE BOOSTER ASSEMBLY FROM THE VEHICLE.

12	FLUX INLINE MASTER CYLINDERS	2
11	WILWOOD TANDEM MOUNT BALANCE BAR	1
10	3/8-24 THIN NUT	1
9	M8 FLANGE LOCK NUT	4
8	M8 x 50 COUNTERSUNK BOLT	4
7	M10 NYLOC NUT	2
6	M10 WASHER	2
5	M10 x 35 COUNTERSUNK BOLT	1
4	M10 x 45 COUNTERSUNK BOLT	1
3	GT86 PEDAL RATIO MODIFICATION TEMPLATE	1
2	GT86 ADAPTER CLEVIS	1
1	GT86 ADAPTER PLATE	1
<b>ITEM:</b>	<b>DESCRIPTION:</b>	<b>QTY:</b>
<b>PARTS LIST:</b>		

**\*\*CRITICAL\*\***  
 THE PEDAL ASSEMBLY WILL NEED TO BE MODIFIED TO CHANGE THE PEDAL RATIO TO WORK WITH A NON-BOOSTED BRAKE ASSEMBLY.

# GT86-2BLB



**DIAGRAM B**

2. ALIGN THE TEMPLATE ON TO THE BRAKE PEDAL AS SHOWN IN DIAGRAM B. ENSURE THAT THE OEM HOLE AND THE OUTER EDGES OF THE TEMPLATE MATCH THE BRAKE PEDAL. USE A CENTRE PUNCH TO MARK THE NEW HOLE LOCATION AND REMOVE THE TEMPLATE.
3. DRILL THE NEW HOLE TO 8MM DIAMETER. **DO NOT LET THE HOLE DIAMETER EXCEED 8MM.** THIS WILL CAUSE SLOP IN THE BRAKE PEDAL.
4. INSERT THE 4x M8 COUNTERSUNK BOLTS INTO THE ADAPTER PLATE. THEN, BOLT THE BALANCE BAR ASSEMBLY TO THE ADAPTER PLATE AND TIGHTEN.
5. BENCH BLEED BOTH MASTER CYLINDERS.
6. ASSEMBLE THE BALANCE BAR ASSEMBLY TO THE BRAKE PEDAL ON THE BENCH. INITIALLY, THREAD BOTH THE MASTER CYLINDERS EVENLY AND FULLY ON TO THE BALANCE BAR CLEVISSES. IN THE RELAXED POSITION, ADJUST THE PEDAL CLEVIS TO MATCH THE RATIO ADJUSTED PEDAL AND LOCK USING THE JAM NUT.
7. WHILE HOLDING THE BRAKE PEDAL IN POSITION IN THE FOOTWELL, GET SOMEONE TO INSERT THE BALANCE BAR ASSEMBLY FROM THE ENGINE BAY.
8. ALIGN THE CLEVIS TO THE ADJUSTED PEDAL RATIO HOLE. THE PEDAL RETURN SPRING MAY BE PUSHED UP BY THE CLEVIS AT THE NEW LOCATION.

INSERT THE PIN AND CLIP , THEN TIGHTEN ALL REMAINING BRAKE PEDAL NUTS. MAKE FINE ADJUSTMENTS USING THE MASTER CYLINDER SHAFTS TO TAKE UP ANY SLACK.

9. ATTACH BRAKE LINES AND BLEED THE BRAKES.