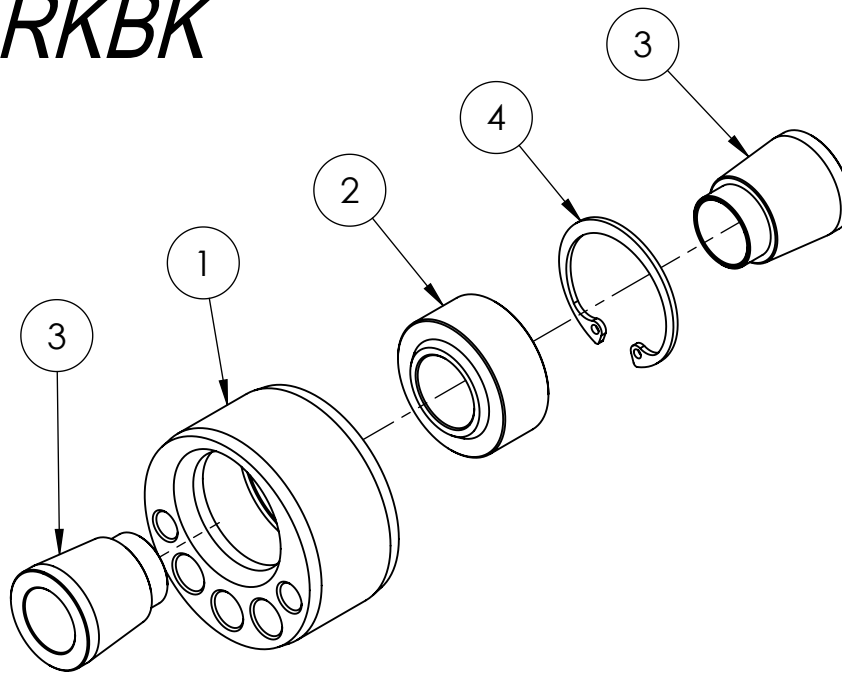


# F8XX-RKBBK



**DIAGRAM A**

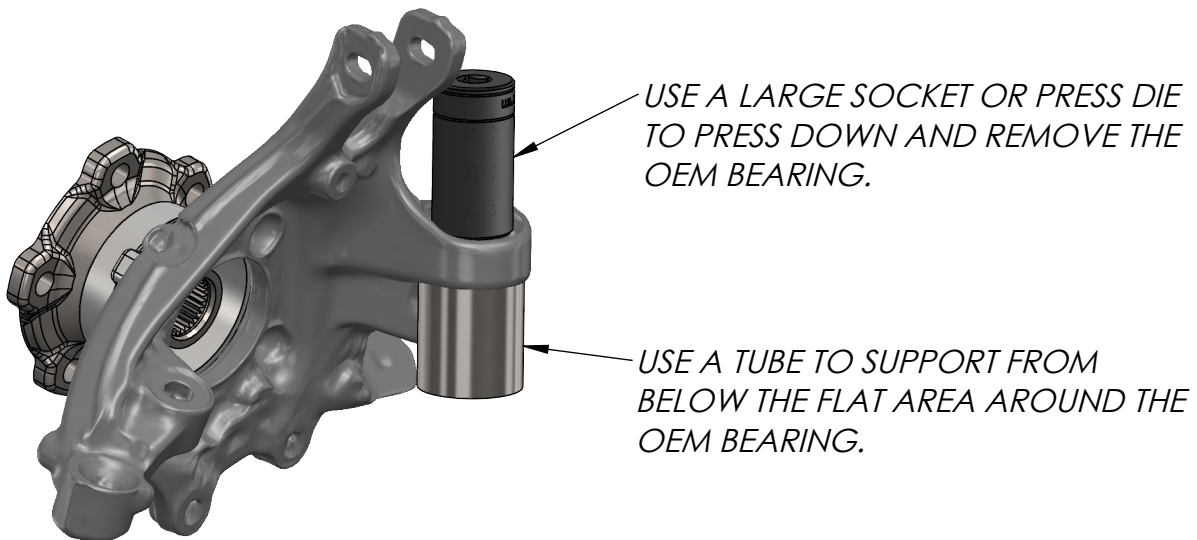
ITEM NO.	DESCRIPTION:	QTY:
1	ECCENTRIC BEARING HOUSING	2
2	COM10-T SPHERICAL BEARING	2
3	COM10-T SPACER 14ID 55W	4
4	DIN 472, Internal Retaining Ring	2

CATEGORY:	OEM	OEM LOWERED 50MM	GKTECH RKBBK LOWERED 50MM
STATIC CAMBER	-1.5°	-2.21°	-2.68°
ROLL MOMENT ARM	379mm	422mm	401mm

- *RKBBK ADDS NEGATIVE CAMBER FOR MORE AGRESSIVE ALIGNMENT.*
- *RKBBK REDUCES THE ROLL MOMENT ARM TO BE CLOSER TO THE OEM VALUE FOR LOWERED VEHICLES.*
- *A LOWER ROLL MOMENT ARM REDUCES VEHICLE ROLL.*

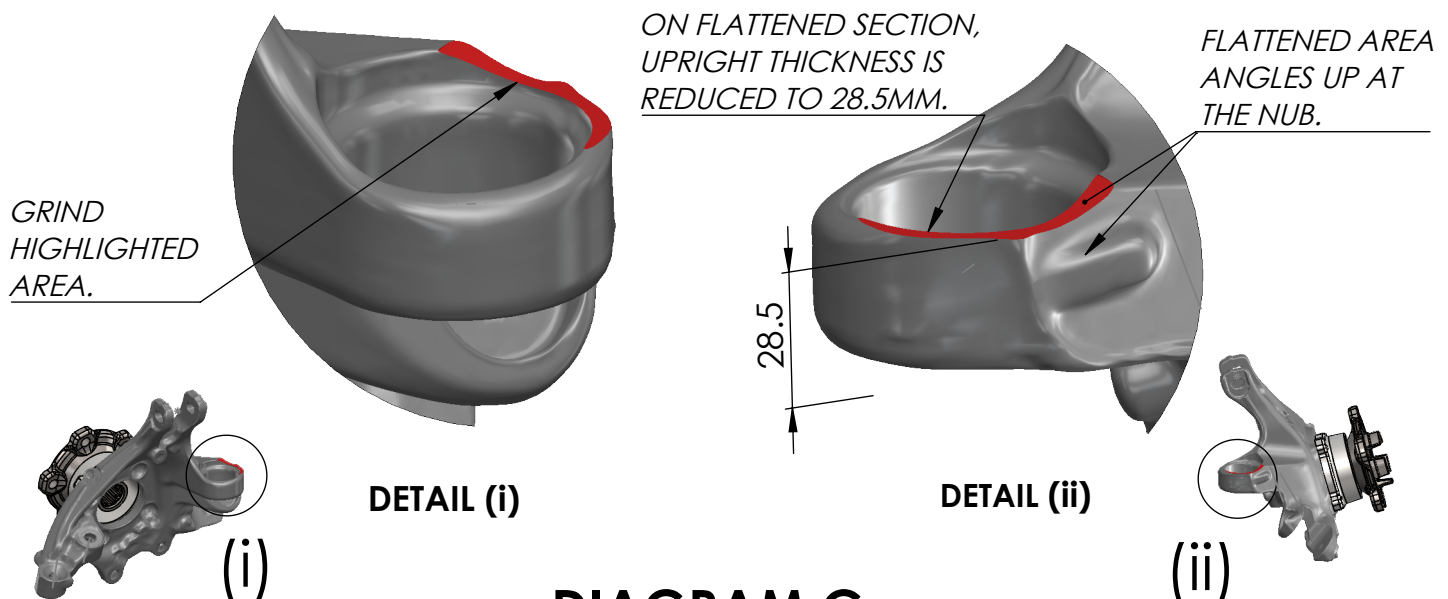
# F8XX-RKBK

1. REMOVE BOTH OF THE REAR UPRIGHTS.
2. REMOVE THE DUST SHIELDS AND HANDBRAKE ASSEMBLIES ALSO, AS THIS WILL HINDER ACCESS WHEN USING THE PRESS.
3. REMOVE THE REARWARD BOOT ON THE OEM BEARING (TOP AS PICTURED IN DIAGRAM B). THIS NEEDS TO BE REMOVED TO ACCESS A FLAT SURFACE FOR PRESSING OUT THE OEM BEARING.
4. SUPPORT THE KNUCKLE AS SHOWN IN DIAGRAM A, AND PRESS OUT THE OEM BEARING.



**DIAGRAM B**  
(RHS PICTURED)

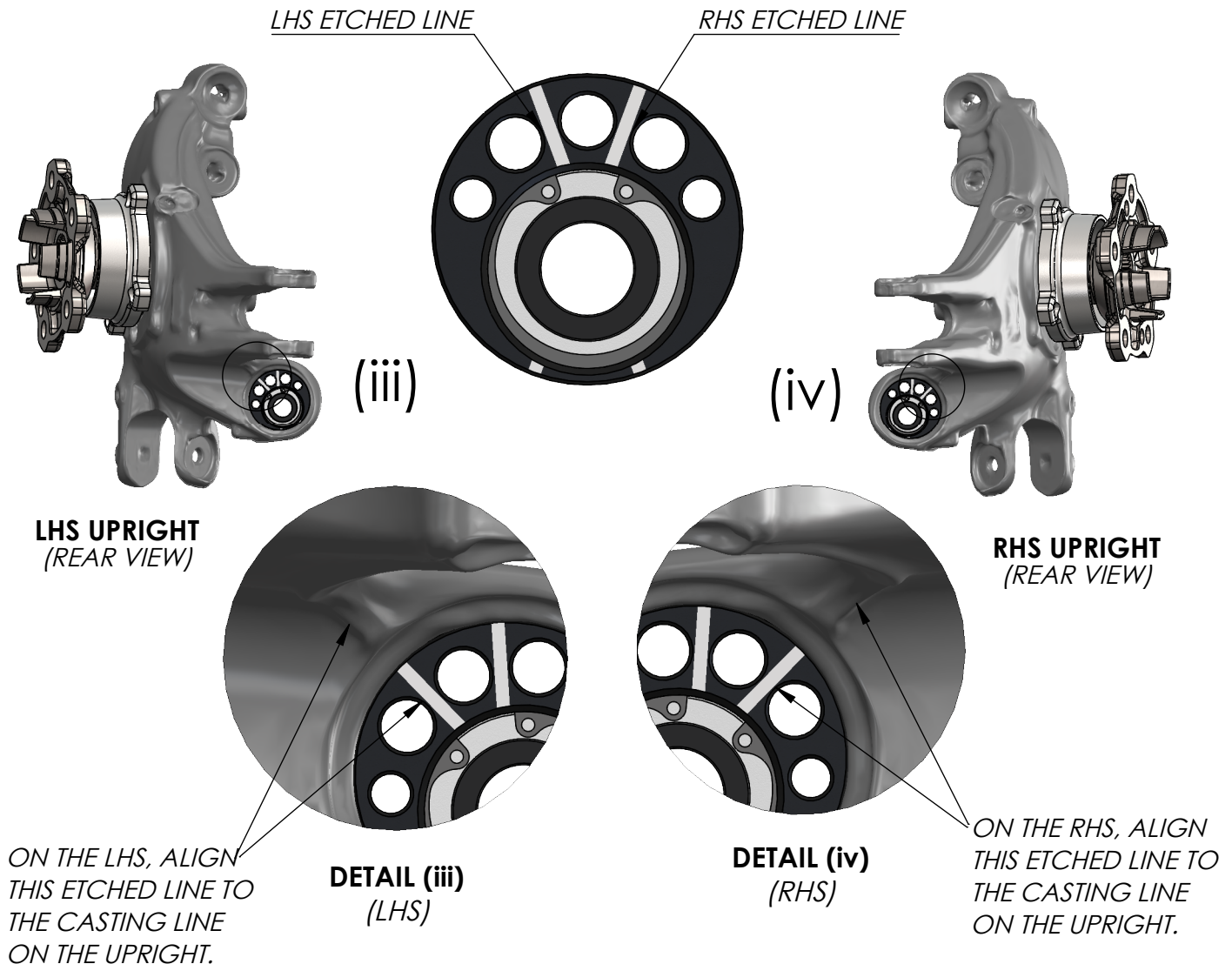
5. USE A GRINDER TO CLEARANCE THE UPRIGHT IN THE LOCATION HIGHLIGHTED IN DIAGRAM C. GRIND UNTIL THE THICKNESS FROM THE FLAT FACE ON THE OTHER SIDE MEASURES 28.5MM.



**DIAGRAM C**  
(RHS PICTURED)

# F8XX-RK BK

6. USING DIAGRAM D, ALIGN THE ETCHED LINE ON THE ECCENTRIC BEARING TO THE RAISED CASTING LINE ON THE UPRIGHT. THEN PRESS THE NEW BEARING INTO PLACE.



## DIAGRAM D

7. ONCE COMPLETE, REINSTALL THE UPRIGHT USING THE SPACERS PROVIDED.

WE RECOMMEND LOOSENING THE LOWER DAMPER MOUNTING BOLT BEFORE INSTALLING THE UPRIGHT TO THE LOWER TRAILING ARM. THE DAMPER BOLT MAY BE CLOSING UP THE ARM AND MAKING INSTALLATION DIFFICULT.

8. REASSEMBLE THE REST OF THE VEHICLE AND TORQUE TO OEM SPECIFICATIONS.
9. PERFORM A VEHICLE ALIGNMENT TO YOUR PREFERRED SPECIFICATIONS.