

370Z-RUAB

5. MOUNT THE UPPER A-ARM TO THE UPRIGHT AND TIGHTEN THE NUT TO 84,5Nm (62 lbf-ft)

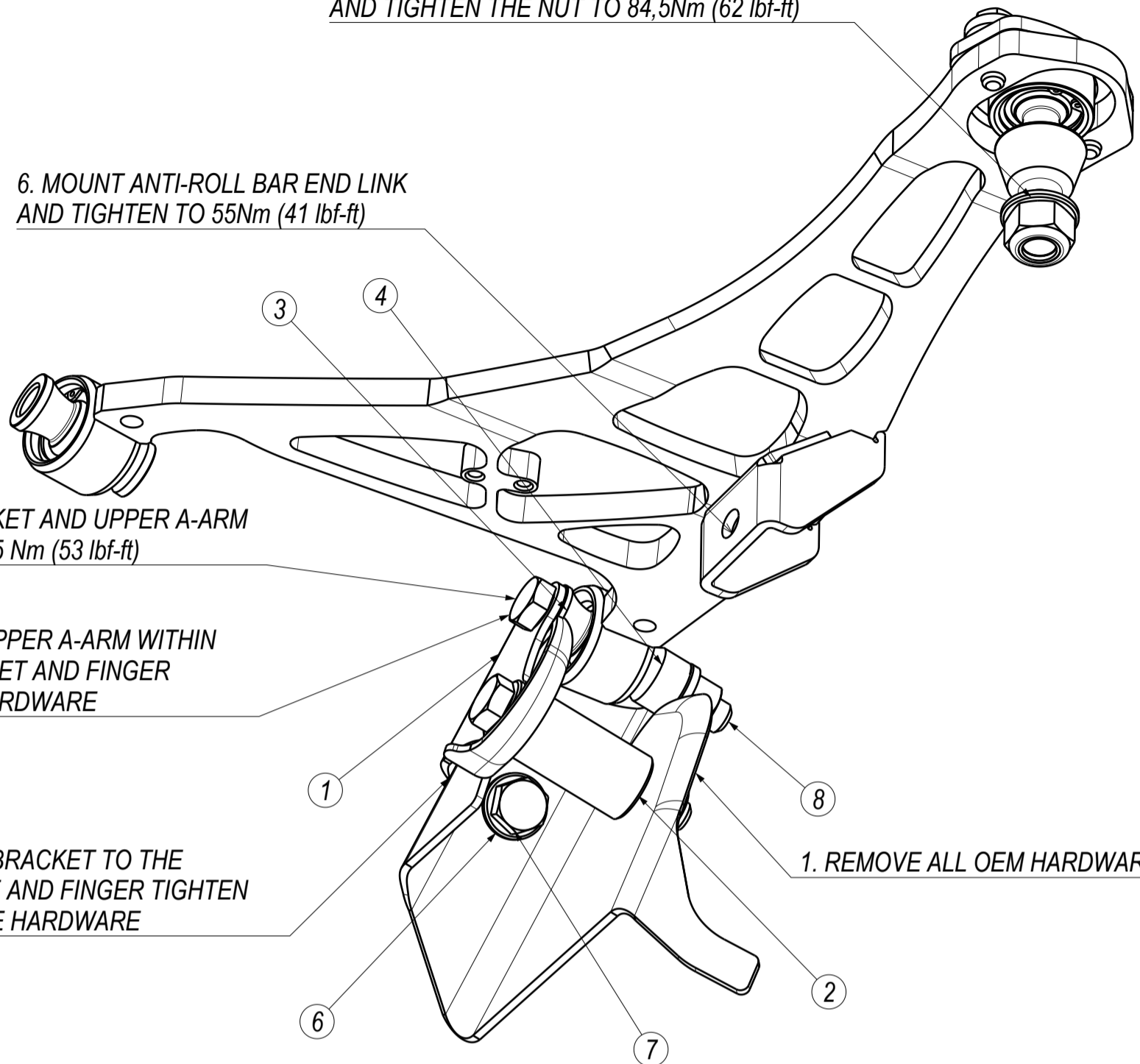
6. MOUNT ANTI-ROLL BAR END LINK AND TIGHTEN TO 55Nm (41 lbf-ft)

4. TIGHTEN BRACKET AND UPPER A-ARM BOLTS (4x) TO 72,5 Nm (53 lbf-ft)

3. MOUNT THE UPPER A-ARM WITHIN THE NEW BRACKET AND FINGER TIGHTEN THE HARDWARE

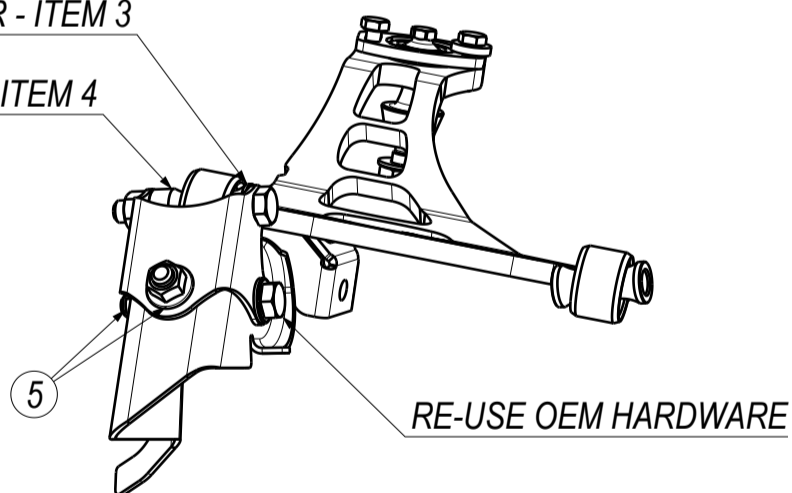
2. MOUNT BRACKET TO THE SUBFRAME AND FINGER TIGHTEN ALL OF THE HARDWARE

1. REMOVE ALL OEM HARDWARE

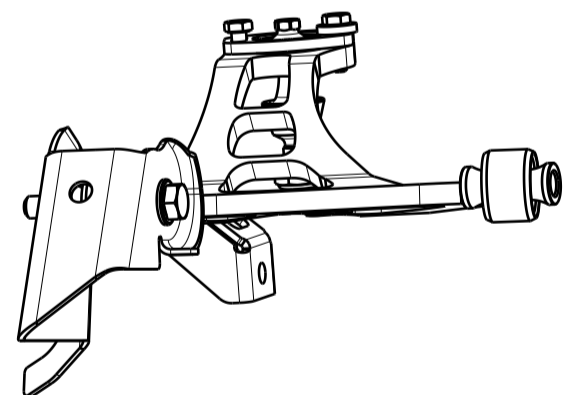


NEW SPACER - ITEM 3

NEW SPACER - ITEM 4



TOP A-ARM POSITION - WITH RELOCATION BRACKET



TOP A-ARM POSITION - OEM

IMPORTANT!

BRACKET IS DESIGNED TO BE COMPATIBLE WITH GKTECH REAR TOP A-ARM AND IS NOT COMPATIBLE WITH OEM ARM DUE TO CLEARANCE. OTHER ARMS MAY FIT WITH MODIFIED SPACERS

8	ISO 4014 BOLT M12x80 STEEL 10.9	1
7	ISO 4017 SCREW M12x25 STEEL 10.9	1
6	ISO 7089 WASHER 12x24 STEEL	1
5	ISO 4161 NUT M12x1.75 FLANGE 10.9	2
4	SPACER M12x19x65	1
3	SPACER - 12x45	1
2	SPACER 26x12,3x50	1
1	370Z RUCA RELOCATION BRACKET	1
PC NO	COMPONENT NAME	QTY