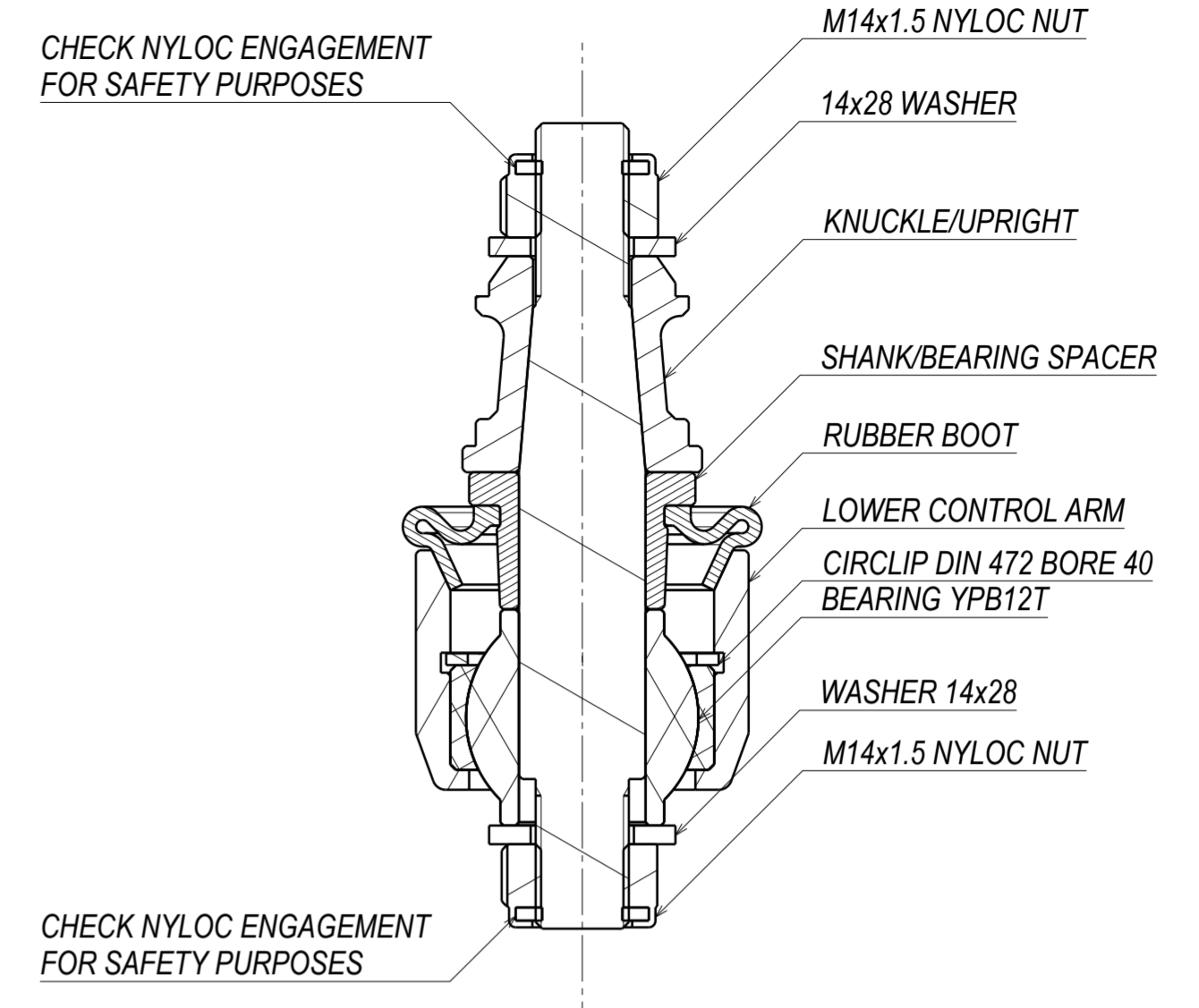
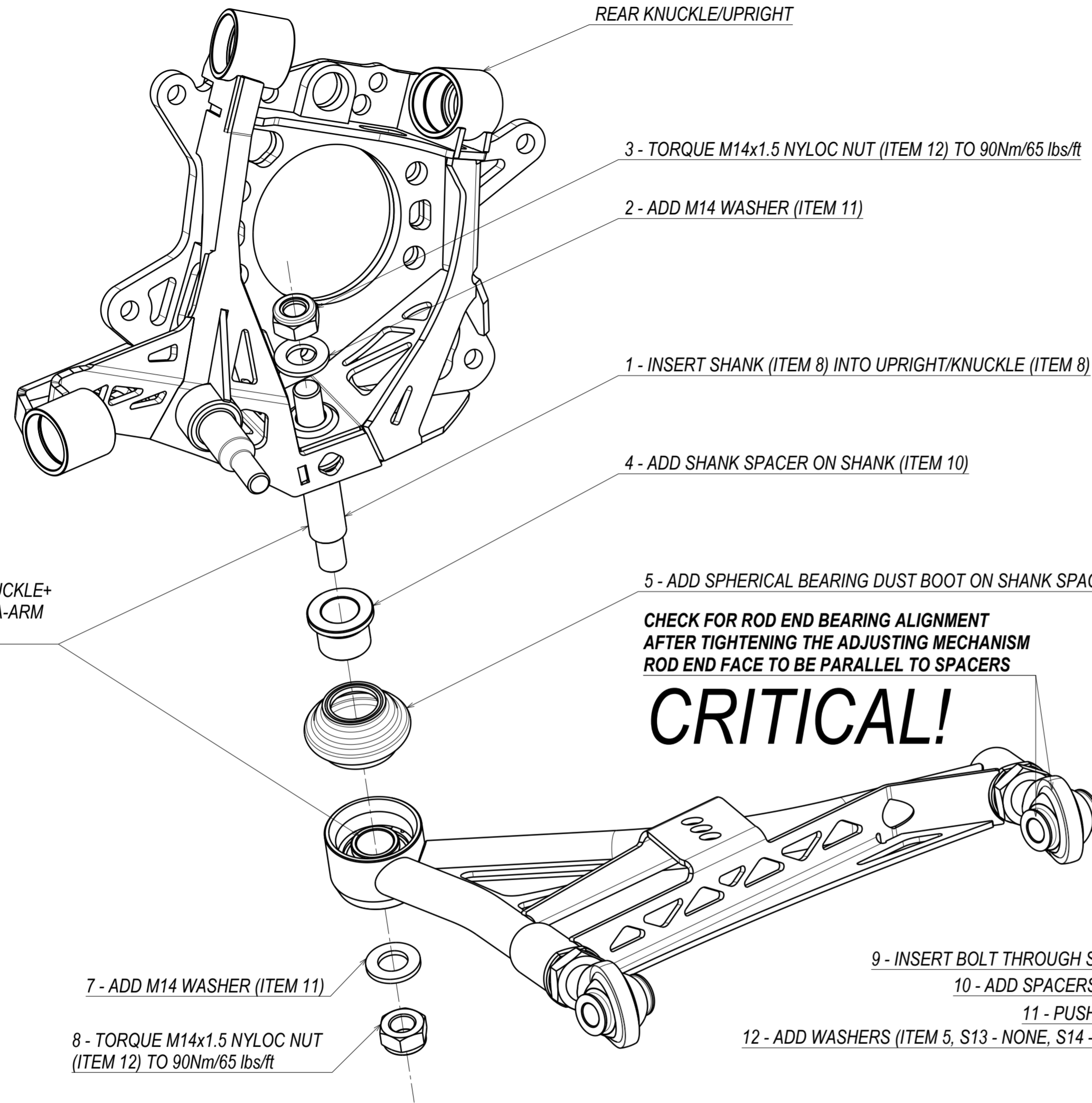


REAR-LCAX 2/2



6 - INSTALL UPRIGHT/KNUCKLE+ SHANK ASSEMBLY INTO A-ARM SPHERICAL BEARING

5 - ADD SPHERICAL BEARING DUST BOOT ON SHANK SPACER COLLAR (ITEM 9)

CRITICAL!
CHECK FOR ROD END BEARING ALIGNMENT AFTER TIGHTENING THE ADJUSTING MECHANISM ROD END FACE TO BE PARALLEL TO SPACERS

7 - ADD M14 WASHER (ITEM 11)

8 - TORQUE M14x1.5 NYLOC NUT (ITEM 12) TO 90Nm/65 lbs/ft

13 - 9 - INSERT BOLT THROUGH SUBFRAME MOUNTING BRACKET

14 - ADD SPACERS (ITEM 4), PUSH BOLT THROUGH

15 - PUSH BOLT THROUGH ROD END

16 - ADD WASHERS (ITEM 5, S13 - NONE, S14 - 2x), PUSH BOLT THROUGH

17 - TIGHTEN NUT M12 TO 77-98Nm/ 57-72 lbs/ft

20 - TIGHTEN JAM NUT 3/4-16 (ITEM 2) TO 190Nm/140 lbs/ft

9 - INSERT BOLT THROUGH SUBFRAME MOUNTING BRACKET

10 - ADD SPACERS (ITEM 4), PUSH BOLT THROUGH

11 - PUSH BOLT THROUGH ROD END

12 - ADD WASHERS (ITEM 5, S13 - NONE, S14 - 2x), PUSH BOLT THROUGH

18 - TIGHTEN NUT M12 TO 77-98Nm/ 57-72 lbs/ft

19 - TIGHTEN JAM NUT 3/4-16 (ITEM 2) TO 190Nm/140 lbs/ft

REAR SWAYBAR

21 - ADD SWAYBAR WASHER AND TOP BUSHING (IF OEM IS USED)

22 - TIGHTEN SWAYBAR NUT TO 9-12Nm/6,5-8,7 lbs/ft

ANTI-ROLL BAR HOLES CAN ALSO BE USED FOR CHASSIS TUNING. OUTWARDS POSITION INCREASES REAR STIFFNESS AND INWARDS POSITION REDUCES IT.

PC NO	COMPONENT NAME	QTY
13	QA1 PCML12T BOOT REV2	2
12	NYLON LOCKING NUT DIN 985-8 M14x1.5	8
11	WASHER DIN 125 M14	1
10	SHANK SPACER STD LENGTH	1
9	DUST BOOT - FRONT LCA	1
8	SHANK S14/S15 FRONT STD LENGTH	1
7	INTERNAL INVERTED CIRCLIP - 40MM	1
6	SPHERICAL BEARING YPB12-T	1
5	RLCA OFFSET WASHER 12x22x2.5	4
4	RLCA MISALIGNMENT SPACER	4
3	ROD END PCML12-TE	2
2	JAM NUT 3/4-16 UNF 3B (HEIGHT 10,7mm)	2
1	RLCA WELDED ASM L/H	1

